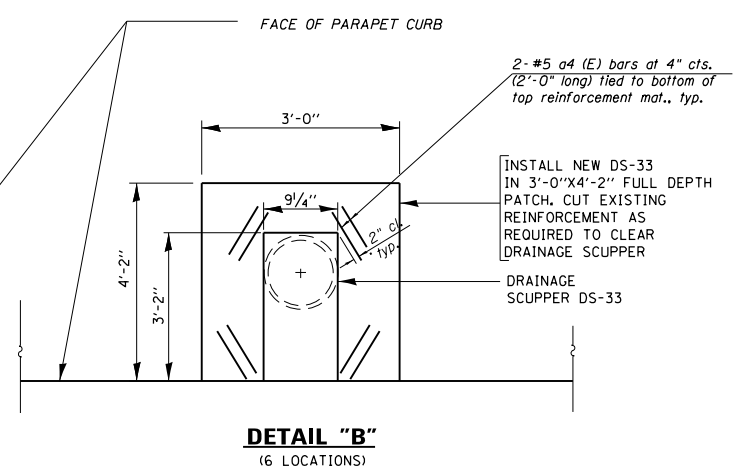
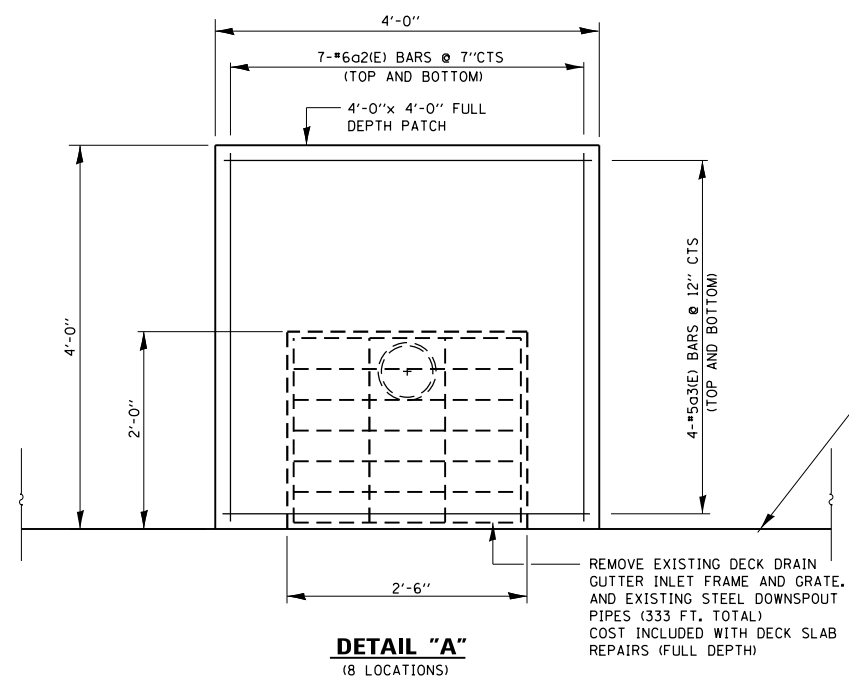


**DECK PLAN**  
**S.N. 016-0064**



- LEGEND:**
- PARTIAL DEPTH REPAIR
  - FULL DEPTH REPAIR

SEE BILL OF MATERIALS, SHEET 6

**NOTES:**  
EXISTING REINFORCEMENT BARS EXTENDING INTO THE REMOVAL AREA SHALL BE CLEANED, STRAIGHTENED AND INCORPORATED INTO THE NEW CONSTRUCTION. ANY REINFORCEMENT BARS THAT ARE DAMAGED DURING CONCRETE REMOVAL SHALL BE REPLACED WITH AN APPROVED BAR SPLICER OR ANCHORAGE SYSTEM. COST INCLUDED WITH CONCRETE REMOVAL.

FILE NAME =	USER NAME = dahhnr	DESIGNED - MVT	REVISED -	<b>STATE OF ILLINOIS DEPARTMENT OF TRANSPORTATION</b>	<b>I-57 OVER CAL-SAG CHANNEL BRIDGE DECK PATCHING S.N. 016-0064</b>	F.A.I. RTE.	SECTION	COUNTY	TOTAL SHEETS	SHEET NO.	
Default	Plot Scale = 100.0000' / in.	CHECKED RAD	REVISED -			57	2013-025-I	COOK	23	8	
	PLOT DATE = 9/9/2013	DATE 8-30-13	REVISED -			CONTRACT NO. 60W60					
						ILLINOIS FED. AID PROJECT					