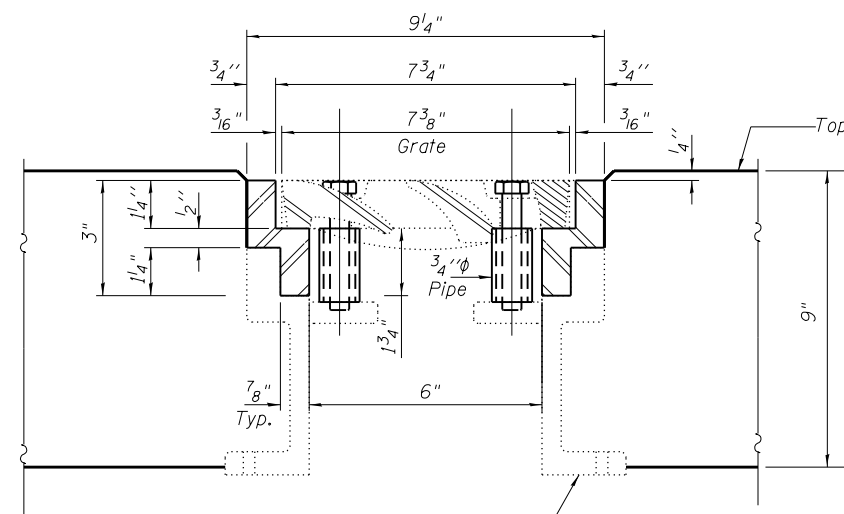
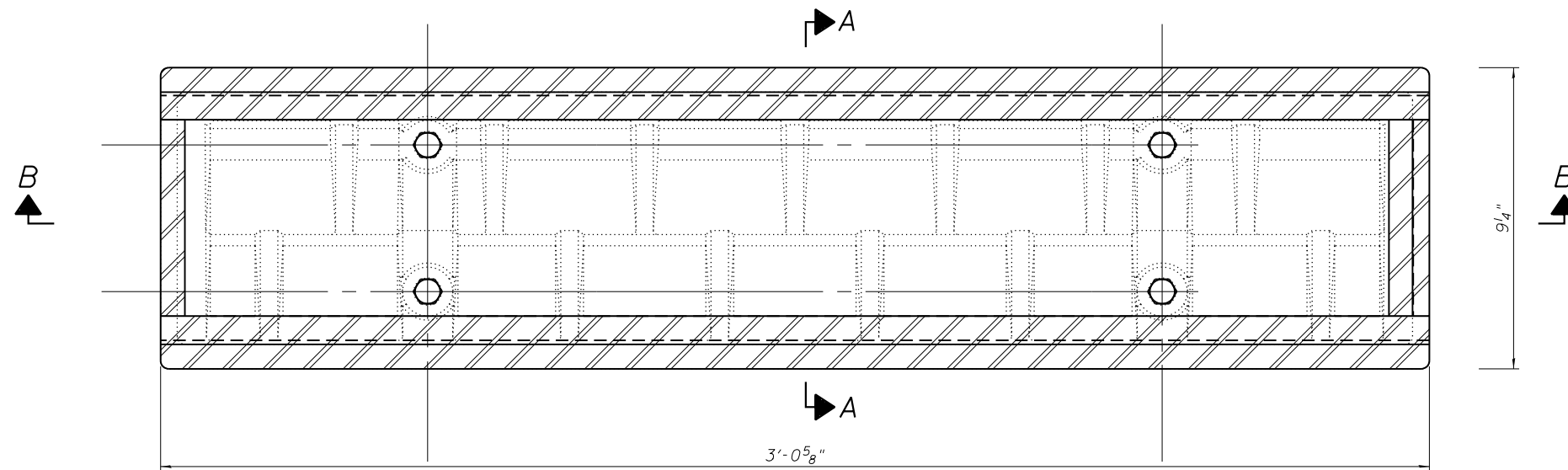


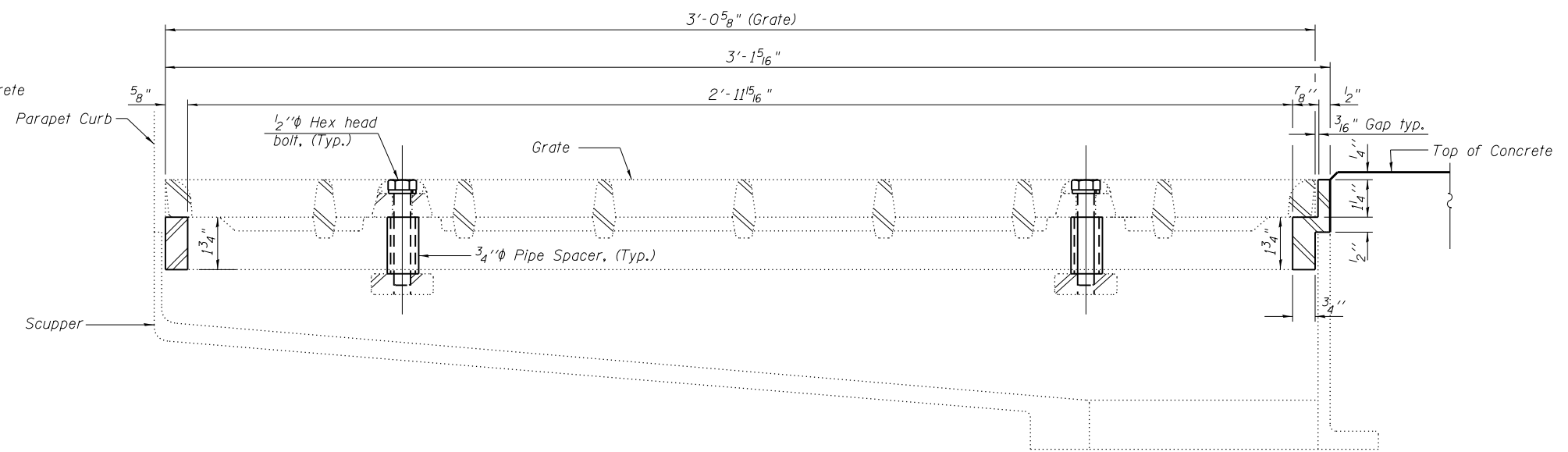
NOTES

See sheets 5 through 8 of 12 for scupper locations.
 All structural steel shall be AASHTO M270 Grade 36. The adjusting scupper ring and $\frac{3}{4}$ " ϕ pipe sleeve spacers shall be galvanized.
 Bolts shall be $\frac{1}{2}$ " ϕ AASHTO M164 Type 1, mechanically galvanized.
 Plan dimensions and details relative to existing plans are subject to nominal construction variations. The Contractor shall field verify existing dimensions and details affecting new construction and make necessary approved adjustments prior to construction or ordering of materials. Such variations shall not be cause for additional compensation for a change in scope of the work, however, the Contractor will be paid for the quantity actually furnished based at the unit price bid for the work.
 Shop plans for proposed adjusting scupper ring shall be submitted for approval prior to fabrication.
 Adjusting scupper rings is included in the cost per unit each of Drainage Scupper, DS-33



Scupper, See sheet 11 of 12 for Drainage Scupper, DS-33 information

SECTION A-A



SECTION B-B

- Adjusting Scupper Ring
- Scupper DS-33, see Sheet 11 of 12

FILE NAME =	USER NAME = dahhnr	DESIGNED -	REVISED -
et:\pw_work\pwork\dahhnr\0101671\016-0064.dgn		DRAWN -	REVISED -
Default	PLOT SCALE = 100.0000' / in.	CHECKED -	REVISED -
	PLOT DATE = 9/9/2013	DATE -	REVISED -

**STATE OF ILLINOIS
 DEPARTMENT OF TRANSPORTATION**

**I-57 OVER CAL-SAG CHANNEL
 ADJUSTING DRAINAGE SCUPPER RING DETAILS
 S.N. 016-0064 AND S.N. 016-0065**

SCALE: SHEET 12 OF 12 SHEETS STA. TO STA.

F.A.I. RTE.	SECTION	COUNTY	TOTAL SHEETS	SHEET NO.
57	2013-025-1	COOK	23	15
CONTRACT NO. 60W60			ILLINOIS FED. AID PROJECT	