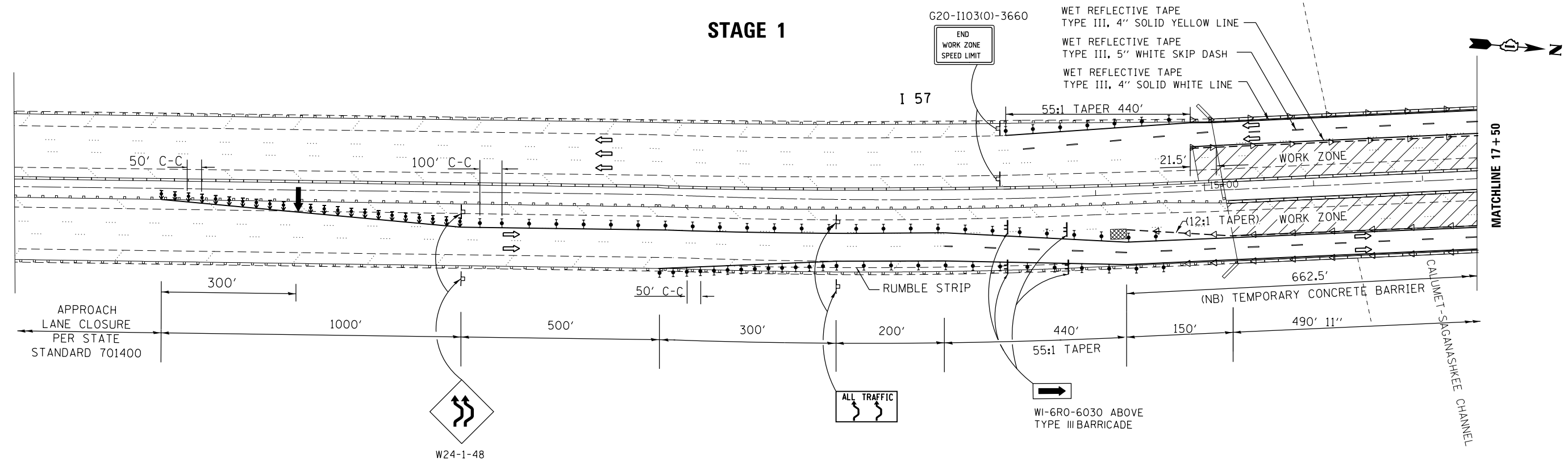


STAGE 1

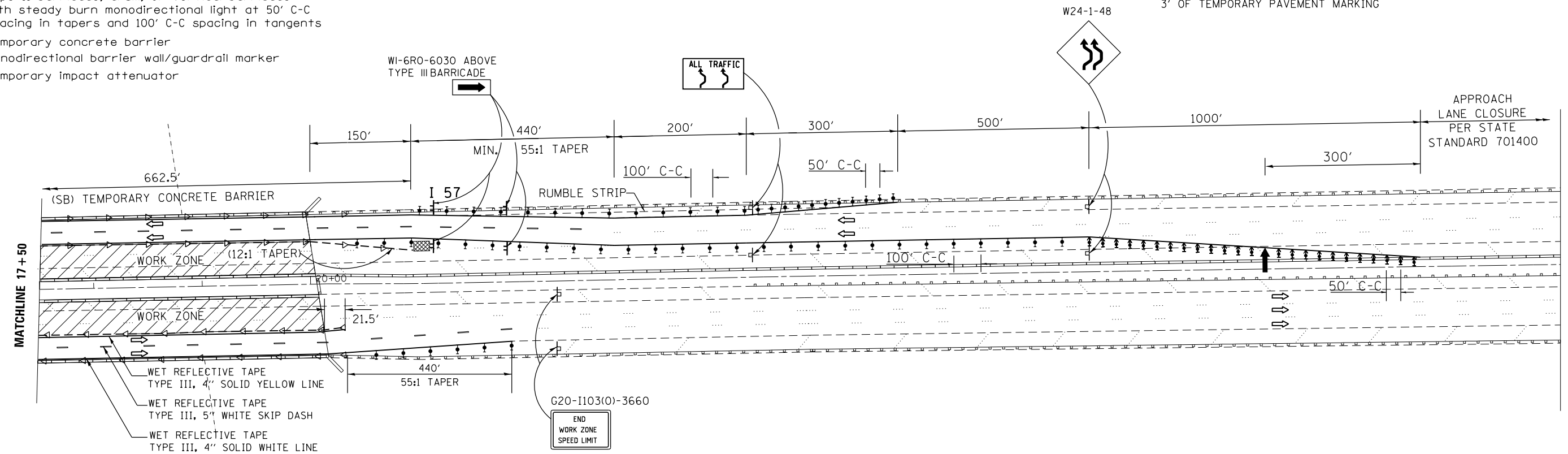


SYMBOLS

- Arrow board
- Work area
- Sign
- Direction indicator barricade with steady burn monodirectional light at 50' C-C spacing
- Type II barricade, drum, or vertical barricade with steady burn monodirectional light at 50' C-C spacing in tapers and 100' C-C spacing in tangents
- Temporary concrete barrier
- Monodirectional barrier wall/guardrail marker
- Temporary impact attenuator

NOTES:

- ① EXISTING CONFLICTING PAVEMENT MARKING LINES SHALL BE REMOVED
- ② ALL SIGNS SHALL BE POST MOUNTED UNLESS THE SIGNS ARE LOCATED ON THE PAVEMENT OR DEFINE A MOVING OR INTERMITTENT OPERATION
- ③ REMOVE ALL PERMANENT PAVEMENT MARKING WITHIN 3' OF TEMPORARY PAVEMENT MARKING



FILE NAME =	USER NAME = hardnettr	DESIGNED -	REVISED -
ei:\pw_work\puidot\hardnettr\d0345314\034313-sh1-plan.dgn		DRAWN -	REVISED -
Default	PLOT SCALE = 100.0000' / in.	CHECKED -	REVISED -
	PLOT DATE = 8/30/2013	DATE -	REVISED -

**STATE OF ILLINOIS
DEPARTMENT OF TRANSPORTATION**

STAGING PLAN I-57 OVER CAL-SAG CHANNEL			
SCALE:	SHEET 1	OF 2 SHEETS	STA. TO STA.

F.A.I. RTE.	SECTION	COUNTY	TOTAL SHEETS	SHEET NO.
57	2013-025-I	COOK	23	17
CONTRACT NO. 60W60			ILLINOIS FED. AID PROJECT	