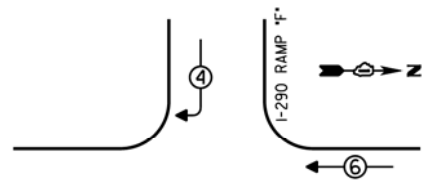


CONTROLLER SEQUENCE



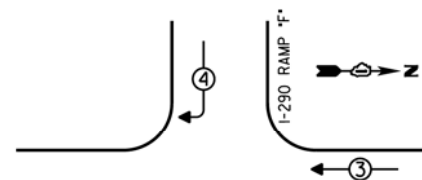
US12, US20, US45 (MANNHEIM ROAD)

PHASE DESIGNATION DIAGRAM

LEGEND

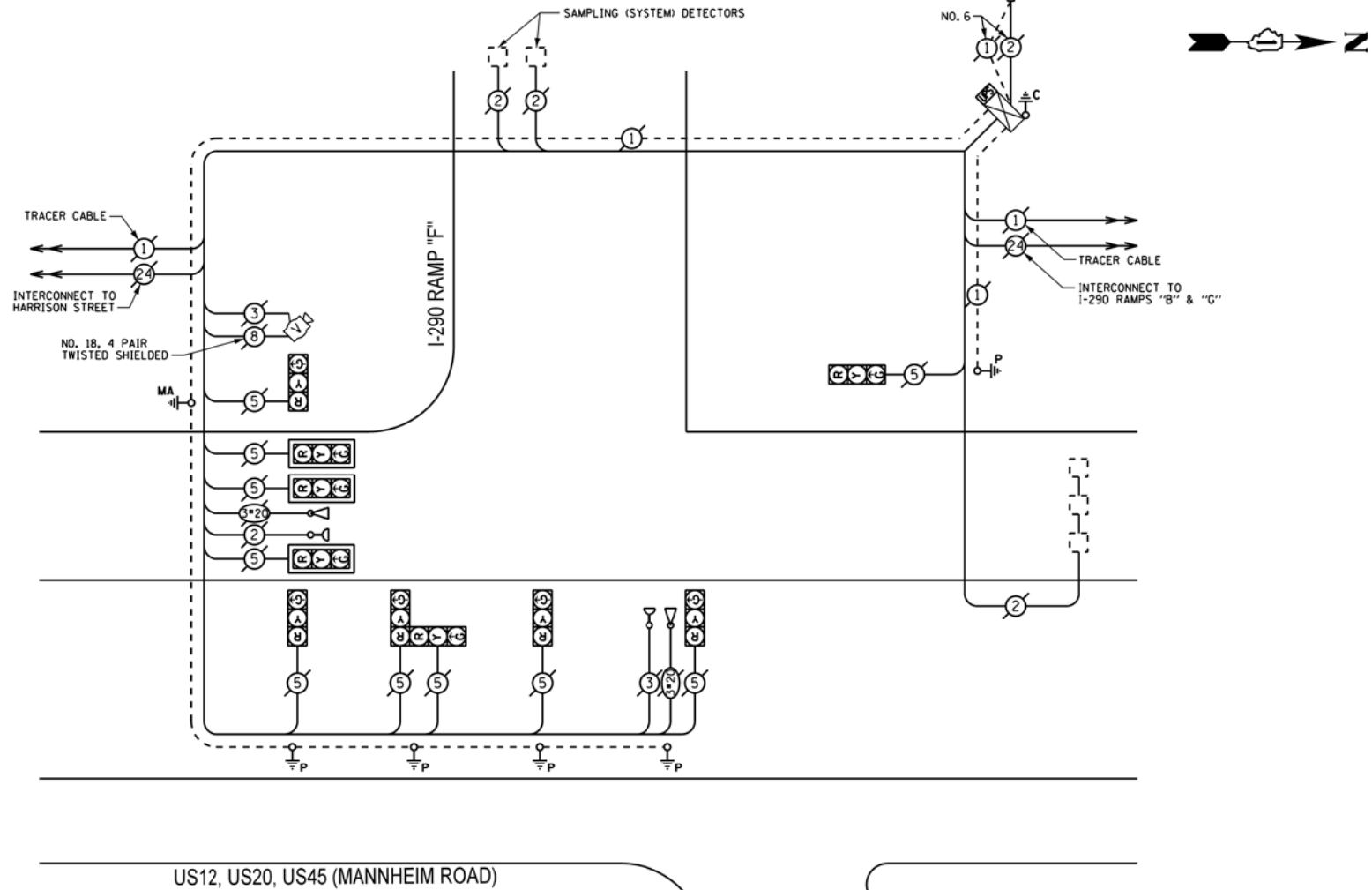
- SINGLE ENTRY PHASE
- DUAL ENTRY PHASE
- OVERLAP
- PEDESTRIAN PHASE
- NUMBER REFERS TO ASSOCIATED PHASE

EMERGENCY VEHICLE PREEMPTION SEQUENCE



US12, US20, US45 (MANNHEIM ROAD)

EMERGENCY VEHICLE PREEMPTORS		
EMERGENCY VEHICLE PREEMPTOR	3	4
MOVEMENT	↔	↓



CABLE PLAN

THE TRAFFIC SIGNAL CONTROL EQUIPMENT FOR THIS PROJECT SHALL BE "ECONOLITE".

I.D.O.T. TRAFFIC SIGNAL INSTALLATION ELECTRICAL SERVICE REQUIREMENTS					TOTAL WATTAGE
TYPE	NO. OF LAMPS	INCAND	LED	% OPERATIONS	
SIGNAL (RED)	10		17	0.50	85.00
(YELLOW)	10		25	0.25	62.50
(GREEN)	10		15	0.25	37.50
ARROW			12	0.10	
PED. SIGNAL			25	1.00	
CONTROLLER	1		100	1.00	100.00
ILLUM. SIGN			25	0.05	
LUMINAIRE		250		0.50	
VIDEO SYSTEM	1	150		1.00	150.00
FLASHER			25	0.50	
ENERGY COSTS TO:					TOTAL = 435.00
VILLAGE OF HILLSIDE 425 HILLSIDE AVENUE HILLSIDE, ILLINOIS 60162					
ENERGY SUPPLY - CONTACT: JOE STACHO					
PHONE: (630) 424-5704					
COMPANY: COMED					

SCHEDULE OF QUANTITIES

QUAN.	UNIT	ITEM
1	EACH	MAINTENANCE OF EXISTING TRAFFIC SIGNAL INSTALLATION
1	EACH	MODIFY EXISTING CONTROLLER CABINET
1	EACH	UNINTERRUPTIBLE POWER SUPPLY, SPECIAL

FILE NAME =	USER NAME = #USER#	DESIGNED - JAM	REVISED -	<p align="center">STATE OF ILLINOIS DEPARTMENT OF TRANSPORTATION</p> <p align="center">SCHEDULE OF QUANTITIES, CABLE PLAN, PHASE DESIGNATION DIAGRAM, AND EMERGENCY VEHICLE PREEMPTION SEQUENCE, US12, US20, US45, (MANNHEIM ROAD) AT I-290 RAMP "F"</p>	F.A. RTE.	SECTION	COUNTY	TOTAL SHEETS	SHEET NO.
#FILE#	PLOT SCALE = #SCALE#	DRAWN - JAM	REVISED -		VAR	2013-035-TS	COOK	87	35
#MODELNAME#	PLOT DATE = #DATE#	CHECKED - LMM	REVISED -		CONTRACT NO. 60W72				
		DATE - 08-23-13	REVISED -		ILLINOIS FED. AID PROJECT				