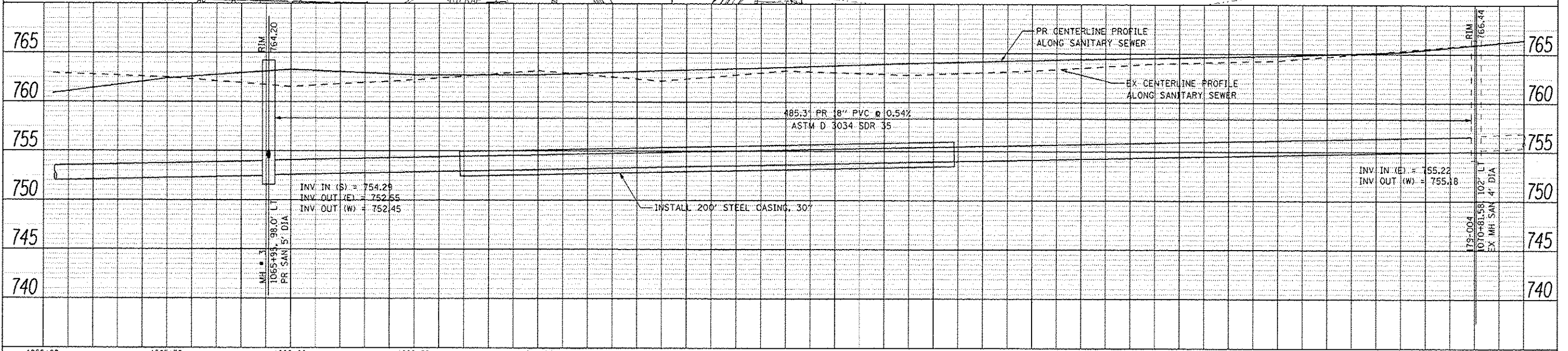
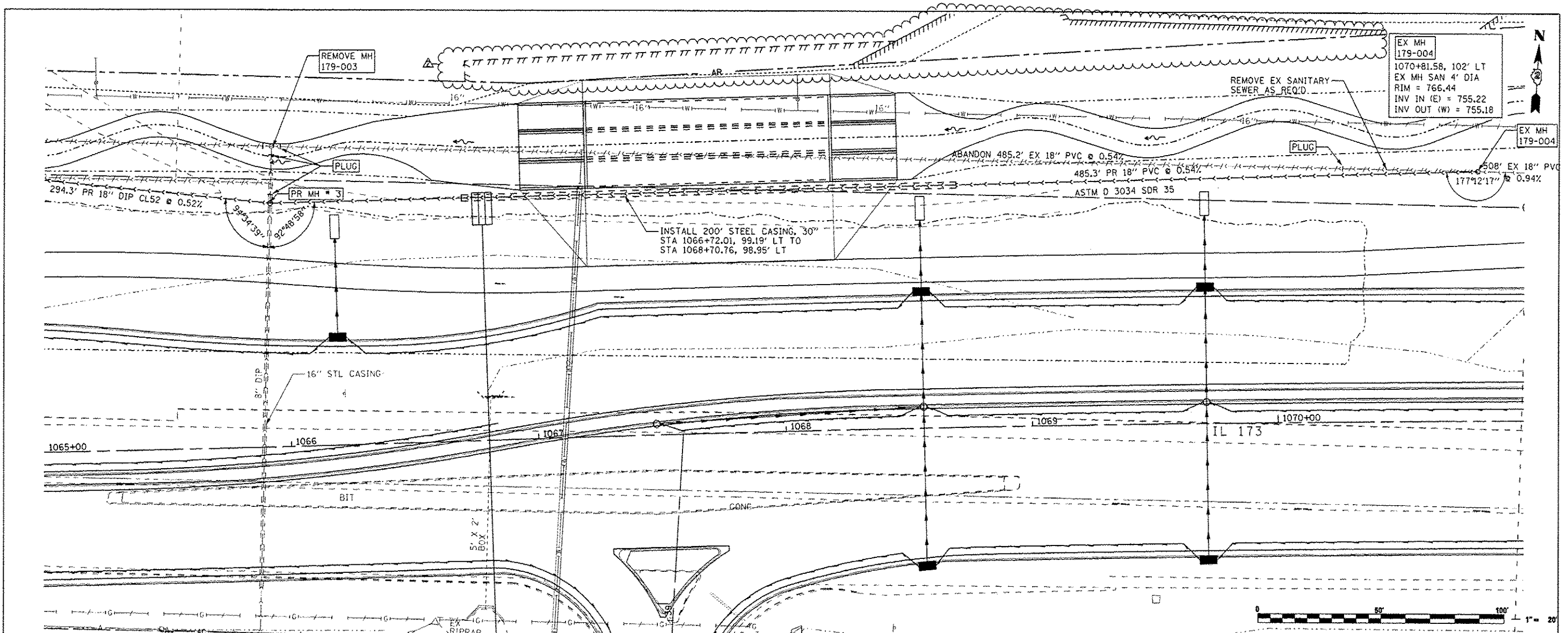


DATE	
BY	
REVISION	
NO. 1	AS SHOWN
NO. 2	AS SHOWN
NO. 3	AS SHOWN
NO. 4	AS SHOWN
NO. 5	AS SHOWN
NO. 6	AS SHOWN
NO. 7	AS SHOWN
NO. 8	AS SHOWN
NO. 9	AS SHOWN
NO. 10	AS SHOWN

DATE	
BY	
REVISION	
NO. 1	AS SHOWN
NO. 2	AS SHOWN
NO. 3	AS SHOWN
NO. 4	AS SHOWN
NO. 5	AS SHOWN
NO. 6	AS SHOWN
NO. 7	AS SHOWN
NO. 8	AS SHOWN
NO. 9	AS SHOWN
NO. 10	AS SHOWN



FILE NAME: ... \CAD00 SHEETS\2007935AN\LN02.dwg	USER NAME: Elgin IIB	DESIGNED: MW	REVISED:	<b>STATE OF ILLINOIS DEPARTMENT OF TRANSPORTATION</b>	<b>SANITARY SEWER RELOCATION PLANS IL 173 FROM ALPINE ROAD TO I-90</b>	F.A.P. RTE. 303	SECTION 129R	COUNTY WINNEBAGO	TOTAL SHEETS 968	SHEET NO. 482	CONTRACT NO. 64988		
THE UPCHURCH GROUP, INC.	PLOT SCALE: 48,000R / 1 IN.	CHECKED: MJS	REVISED:			SCALE: 1"=20'	SHEET NO. OF SHEETS	STA. 1065+00 TO STA. 1071+00	ILLINOIS FEQ. AID PROJECT				
	PLOT DATE: 4/13/2013 9:40:11 AM	DATE: APRIL 30, 2013	REVISED:										
REV. 9-21-13													