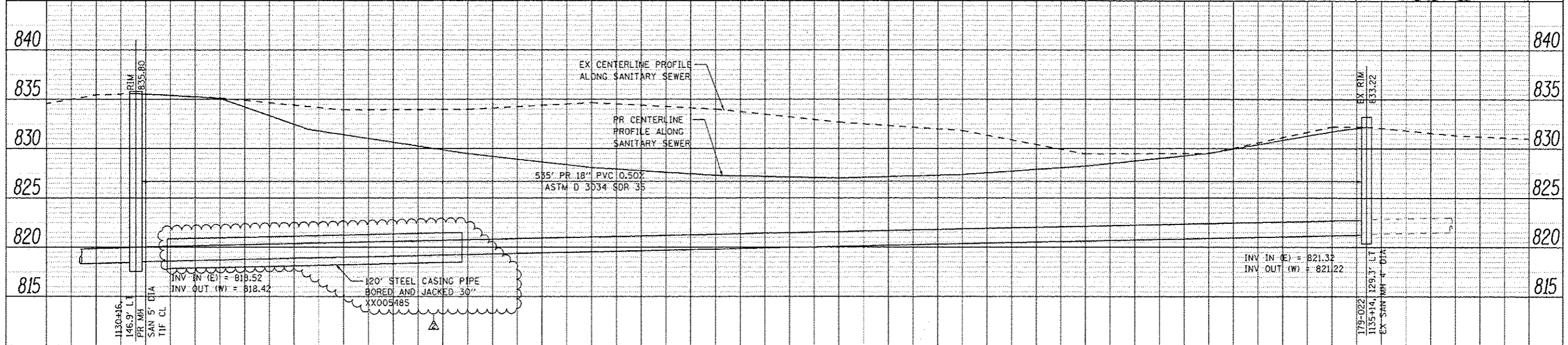
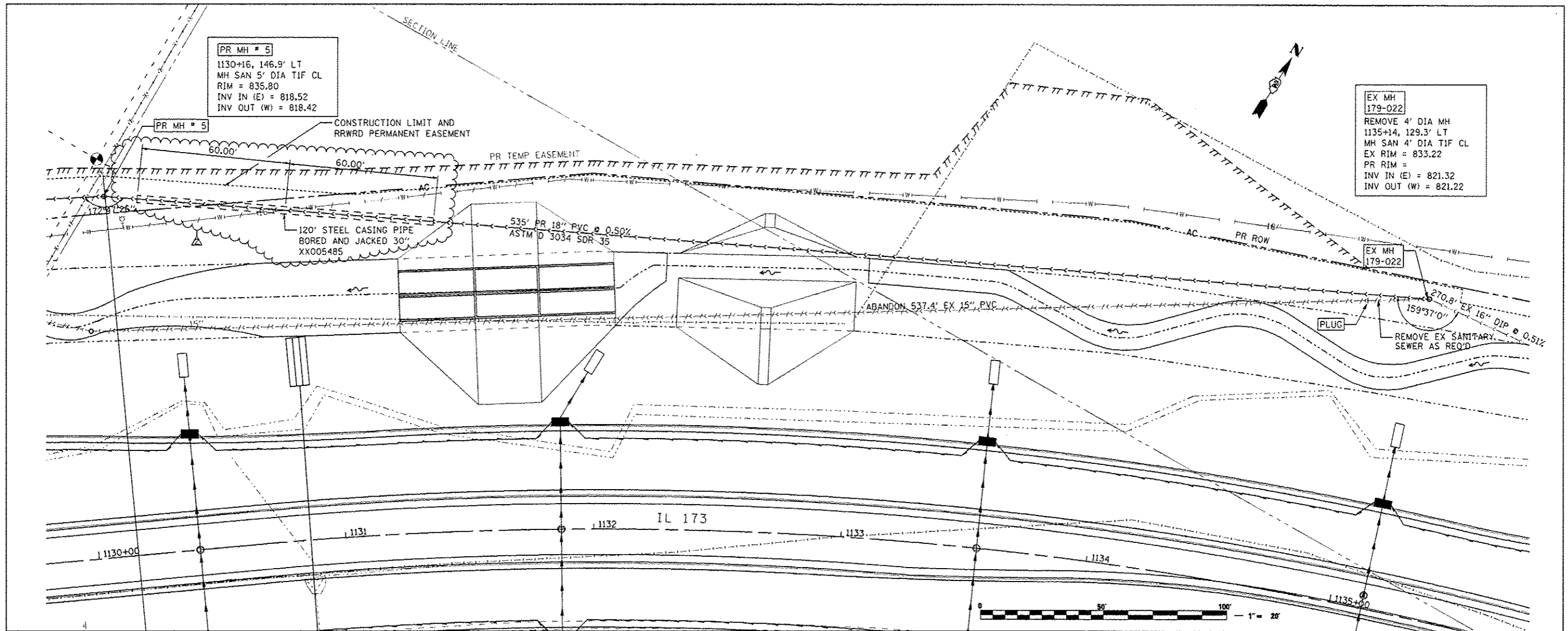


DATE	
BY	
PLAN	
NO.	
NO.	
NO.	
NO.	
NO.	
NO.	
NO.	

DATE	
BY	
PROFILE	
NO.	
NO.	
NO.	
NO.	
NO.	
NO.	
NO.	



FILE NAME ...D00 SHEETS\2007\935AN\LN06.dgn	USER NAME Elgin 110	DESIGNED - MW	REVISED -	<b>STATE OF ILLINOIS</b> <b>DEPARTMENT OF TRANSPORTATION</b>	<b>SANITARY SEWER RELOCATION PLANS</b> <b>IL 173 FROM ALPINE ROAD TO I-90</b>	F.A.P. RTE. 303	SECTION 129R	COUNTY WINNEBAGO	TOTAL SHEETS 968	SHEET NO. 486		
THE UPCHURCH GROUP, INC.	PLOT SCALE = 48.0000' / IN.	CHECKED - MJS	REVISED -			SCALE:	SHEET NO. OF SHEETS	STA. 1131+00 TO STA. 1136+00	CONTRACT NO. 64988			
	PLOT DATE = 10/8/2013 10:07:50 AM	DATE = APRIL 30, 2013	REVISED -			[ILLINOIS] FED. AID PROJECT						