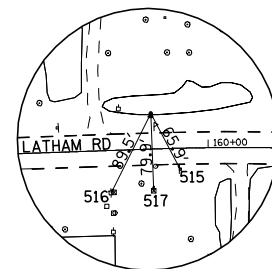


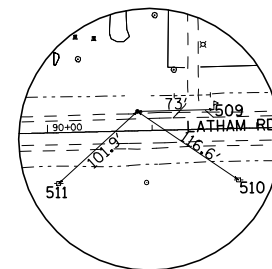
EXISTING HORIZONTAL & VERTICAL CONTROL

REFERENCE TIES				
POINT	CHAIN	STATION	OFFSET	DESCRIPTION
503	LATHAMRD	69+62.0815	62.1509' RT	POWER POLE WITH LIGHT, SHINER
504	LATHAMRD	67+32.1326	80.0459' LT	POWER POLE WITH LIGHT, SHINER
505	LATHAMRD	65+75.5002	66.6944' RT	POWER POLE WITH LIGHT, SHINER
509	LATHAMRD	91+59.3948	18.5664' LT	MAILBOX, FACE
510	LATHAMRD	91+81.2889	49.1536' RT	POWER POLE, SHINER
511	LATHAMRD	90+09.5726	48.4639' RT	POWER POLE WITH TRANSFORMER, SHINER
512	LATHAMRD	108+74.1546	40.7485' RT	POWER POLE, SHINER
513	LATHAMRD	109+93.5653	57.3054' LT	POWER POLE, SHINER
514	LATHAMRD	109+82.1626	40.1412' RT	POWER POLE, SHINER
515	LATHAMRD	159+72.8692	20.3077' RT	SIGN POLE, SHINER
516	LATHAMRD	159+05.7778	40.5765' RT	POWER POLE, SHINER
517	LATHAMRD	159+46.5304	39.8934' RT	R.O.W MARKER, TOP
533	IL173	3+93.4253	69.4792' RT	POWER POLE WITH TRANSFORMER, SHINER
535	IL173	4+62.8963	83.2606' RT	TRAFFIC SIGNAL CONTROLLER, CENTER
536	IL173	8+26.0240	126.1218' RT	POWER POLE WITH TRANSFORMER, SHINER
537	IL173	9+47.6756	94.0985' RT	POWER POLE, SHINER
538	IL173	8+00.9842	36.2353' RT	GUARDPOST, SHINER
539	IL173	42+98.6344	36.8836' RT	POWER POLE, SHINER
540	IL173	44+72.0791	37.8117' RT	POWER POLE, SHINER
541	IL173	46+47.4113	39.8445' RT	POWER POLE, SHINER
549	IL173	98+16.9495	47.7017' RT	POWER POLE, SHINER
550	IL173	97+78.2669	39.9628' LT	36" TREE DECIDUOUS, SHINER
551	IL173	97+55.3358	37.0266' LT	20" TREE DECIDUOUS, SHINER
554	IL173	113+04.7150	41.0611' RT	FENCE POST, SHINER
556	IL173	112+29.5718	41.0856' RT	POWER POLE, SHINER
557	IL173	112+99.4774	77.7608' LT	36" TREE DECIDUOUS, SHINER
558	IL173	113+99.0673	111.5623' LT	FENCE CORNER, SHINER
559	IL173	135+97.2496	43.3656' LT	POWER POLE, SHINER
560	IL173	135+96.3979	30.1079' RT	POWER POLE, SHINER
561	IL173	134+61.7867	44.0796' RT	POWER POLE, SHINER
562	IL173	140+39.1825	37.3239' LT	POWER POLE, SHINER
563	IL173	141+66.5256	39.5068' LT	POWER POLE, SHINER
564	IL173	142+04.8738	35.7736' RT	30" TREE DECIDUOUS, SHINER
565	IL173	160+27.6638	37.9120' LT	POWER POLE, SHINER
566	IL173	158+48.1349	37.6238' LT	POWER POLE, SHINER
567	IL173	158+67.7178	72.5173' RT	18" TREE EVERGREEN, SHINER
568	IL173	160+28.3788	37.7371' LT	POWER POLE, SHINER
569	IL173	162+01.7953	36.6403' LT	POWER POLE, SHINER
574	IL173	196+18.3465	27.1528' RT	POWER POLE, SHINER
576	IL173	194+48.6009	38.2704' LT	POWER POLE, SHINER
577	IL173	193+74.6078	18.4204' RT	PIER, CHISELED SQUARE

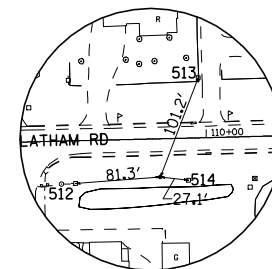
HORIZONTAL CONTROL POINTS							
POINT	NORTH	EAST	ELEVATION	CHAIN	STATION	OFFSET	DESCRIPTION
101	2079002.7630	2599987.5520	743.7430	LATHAMRD	159+46.3114	39.9684' LT	REFERENCE CORNER, PIN
90270	2078684.3270	2593136.3620	777.6750	LATHAMRD	90+86.3890	18.5411' LT	GPS CONTROL POINT, PIN
90271	2078674.4270	2595006.0440	753.1400	LATHAMRD	109+55.2900	36.3957' RT	GPS CONTROL POINT, PIN
AH3058	2078587.8610	2590827.1210	798.0410	LATHAMRD	67+75.3674	50.0269' RT	GPS CONTROL POINT, D2-NETWORK MONUMENT
1001	2077857.0840	2602500.2480	732.2980	IL173	4+72.9077	66.7457' RT	GPS CONTROL POINT PERMANENT SURVEY MARKER
90243	2078022.3300	2611836.6890	803.2070	IL173	98+13.7208	20.2461' RT	GPS CONTROL POINT, PIN
90246	2078302.6180	2613360.2100	816.1370	IL173	113+78.6085	35.8702' LT	GPS CONTROL POINT, PIN
90273	2077888.8510	2606466.4640	750.1020	IL173	44+42.0620	28.8902' LT	GPS CONTROL POINT, PIN
90274	2079670.3060	2621222.6490	898.9320	IL173	195+88.1427	23.4415' LT	GPS CONTROL POINT, PIN
92414	2079466.3690	2615211.6620	836.8390	IL173	135+75.3303	25.9679' LT	GPS CONTROL POINT, PIN
AH3045	2079518.1920	2617717.4890	879.8160	IL173	160+80.3683	45.8697' RT	GPS CONTROL POINT, D2-NETWORK MONUMENT
AH3046	2079554.6260	2615768.6170	843.8600	IL173	41+32.8998	36.5690' LT	GPS CONTROL POINT, D2-NETWORK MONUMENT



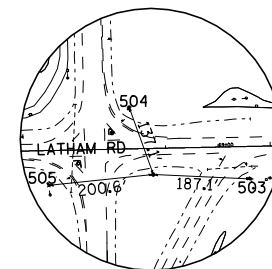
HORIZONTAL CONTROL POINT No. 101



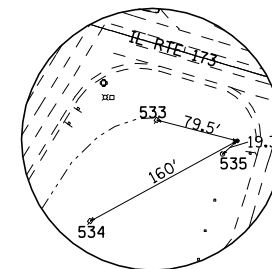
HORIZONTAL CONTROL POINT No. 90270



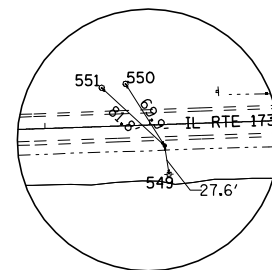
HORIZONTAL CONTROL POINT No. 90271



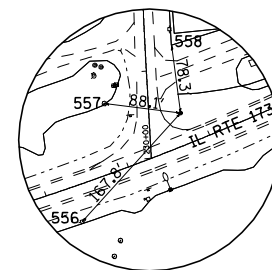
HORIZONTAL CONTROL POINT No. AH3058



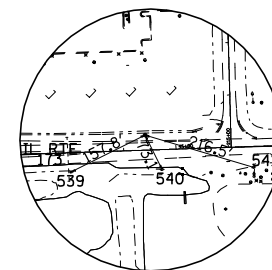
HORIZONTAL CONTROL POINT No. 1001



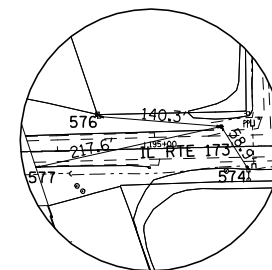
HORIZONTAL CONTROL POINT No. 90243



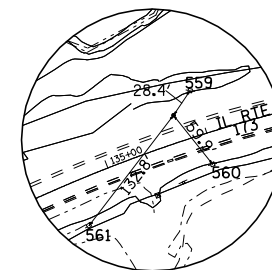
HORIZONTAL CONTROL POINT No. 90246



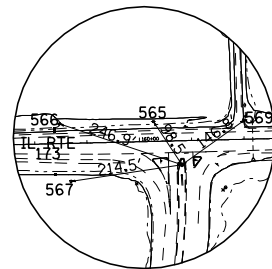
HORIZONTAL CONTROL POINT No. 90273



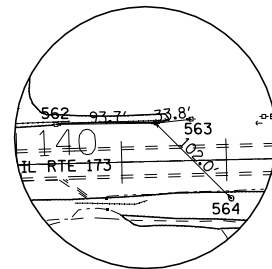
HORIZONTAL CONTROL POINT No. 90274



HORIZONTAL CONTROL POINT No. 92414



HORIZONTAL CONTROL POINT No. AH3045



HORIZONTAL CONTROL POINT No. AH3046

FILE NAME =	USER NAME = Elgin 110	DESIGNED -	REVISED -
...\\CADD\CADD SHEETS\05202hvc.dgn		DRAWN -	REVISED -
	PLOT SCALE = 2200.0000' / IN.	CHECKED -	REVISED -
	PLOT DATE = 5/2/2013	DATE -	REVISED -

**STATE OF ILLINOIS
DEPARTMENT OF TRANSPORTATION**

EXISTING HORIZONTAL & VERTICAL CONTROL

SCALE: SHEET OF SHEETS STA. TO STA.

F.A.P. RTE.	SECTION	COUNTY	TOTAL SHEETS	SHEET NO.
303	129R	WINNEBAGO	968	125
			CONTRACT NO. 64988	
ILLINOIS FED. AID PROJECT				