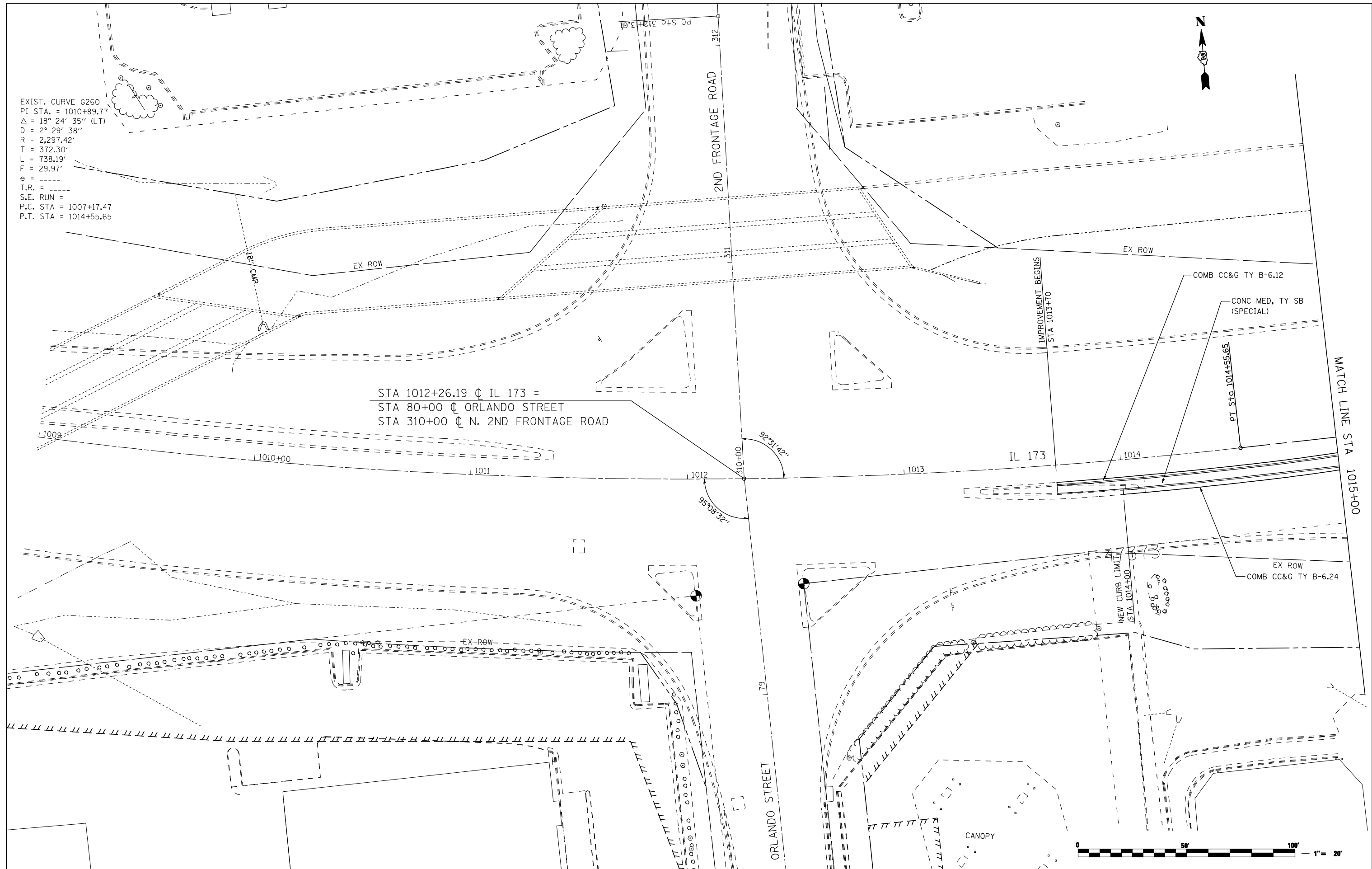


EXIST. CURVE G260  
 PI STA. = 1010+89.77  
 $\Delta = 18^\circ 24' 35''$  (LT)  
 $D = 2^\circ 29' 38''$   
 $R = 2,297.42'$   
 $T = 372.30'$   
 $L = 738.19'$   
 $E = 29.97'$   
 $e =$   
 T.R. =  
 S.E. RUN =  
 P.C. STA = 1007+17.47  
 P.T. STA = 1014+55.65



STA 1012+26.19  $\phi$  IL 173 =  
 STA 80+00  $\phi$  ORLANDO STREET  
 STA 310+00  $\phi$  N. 2ND FRONTAGE ROAD

FILE NAME =  
 ... \CADD SHEETS\Z00793PLN01.dgn  
**THE UPCHURCH GROUP, INC.**

USER NAME = Elgin 110  
 PLOT SCALE = 40.0000' / IN.  
 PLOT DATE = 5/7/2013 11:38:04 AM

DESIGNED - MJS  
 DRAWN - RMH  
 CHECKED - RLH  
 DATE - APRIL 30, 2013

REVISED -  
 REVISED -  
 REVISED -  
 REVISED -

**STATE OF ILLINOIS  
 DEPARTMENT OF TRANSPORTATION**

**ROADWAY PLANS**  
**IL 173 FROM ALPINE ROAD TO I-90**  
 SCALE: 1"=20' SHEET NO. OF SHEETS STA. 1009+00 TO STA. 1015+00

F.A.P. RTE.	SECTION	COUNTY	TOTAL SHEETS	SHEET NO.
303	129R	WINNEBAGO	968	146
CONTRACT NO. 64988			ILLINOIS FED. AID PROJECT	