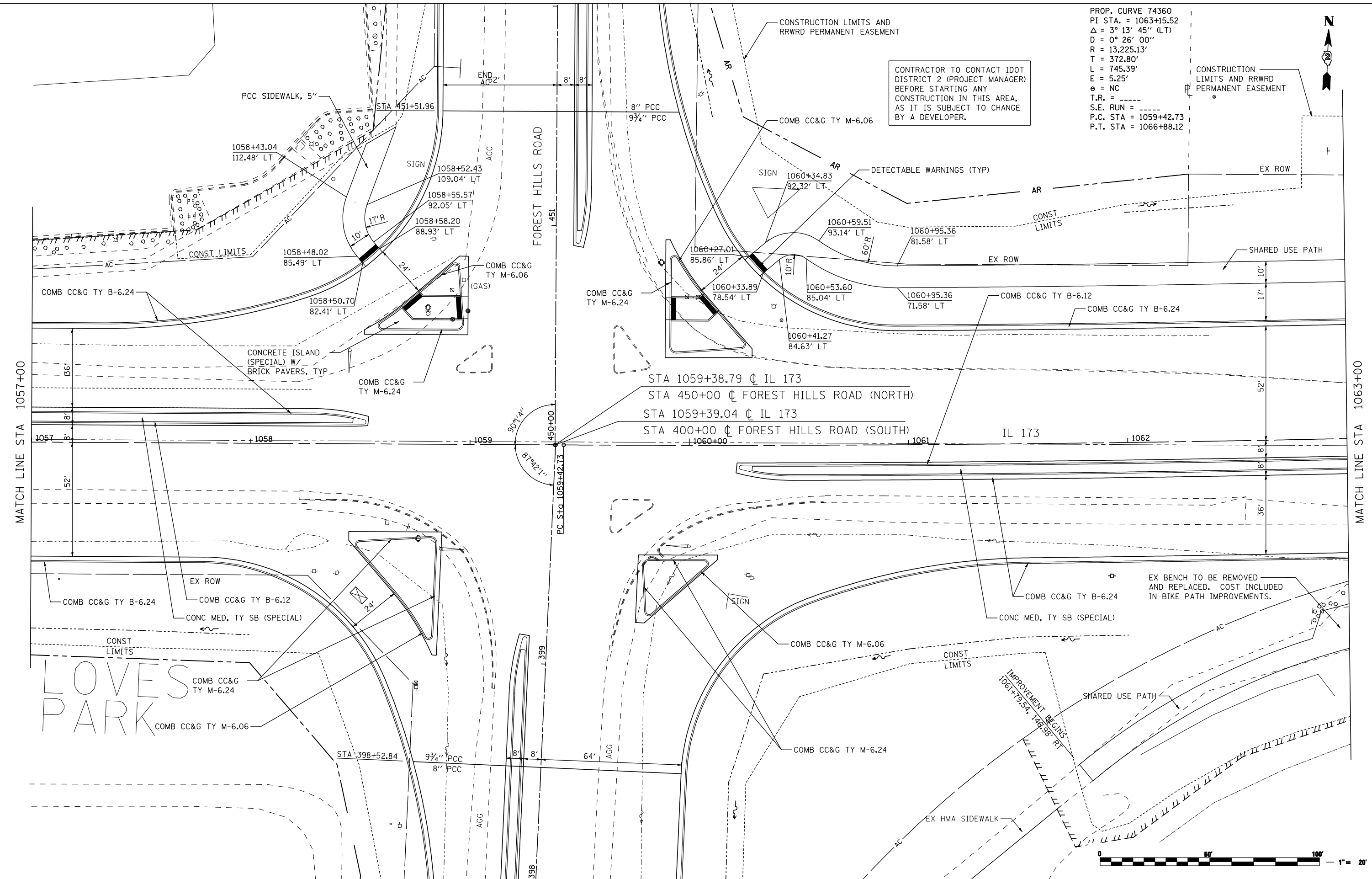


PROP. CURVE 74360
 PI STA. = 1063+15.52
 $\Delta = 3^\circ 13' 45''$ (LT)
 $D = 0^\circ 26' 00''$
 $R = 13,225.13'$
 $T = 372.80'$
 $L = 745.39'$
 $E = 5.25'$
 $e = NC$
 T.R. = -----
 S.E. RUN = -----
 P.C. STA = 1059+42.73
 P.T. STA = 1066+88.12



CONTRACTOR TO CONTACT IDOT DISTRICT 2 (PROJECT MANAGER) BEFORE STARTING ANY CONSTRUCTION IN THIS AREA, AS IT IS SUBJECT TO CHANGE BY A DEVELOPER.



FILE NAME = ... \CADD SHEETS\Z00793PLN09.dgn	USER NAME = Elgin III	DESIGNED - MJS	REVISED -
THE UPCHURCH GROUP, INC.	PLOT SCALE = 40.0000' / IN.	DRAWN - RMH	REVISED -
	PLOT DATE = 5/7/2013 8:32:41 AM	CHECKED - RLH	REVISED -
		DATE - APRIL 30, 2013	REVISED -

**STATE OF ILLINOIS
 DEPARTMENT OF TRANSPORTATION**

**ROADWAY PLANS
 IL 173 FROM ALPINE ROAD TO I-90**

SCALE: 1"=20' SHEET NO. OF SHEETS STA. 1057+00 TO STA. 1063+00

F.A.P. RTE.	SECTION	COUNTY	TOTAL SHEETS	SHEET NO.
303	129R	WINNEBAGO	968	154
CONTRACT NO. 64988			ILLINOIS FED. AID PROJECT	