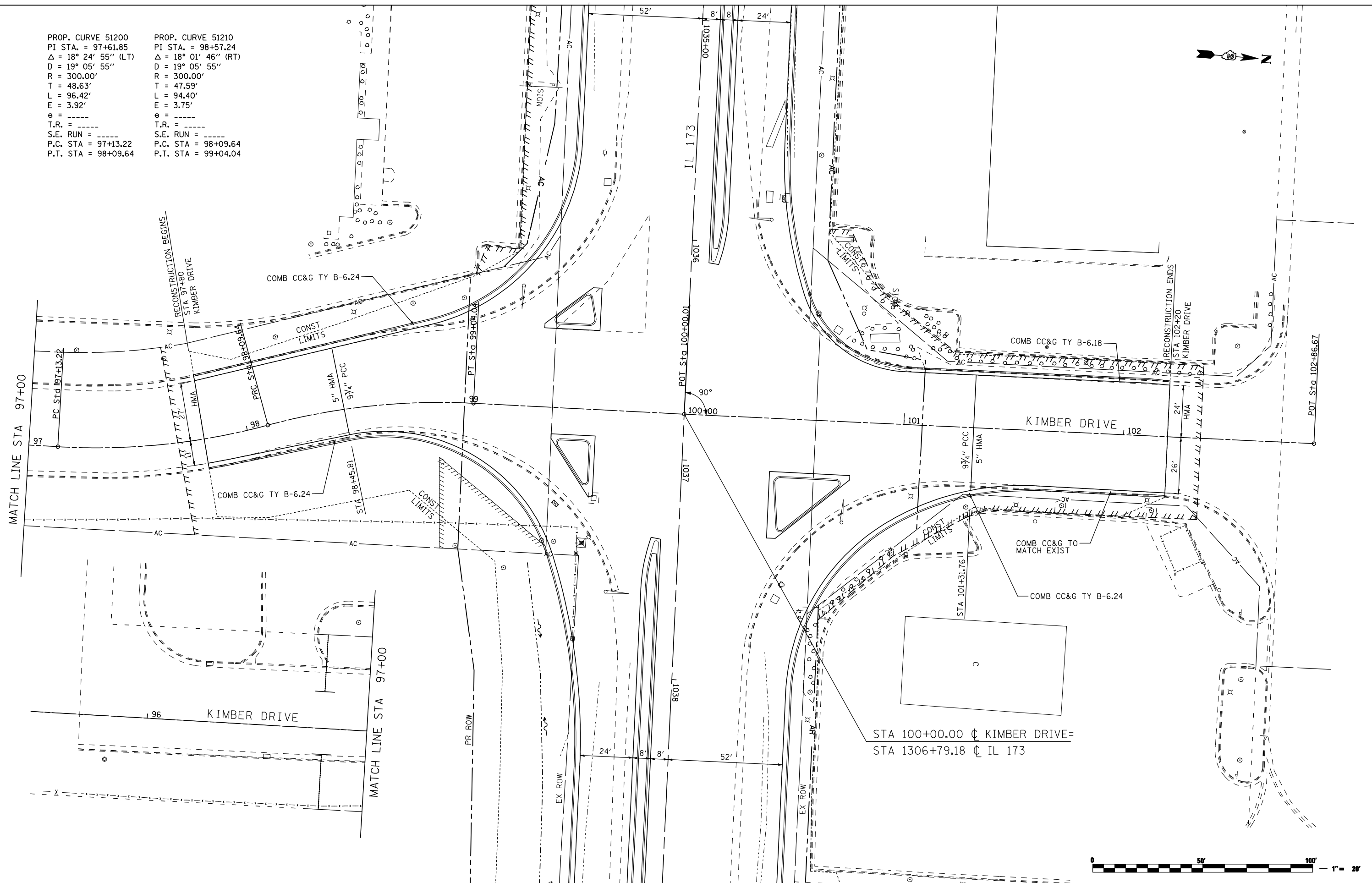


PROP. CURVE 51200
 PI STA. = 97+61.85
 $\Delta = 18^\circ 24' 55''$ (LT)
 $D = 19^\circ 05' 55''$
 $R = 300.00'$
 $T = 48.63'$
 $L = 96.42'$
 $E = 3.92'$
 $e = \text{---}$
 T.R. = ---
 S.E. RUN = ---
 P.C. STA = 97+13.22
 P.T. STA = 98+09.64

PROP. CURVE 51210
 PI STA. = 98+57.24
 $\Delta = 18^\circ 01' 46''$ (RT)
 $D = 19^\circ 05' 55''$
 $R = 300.00'$
 $T = 47.59'$
 $L = 94.40'$
 $E = 3.75'$
 $e = \text{---}$
 T.R. = ---
 S.E. RUN = ---
 P.C. STA = 98+09.64
 P.T. STA = 99+04.04



STA 100+00.00 \oslash KIMBER DRIVE =
 STA 1306+79.18 \oslash IL 173



FILE NAME =
 ... \CADD SHEETS\Z00793PLN28.dgn
THE UPCHURCH GROUP, INC.

USER NAME = Elgin 110
 DESIGNED - MJS
 DRAWN - RMH
 CHECKED - RLH
 DATE - APRIL 30, 2013

REVISED -
 REVISED -
 REVISED -
 REVISED -

STATE OF ILLINOIS
DEPARTMENT OF TRANSPORTATION

ROADWAY PLANS
KIMBER DRIVE

SCALE: 1"=20' SHEET NO. OF SHEETS STA. 95+68.88 TO STA. 102+86.67

F.A.P. RTE.	SECTION	COUNTY	TOTAL SHEETS	SHEET NO.
303	129R	WINNEBAGO	968	173
CONTRACT NO. 64988				
ILLINOIS FED. AID PROJECT				