

STA 396+61

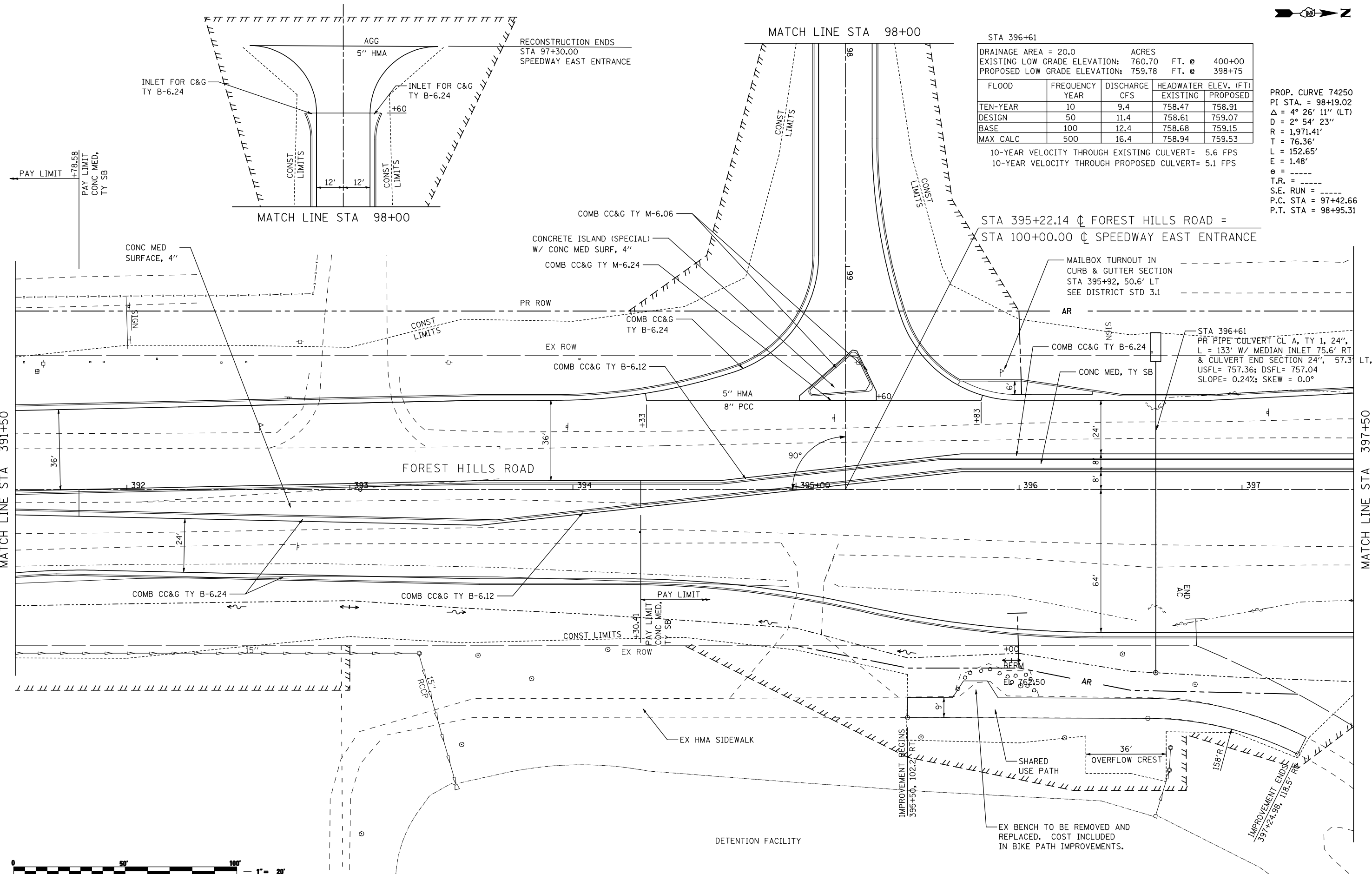
|   |   |
|---|---|
| DRAINAGE AREA = 20.0 ACRES                        | EXISTING LOW GRADE ELEVATION: 760.70 FT. @ 400+00 |
| PROPOSED LOW GRADE ELEVATION: 759.78 FT. @ 398+75 |   |

| FLOOD    | FREQUENCY YEAR | DISCHARGE CFS | HEADWATER ELEV. (FT) EXISTING | HEADWATER ELEV. (FT) PROPOSED |
|----------|----------------|---------------|-------------------------------|-------------------------------|
| TEN-YEAR | 10             | 9.4           | 758.47                        | 758.91                        |
| DESIGN   | 50             | 11.4          | 758.61                        | 759.07                        |
| BASE     | 100            | 12.4          | 758.68                        | 759.15                        |
| MAX CALC | 500            | 16.4          | 758.94                        | 759.53                        |

10-YEAR VELOCITY THROUGH EXISTING CULVERT= 5.6 FPS  
 10-YEAR VELOCITY THROUGH PROPOSED CULVERT= 5.1 FPS

PROP. CURVE 74250  
 PI STA. = 98+19.02  
 $\Delta = 4^\circ 26' 11''$  (LT)  
 $D = 2^\circ 54' 23''$   
 $R = 1,971.41'$   
 $T = 76.36'$   
 $L = 152.65'$   
 $E = 1.48'$   
 $e = \text{---}$   
 $T.R. = \text{---}$   
 $S.E. RUN = \text{---}$   
 $P.C. STA = 97+42.66$   
 $P.T. STA = 98+95.31$

STA 395+22.14  $\phi$  FOREST HILLS ROAD =  
 STA 100+00.00  $\phi$  SPEEDWAY EAST ENTRANCE



|  |                       |                       |           |
|--|-----------------------|-----------------------|-----------|
| FILE NAME = ... \CADD SHEETS\Z00793PLN33.dgn | USER NAME = Elgin III | DESIGNED - MJS        | REVISED - |
|  |                       | DRAWN - RMH           | REVISED - |
|  |                       | CHECKED - RLH         | REVISED - |
|  |                       | DATE - APRIL 30, 2013 | REVISED - |

|                          |
|--------------------------|
| THE UPCHURCH GROUP, INC. |
|--------------------------|

**STATE OF ILLINOIS  
 DEPARTMENT OF TRANSPORTATION**

**ROADWAY PLANS  
 FOREST HILLS ROAD**

SCALE: 1"=20' SHEET NO. OF SHEETS STA. 391+50 TO STA. 397+50

|                           |              |                  |                    |               |
|---------------------------|--------------|------------------|--------------------|---------------|
| F.A.P. RTE. 303           | SECTION 129R | COUNTY WINNEBAGO | TOTAL SHEETS 968   | SHEET NO. 178 |
|                           |              |                  | CONTRACT NO. 64988 |               |
| ILLINOIS FED. AID PROJECT |              |                  |                    |               |