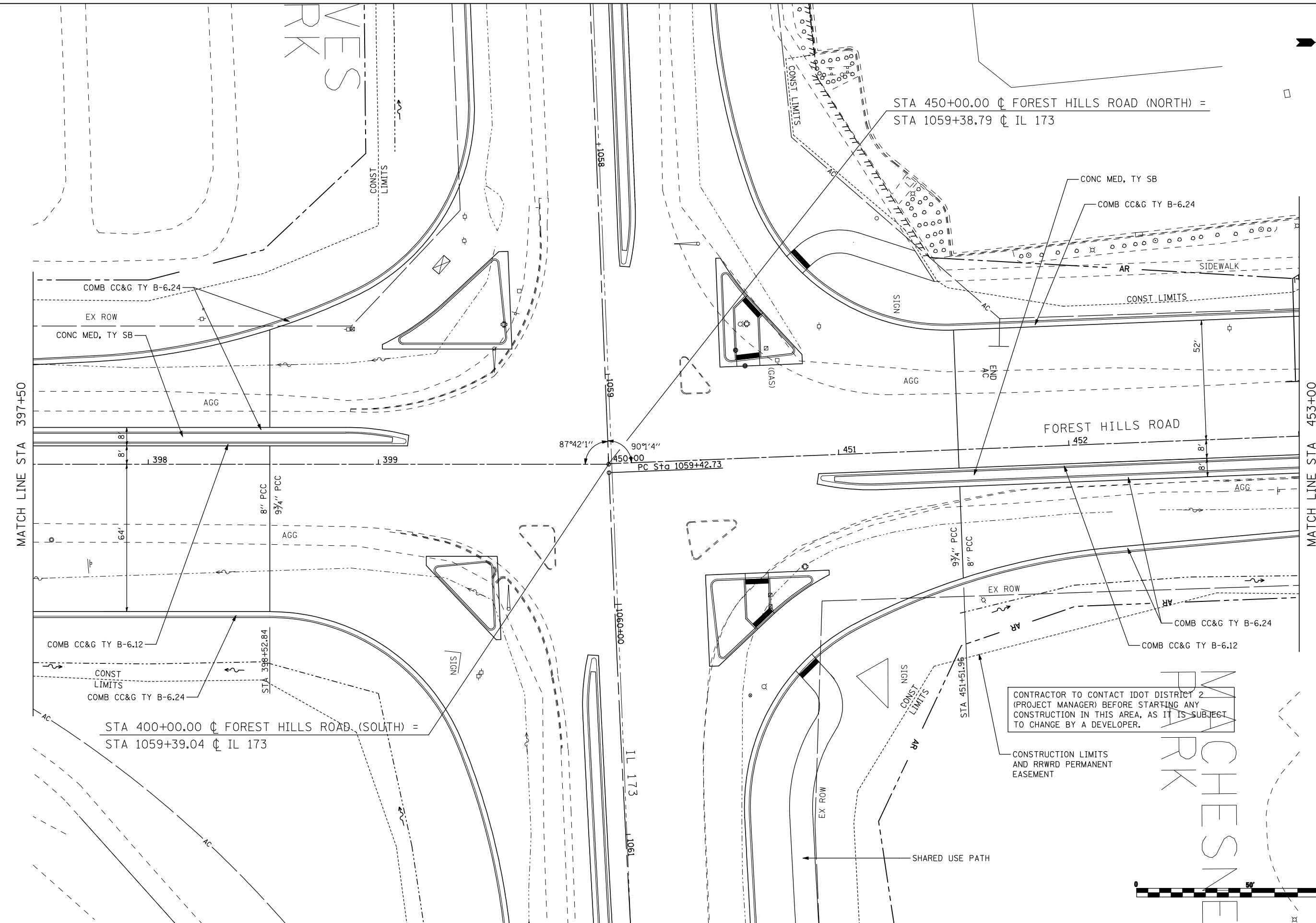


STA 450+00.00 ϕ FOREST HILLS ROAD (NORTH) =
 STA 1059+38.79 ϕ IL 173



MATCH LINE STA 397+50

MATCH LINE STA 453+00

CONTRACTOR TO CONTACT IDOT DISTRICT 2
 (PROJECT MANAGER) BEFORE STARTING ANY
 CONSTRUCTION IN THIS AREA, AS IT IS SUBJECT
 TO CHANGE BY A DEVELOPER.

CONSTRUCTION LIMITS
 AND RRWRD PERMANENT
 EASEMENT



FILE NAME = ... \CADD SHEETS\Z00793PLN34.dgn	USER NAME = Elgin III	DESIGNED - MJS	REVISED -
		DRAWN - RMH	REVISED -
		CHECKED - RLH	REVISED -
		DATE - APRIL 30, 2013	REVISED -
THE UPCHURCH GROUP, INC.	PLOT SCALE = 40.0000' / IN. PLOT DATE = 5/7/2013 9:00:14 AM		

**STATE OF ILLINOIS
 DEPARTMENT OF TRANSPORTATION**

ROADWAY PLANS		F.A.P. RTE.	SECTION	COUNTY	TOTAL SHEETS	SHEET NO.
FOREST HILLS ROAD		303	129R	WINNEBAGO	968	179
SCALE: 1"=20'	SHEET NO.	OF	SHEETS	STA. 397+50	TO STA. 453+00	CONTRACT NO. 64988

F.A.P. RTE.	SECTION	COUNTY	TOTAL SHEETS	SHEET NO.
303	129R	WINNEBAGO	968	179
ILLINOIS FED. AID PROJECT				