

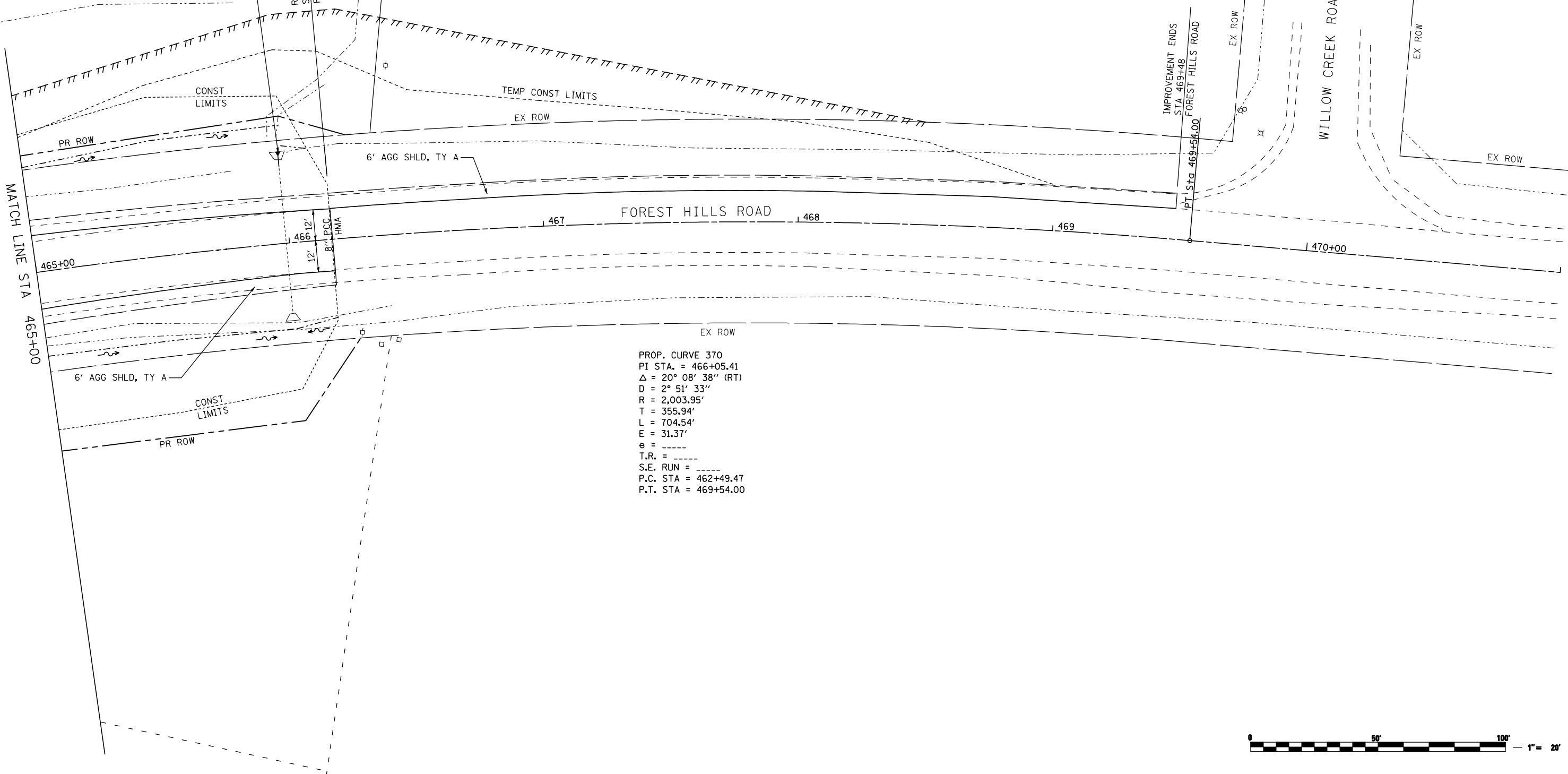


STA 465+98.76
 PR PIPE CULVERT CL C, TY 2, 36" EORS, L=4'
 W/ PRMES 34.4' LT TO 30.3' LT
 USFL= 754.21; DSFL= 754.16
 SLOPE= 0.50%; SKEW= 0°

RECONSTRUCTION ENDS
 STA 466+17
 FOREST HILLS ROAD

IMPROVEMENT ENDS
 STA 469+48
 FOREST HILLS ROAD

PT STA 469+54.00



PROP. CURVE 370
 PI STA. = 466+05.41
 $\Delta = 20^\circ 08' 38''$ (RT)
 D = $2^\circ 51' 33''$
 R = 2,003.95'
 T = 355.94'
 L = 704.54'
 E = 31.37'
 $\theta =$ -----
 T.R. = -----
 S.E. RUN = -----
 P.C. STA = 462+49.47
 P.T. STA = 469+54.00



FILE NAME =
 ...:\CADD SHEETS\200793PLN37.dgn
THE UPCHURCH GROUP, INC.

USER NAME = Elgin III
 PLOT SCALE = 40.0000' / IN.
 PLOT DATE = 5/7/2013 9:03:26 AM

DESIGNED - MJS
 DRAWN - RMH
 CHECKED - RLH
 DATE - APRIL 30, 2013

REVISED -
 REVISED -
 REVISED -
 REVISED -

**STATE OF ILLINOIS
 DEPARTMENT OF TRANSPORTATION**

**ROADWAY PLANS
 FOREST HILLS ROAD**

SCALE: 1"=20' SHEET NO. OF SHEETS STA. 465+00 TO STA. 471+00

| F.A.P. RTE. | SECTION | COUNTY | TOTAL SHEETS | SHEET NO. |
|--------------------|---------|-----------|---------------------------|-----------|
| 303 | 129R | WINNEBAGO | 968 | 182 |
| CONTRACT NO. 64988 | | | ILLINOIS FED. AID PROJECT | |