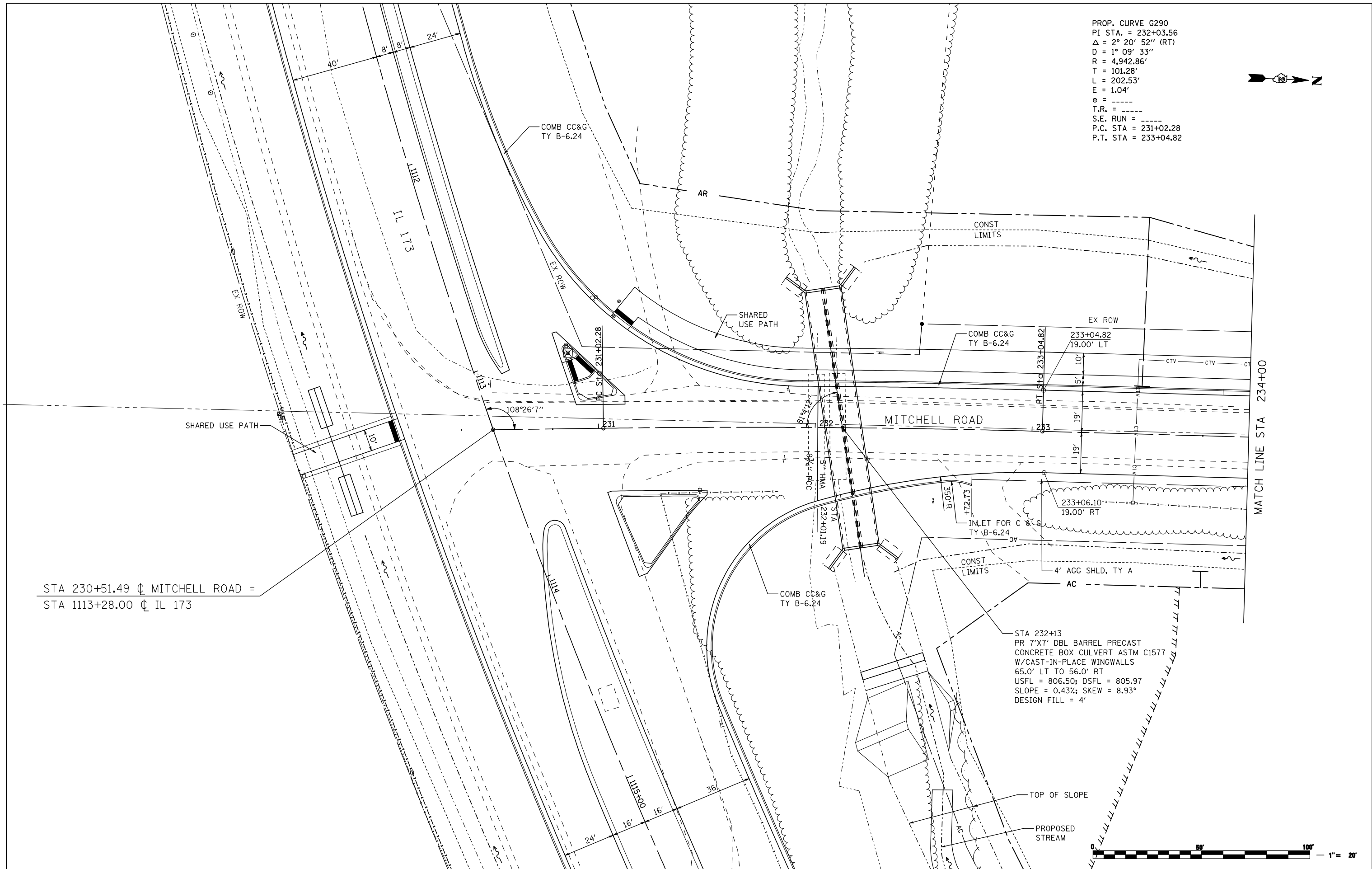
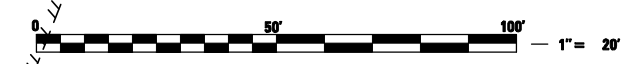


PROP. CURVE G290
 PI STA. = 232+03.56
 $\Delta = 2^\circ 20' 52''$ (RT)
 $D = 1^\circ 09' 33''$
 $R = 4,942.86'$
 $T = 101.28'$
 $L = 202.53'$
 $E = 1.04'$
 $e = \text{-----}$
 $T.R. = \text{-----}$
 $S.E. \text{ RUN} = \text{-----}$
 $P.C. \text{ STA} = 231+02.28$
 $P.T. \text{ STA} = 233+04.82$



STA 230+51.49 \cap MITCHELL ROAD =
 STA 1113+28.00 \cap IL 173

STA 232+13
 PR 7'X7' DBL BARREL PRECAST
 CONCRETE BOX CULVERT ASTM C1577
 W/CAST-IN-PLACE WINGWALLS
 65.0' LT TO 56.0' RT
 USFL = 806.50; DSFL = 805.97
 SLOPE = 0.43%; SKEW = 8.93°
 DESIGN FILL = 4'



FILE NAME = ...\\CADD SHEETS\200793PLN41.dgn	USER NAME = Elgin 111	DESIGNED - MJS	REVISED -
THE UPCHURCH GROUP, INC.	PLOT SCALE = 40.0000' / IN.	DRAWN - RMH	REVISED -
	PLOT DATE = 5/7/2013 9:19:18 AM	CHECKED - RLH	REVISED -
		DATE - APRIL 30, 2013	REVISED -

**STATE OF ILLINOIS
 DEPARTMENT OF TRANSPORTATION**

**ROADWAY PLANS
 MITCHELL ROAD**

SCALE: 1"=20' SHEET NO. OF SHEETS STA. 230+51.49 TO STA. 234+00

F.A.P. RTE.	SECTION	COUNTY	TOTAL SHEETS	SHEET NO.
303	129R	WINNEBAGO	968	186
			CONTRACT NO. 64988	
ILLINOIS FED. AID PROJECT				