

MATCH LINE STA 544+00

PAINT PAV'T MARKING - LINE 4", YELLOW
3' LINE, 10' SPACE
TYP

HMA SURF CSE, IL9.5FG, N50, 3"
AGG BASE CSE, TY B 6"

12 PIPE CULVERTS, CL D, TY 1, 21"Ø - 1 @ 61' EA
W/ 2 - END SEC, 21"
STA 555+33.00, 31.73' LT TO 29.25' RT
U.S.F.L. 833.96, D.S.F.L. 833.15
SLOPE = 1.33%, SKEW = 10°

CURVE - 17
PI STA. = 555+36.12
Δ = 48° 17' 15" (LT)
D = 17° 37' 46"
R = 325.00'
T = 145.68'
L = 273.90'
E = 31.16'
e = - - - -
T.R. = - - - -
S.E. RUN = - - - -
P.C. STA. = 553+90.44
P.T. STA. = 556+64.35

CURVE - 14
PI STA. = 547+07.10
Δ = 33° 36' 43" (RT)
D = 16° 22' 13"
R = 350.00'
T = 105.71'
L = 205.32'
E = 15.62'
e = - - - -
T.R. = - - - -
S.E. RUN = - - - -
P.C. STA. = 546+01.39
P.T. STA. = 548+06.71

CURVE - 15
PI STA. = 550+12.49
Δ = 52° 48' 14" (LT)
D = 19° 05' 55"
R = 300.00'
T = 148.93'
L = 276.48'
E = 34.93'
e = - - - -
T.R. = - - - -
S.E. RUN = - - - -
P.C. STA. = 548+63.55
P.T. STA. = 551+40.03

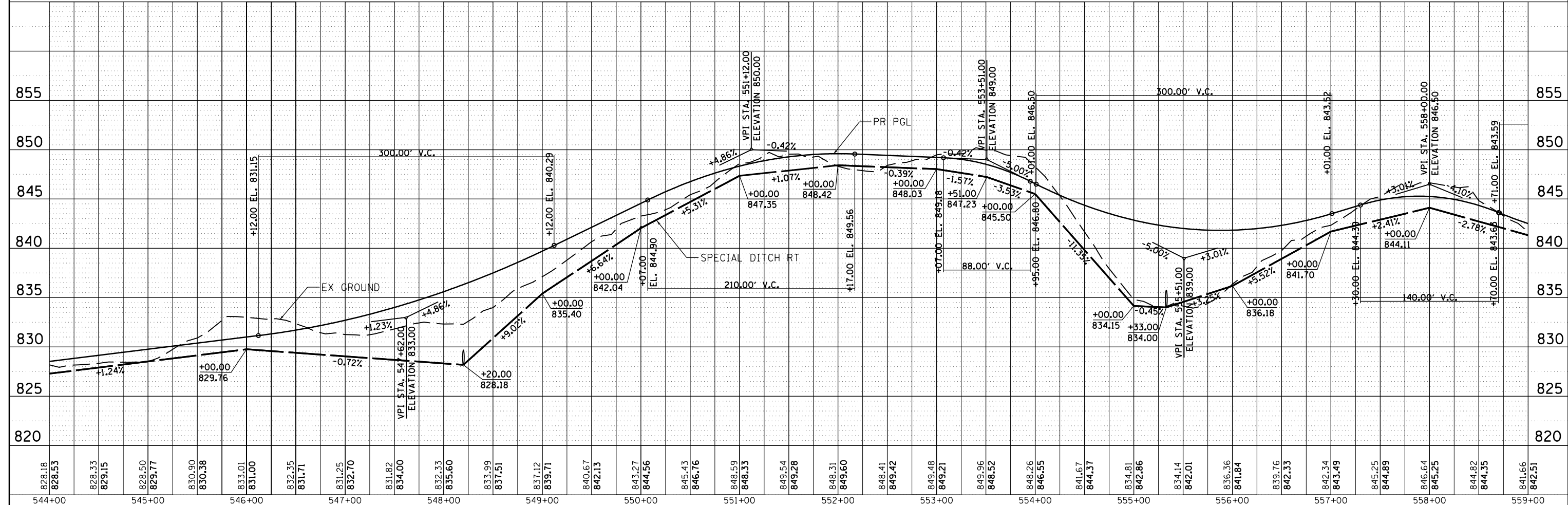
CURVE - 16
PI STA. = 552+73.29
Δ = 33° 04' 23" (RT)
D = 17° 37' 46"
R = 325.00'
T = 96.50'
L = 187.60'
E = 14.02'
e = - - - -
T.R. = - - - -
S.E. RUN = - - - -
P.C. STA. = 551+76.80
P.T. STA. = 553+64.40

11 PIPE CULVERTS, CL D, TY 1, 18"Ø - 1 @ 59.5' EA
W/ 2 - END SEC, 18"
STA 548+20.00, 30.96' LT TO 28.53' RT
U.S.F.L. 828.15, D.S.F.L. 827.55
SLOPE = 1.0%, SKEW = 0°

CURVE - 18
PI STA. = 558+78.17
Δ = 24° 24' 00" (RT)
D = 16° 22' 13"
R = 350.00'
T = 75.67'
L = 149.05'
E = 8.09'
e = - - - -
T.R. = - - - -
S.E. RUN = - - - -
P.C. STA. = 558+02.50
P.T. STA. = 559+51.55

DATE	
BY	
PLAN	
NO.	
SURVEYED	
ALIGNED	
CHECKED	
NO.	
NOTE BOOK	
FILE NAME	
CARD FILE NAME	

DATE	
BY	
PROFILE	
NO.	
SURVEYED	
GRADES	
CHECKED	
NO.	
NOTE BOOK	
FILE NAME	
NOTATIONS	
CARD	



USER NAME = *USER*	DESIGNED - THW	REVISED -
	DRAWN - THW	REVISED -
PLOT SCALE = *SCALE*	CHECKED - AJK	REVISED -
PLOT DATE = *DATE*	DATE - 4.30 2013	REVISED -

STATE OF ILLINOIS
DEPARTMENT OF TRANSPORTATION

PLAN & PROFILE - ROCK CUT
SHARED USE PATH

SCALE: SHEET NO. OF SHEETS STA. 544+00 TO STA. 559+00

F.A.P. RTE.	SECTION	COUNTY	TOTAL SHEETS	SHEET NO.
303	129R	WINNEBAGO	968	216
CONTRACT NO. 64988				ILLINOIS FED. AID PROJECT