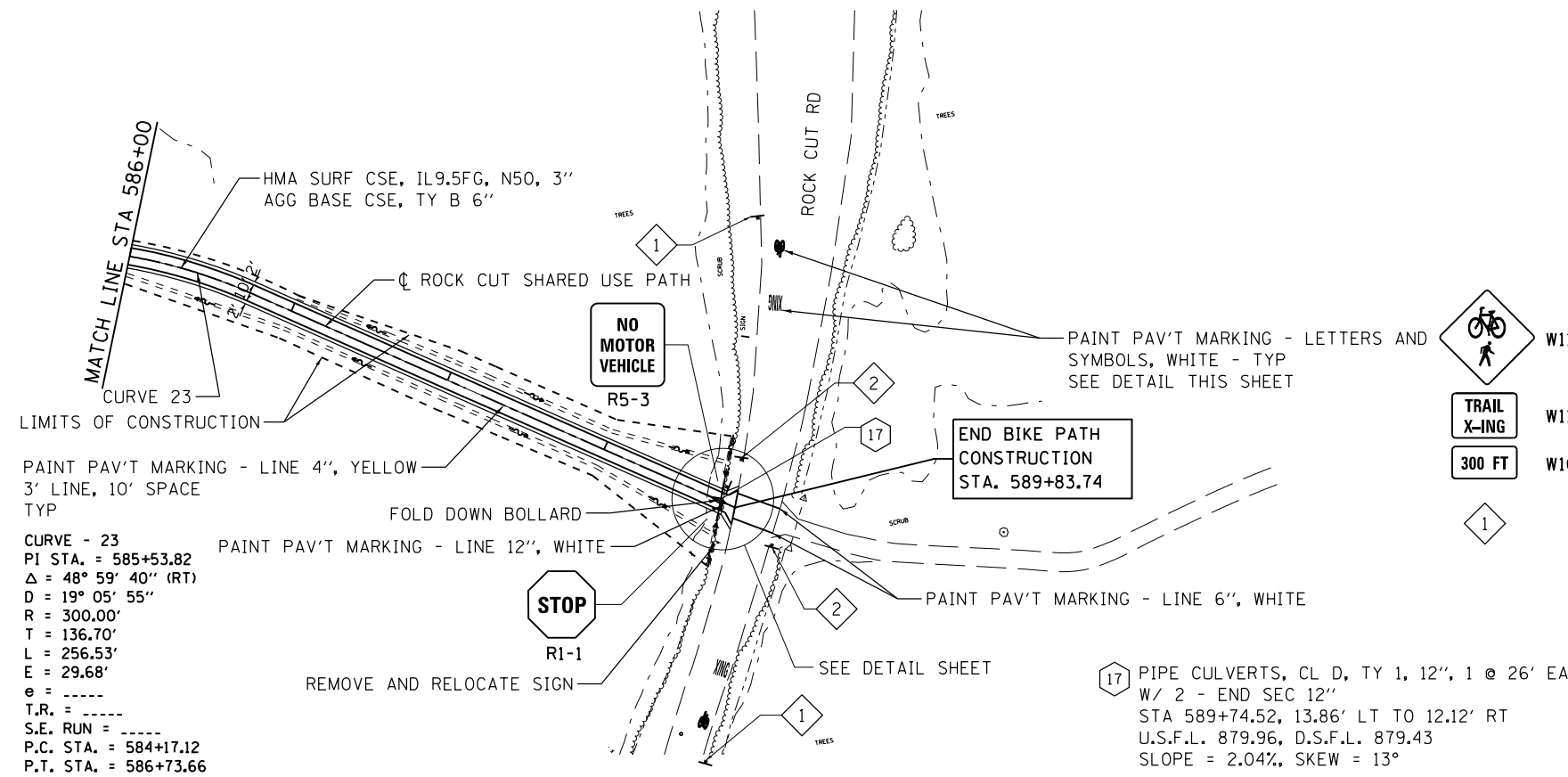
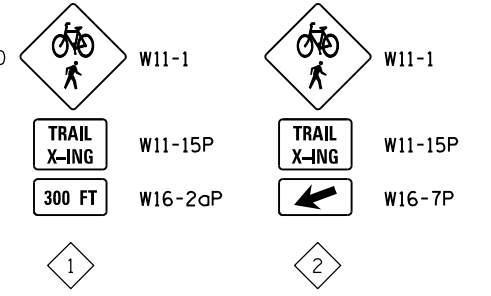
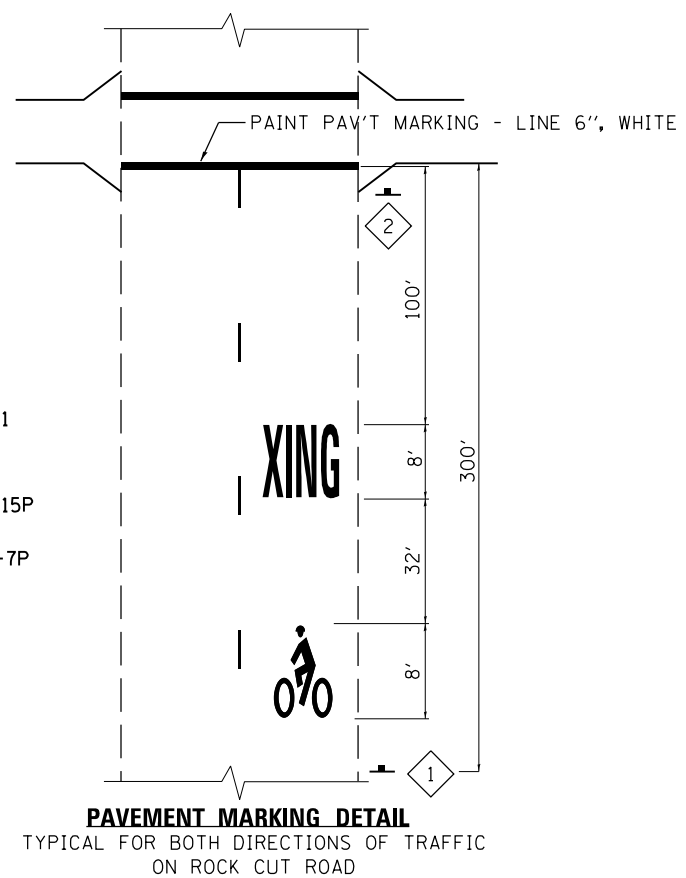


PLAN	SURVEYED	BY	DATE
	PLOTTED		
	ALIGNED		
	CHECKED		
	FILED		
	NO.		

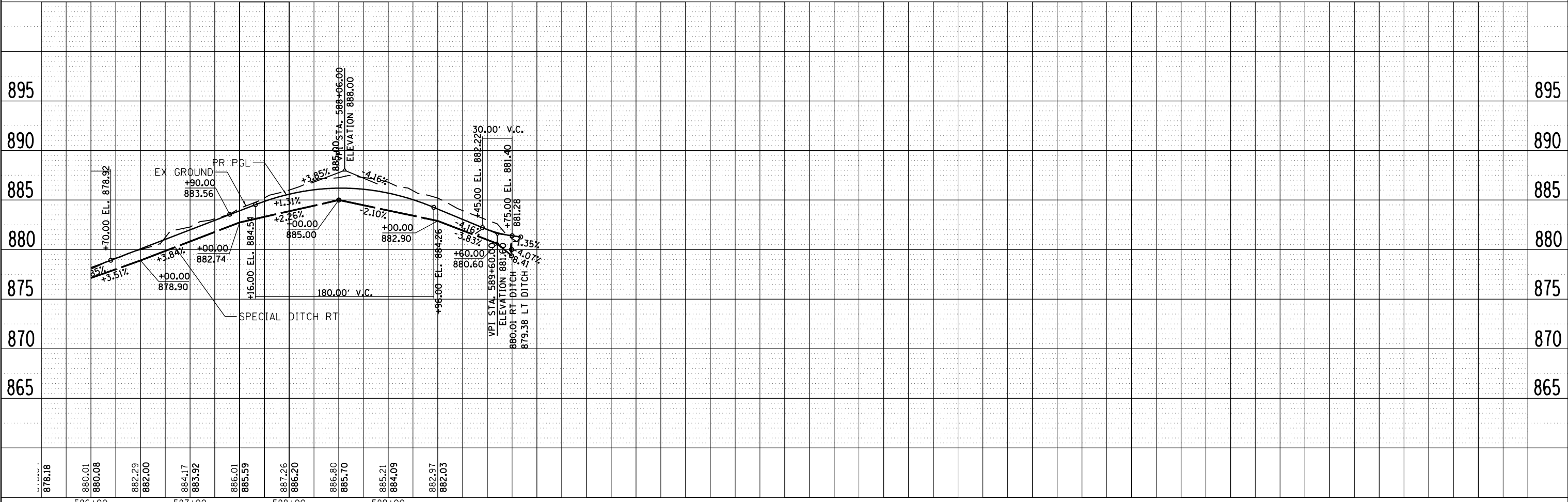
PROFILE	SURVEYED	BY	DATE
	PLOTTED		
	GRADES		
	CHECKED		
	STRUCTURE		
	NOTATIONS		
	CHKD		
	NO.		



CURVE - 23
 PI STA. = 585+53.82
 $\Delta = 48^\circ 59' 40''$ (RT)
 $D = 19^\circ 05' 55''$
 $R = 300.00'$
 $T = 136.70'$
 $L = 256.53'$
 $E = 29.68'$
 $e = \text{-----}$
 $T.R. = \text{-----}$
 $S.E. \text{ RUN} = \text{-----}$
 $P.C. \text{ STA.} = 584+17.12$
 $P.T. \text{ STA.} = 586+73.66$



17 PIPE CULVERTS, CL D, TY 1, 12", 1 @ 26' EA
 W/ 2 - END SEC 12"
 STA 589+74.52, 13.86' LT TO 12.12' RT
 U.S.F.L. 879.96, D.S.F.L. 879.43
 SLOPE = 2.04%, SKEW = 13°



878.18	880.01	880.08	882.29	882.00	884.17	883.92	886.01	885.99	887.26	886.20	886.80	885.70	885.21	884.09	882.97	882.03
586+00	587+00	587+00	587+00	587+00	587+00	587+00	587+00	587+00	587+00	587+00	587+00	587+00	587+00	587+00	587+00	587+00

DESIGNED - THW	REVISED -
DRAWN - THW	REVISED -
CHECKED - AJK	REVISED -
DATE - 4.30 2013	REVISED -

SCALE:		SHEET NO. 7 OF 7 SHEETS		STA. 586+00 TO STA. 589+74.04	
--------	--	-------------------------	--	-------------------------------	--

F.A.P. RTE. 303	SECTION 129R	COUNTY WINNEBAGO	TOTAL SHEETS 968	SHEET NO. 219
CONTRACT NO. 64988				
ILLINOIS FED. AID PROJECT				

FUHRMANN
 ENGINEERING INC.
 CIVIL ENGINEERS/LAND SURVEYORS
 2852 South 11th Street
 Springfield, Illinois 62703

STATE OF ILLINOIS
 DEPARTMENT OF TRANSPORTATION

PLAN & PROFILE - ROCK CUT
 SHARED USE PATH