

**TEMPORARY STRIPING LEGEND**

- ① PAVEMENT MARKING SYMBOL
- ② 4" SOLID WHITE EDGE LINE
- ③ 4" SOLID YELLOW EDGE LINE
- ④ 4" SOLID YELLOW DOUBLE CENTERLINE
- ⑤ 4" WHITE 30' SKIP 10' DASH
- ⑥ 4" YELLOW 30' SKIP 10' DASH
- ⑦ 8" SOLID WHITE LANE LINE
- ⑧ 8" WHITE 4' SKIP 2' DASH
- ⑨ 8" WHITE 6' SKIP 2' DASH
- ⑩ 24" SOLID WHITE STOP BAR
- ⑪ 12" SOLID WHITE DIAGONALS (ISLANDS)
- ⑫ 12" SOLID WHITE DIAGONALS, 20' C-C
- ⑬ 12" SOLID WHITE DIAGONALS, 30' C-C
- ⑭ 12" SOLID YELLOW DIAGONALS, 30' C-C
- ⑮ 12" SOLID WHITE DIAGONALS, 75' C-C
- ⑯ 12" SOLID YELLOW DIAGONALS, 75' C-C

**ROAD CLOSED**  
1 MILE AHEAD  
LOCAL TRAFFIC ONLY  
R11-3a (60x30)  
PLACE JUST EAST OF  
BURDEN RD ON  
FOREST HILLS RD  
MOUNT ON TY III BARRICADE  
(SEE DISTRICT 2 STANDARD 40.1)

**ROAD CLOSED**  
R11-2 48x30  
MOUNT ON BARRICADE  
SEE DISTRICT 2 STANDARD  
40.1 (CONDITION 1)  
FOR ADVANCED SIGNING

**ROAD CLOSED AHEAD**  
W20-31(0)48  
W16-5PR(0) (24x12)

**ROAD CLOSED**  
1 MILE

**NO ACCESS**  
to IL 173

W20-31(0)48  
LOCATE ON FOREST HILLS RD  
JUST EAST OF IL 251

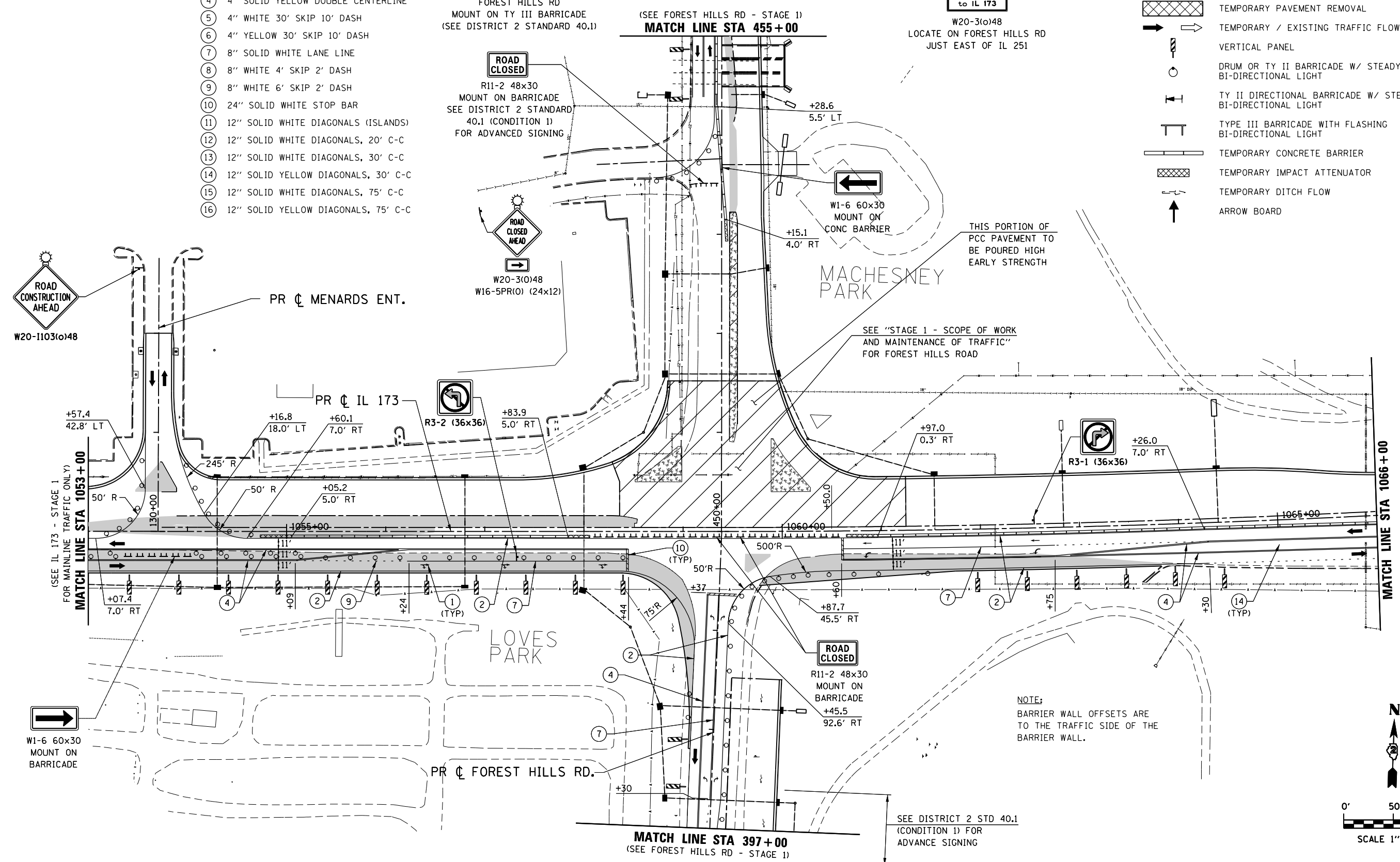
**SYMBOL LEGEND**

- WORK AREA
- TEMPORARY PAVEMENT PLACED THIS STAGE
- TEMPORARY PAVEMENT PLACED PREVIOUS STAGE
- TEMPORARY PAVEMENT REMOVAL
- TEMPORARY / EXISTING TRAFFIC FLOW
- VERTICAL PANEL
- DRUM OR TY II BARRICADE W/ STEADY BURN BI-DIRECTIONAL LIGHT
- TY II DIRECTIONAL BARRICADE W/ STEADY BURN BI-DIRECTIONAL LIGHT
- TYPE III BARRICADE WITH FLASHING BI-DIRECTIONAL LIGHT
- TEMPORARY CONCRETE BARRIER
- TEMPORARY IMPACT ATTENUATOR
- TEMPORARY DITCH FLOW
- ARROW BOARD

**ROAD CONSTRUCTION AHEAD**  
W20-1103(0)48

(SEE IL 173 - STAGE 1  
FOR MAINLINE TRAFFIC ONLY)  
MATCH LINE STA 1053 + 00

W1-6 60x30  
MOUNT ON  
BARRICADE

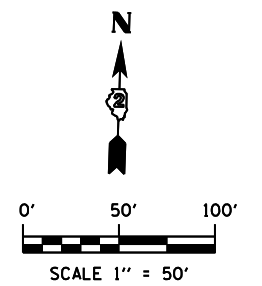


THIS PORTION OF  
PCC PAVEMENT TO  
BE POURED HIGH  
EARLY STRENGTH

SEE "STAGE 1 - SCOPE OF WORK  
AND MAINTENANCE OF TRAFFIC"  
FOR FOREST HILLS ROAD

**NOTE:**  
BARRIER WALL OFFSETS ARE  
TO THE TRAFFIC SIDE OF THE  
BARRIER WALL.

SEE DISTRICT 2 STD 40.1  
(CONDITION 1) FOR  
ADVANCE SIGNING



FILE NAME = S:\Projects\2012\JOBS\12-95-S10206 Upchurch Loves Park 02 Ph II\Cad\CADD Sheets\208793510.SIC-IL173.06.dgn  
MODEL = \$MODEL\$  
PLOT DRIVER = \$PLTDV\$



USER NAME = rgoertz	DESIGNED - RG	REVISED -
PLOT SCALE = 100.0000' / in.	DRAWN - TRF	REVISED -
PLOT DATE = 7/26/2013	CHECKED - CMS	REVISED -
	DATE - APRIL 30, 2013	REVISED -

**STATE OF ILLINOIS**  
**DEPARTMENT OF TRANSPORTATION**

**STAGING PLAN - STAGE 1C**  
**IL 173**

SCALE: 1" = 50' SHEET NO. OF SHEETS STA. 1053+00 TO STA. 1066+00

F.A.P. RTE.	SECTION	COUNTY	TOTAL SHEETS	SHEET NO.
303	129R	WINNEBAGO	968	273
CONTRACT NO. 64988				
FED. ROAD DIST. NO. 2 ILLINOIS FED. AID PROJECT				