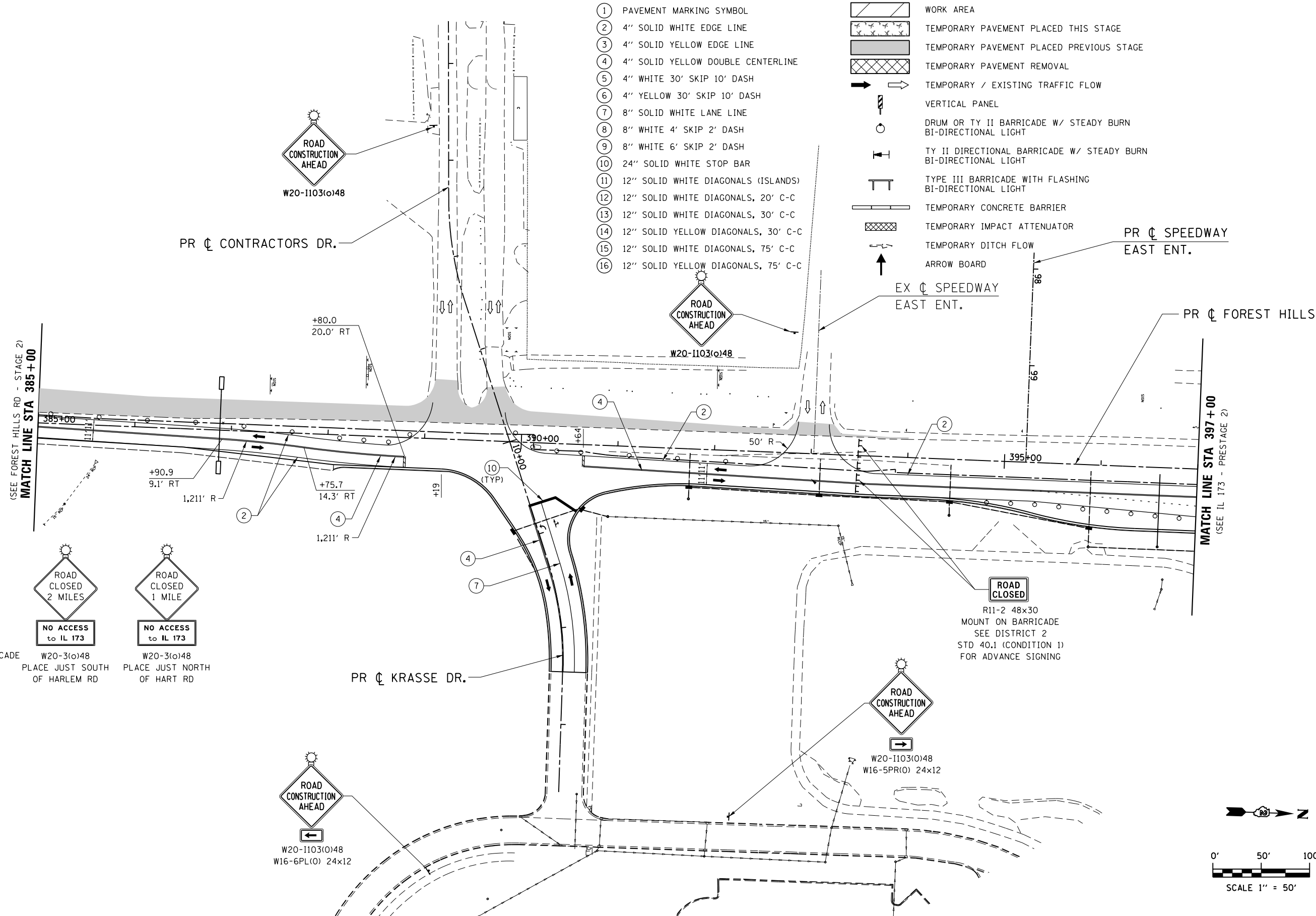


TEMPORARY STRIPING LEGEND

- ① PAVEMENT MARKING SYMBOL
- ② 4" SOLID WHITE EDGE LINE
- ③ 4" SOLID YELLOW EDGE LINE
- ④ 4" SOLID YELLOW DOUBLE CENTERLINE
- ⑤ 4" WHITE 30' SKIP 10' DASH
- ⑥ 4" YELLOW 30' SKIP 10' DASH
- ⑦ 8" SOLID WHITE LANE LINE
- ⑧ 8" WHITE 4' SKIP 2' DASH
- ⑨ 8" WHITE 6' SKIP 2' DASH
- ⑩ 24" SOLID WHITE STOP BAR
- ⑪ 12" SOLID WHITE DIAGONALS (ISLANDS)
- ⑫ 12" SOLID WHITE DIAGONALS, 20' C-C
- ⑬ 12" SOLID WHITE DIAGONALS, 30' C-C
- ⑭ 12" SOLID YELLOW DIAGONALS, 30' C-C
- ⑮ 12" SOLID WHITE DIAGONALS, 75' C-C
- ⑯ 12" SOLID YELLOW DIAGONALS, 75' C-C

SYMBOL LEGEND

- WORK AREA
- TEMPORARY PAVEMENT PLACED THIS STAGE
- TEMPORARY PAVEMENT PLACED PREVIOUS STAGE
- TEMPORARY PAVEMENT REMOVAL
- TEMPORARY / EXISTING TRAFFIC FLOW
- VERTICAL PANEL
- DRUM OR TY II BARRICADE W/ STEADY BURN BI-DIRECTIONAL LIGHT
- TY II DIRECTIONAL BARRICADE W/ STEADY BURN BI-DIRECTIONAL LIGHT
- TYPE III BARRICADE WITH FLASHING BI-DIRECTIONAL LIGHT
- TEMPORARY CONCRETE BARRIER
- TEMPORARY IMPACT ATTENUATOR
- TEMPORARY DITCH FLOW
- ARROW BOARD



ROAD CLOSED
2 MILES AHEAD
LOCAL TRAFFIC ONLY
R11-3a (60x30)
PLACE JUST NORTH
OF HARLEM RD
MOUNT ON TY III BARRICADE

ROAD CLOSED
2 MILES
NO ACCESS
to IL 173
W20-3(o)48
PLACE JUST SOUTH
OF HARLEM RD

ROAD CLOSED
1 MILE
NO ACCESS
to IL 173
W20-3(o)48
PLACE JUST NORTH
OF HART RD

ROAD CLOSED
R11-2 48x30
MOUNT ON BARRICADE
SEE DISTRICT 2
STD 40.1 (CONDITION 1)
FOR ADVANCE SIGNING

ROAD CONSTRUCTION AHEAD
W20-1103(O)48
W16-6PL(O) 24x12

ROAD CONSTRUCTION AHEAD
W20-1103(O)48
W16-5PR(O) 24x12

FILE NAME = S:\Projects\2012\JOBS\12-95-S10206 Upchurch Loves Park 02 Ph II\Cad\CADD Sheets\20879310.S.Pre2-Forest.Hills.02.dgn
MODEL = \$MODEL\$
PLOT DRIVER = \$PLTDVRS\$



USER NAME = rgoertz	DESIGNED - RG	REVISED -
	DRAWN - TRF	REVISED -
PLOT SCALE = 100.0000' / in.	CHECKED - CMS	REVISED -
PLOT DATE = 7/26/2013	DATE - APRIL 30, 2013	REVISED -

**STATE OF ILLINOIS
DEPARTMENT OF TRANSPORTATION**

**STAGING PLAN - PRESTAGE 2
FOREST HILLS RD**
SCALE: 1" = 50' SHEET NO. OF SHEETS STA. 385+00 TO STA. 397+00

F.A.P. RTE.	SECTION	COUNTY	TOTAL SHEETS	SHEET NO.
303	129R	WINNEBAGO	968	286
CONTRACT NO. 64988				
FED. ROAD DIST. NO. 2 ILLINOIS FED. AID PROJECT				