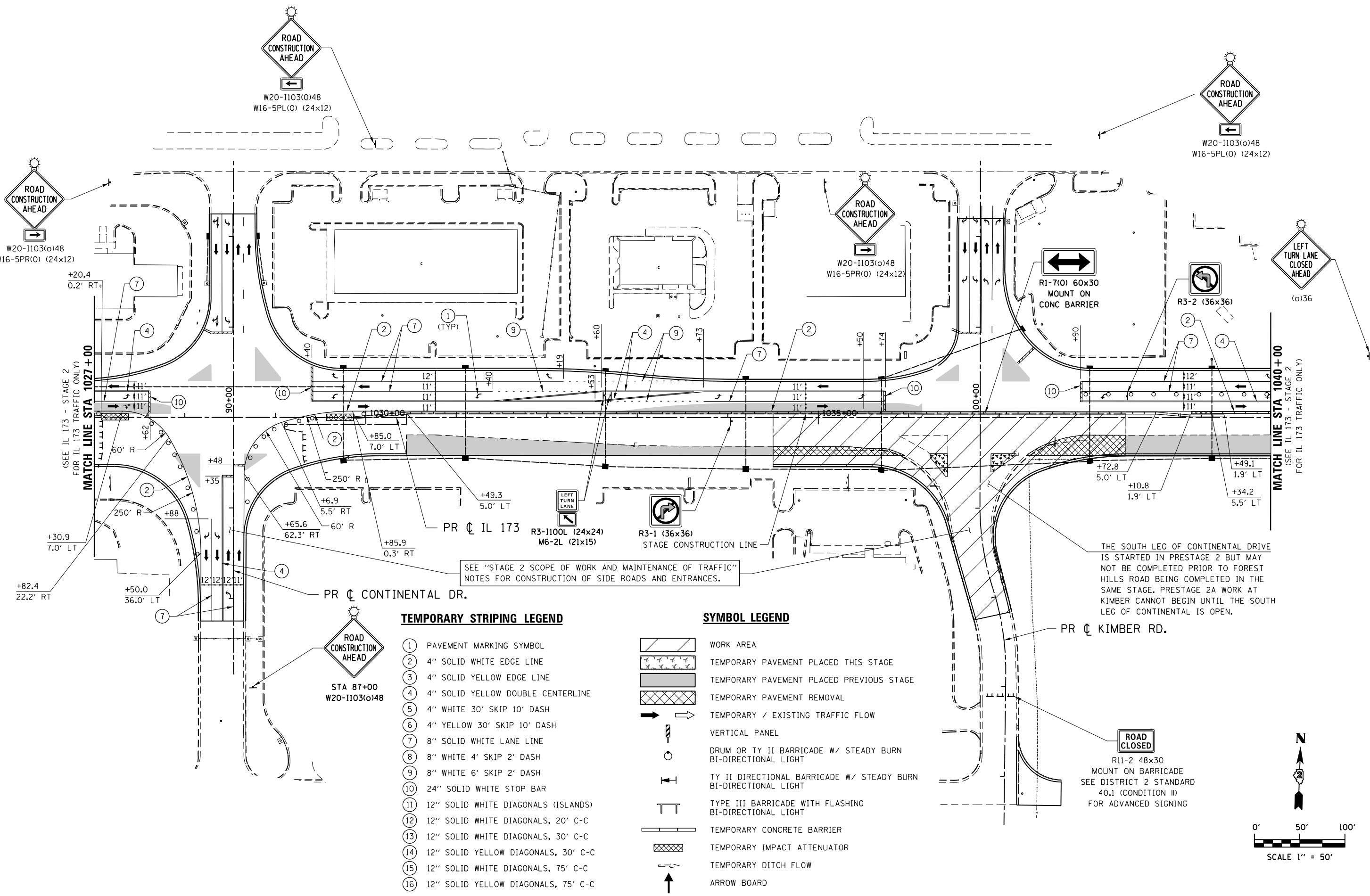


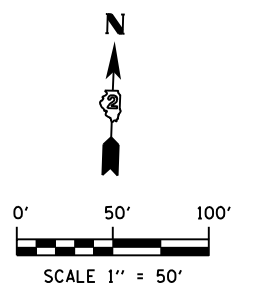
FILE NAME = S:\Projects\2012\JOBS\12-95-S10206 Upchurch Loves Park 02 Ph. II\Cad\CADD Sheets\208793510.S.Pre2A-IL173.dgn
 MODEL = \$MODEL\$
 PLOT DRIVER = \$PLTDVRS\$



- TEMPORARY STRIPING LEGEND**
- ① PAVEMENT MARKING SYMBOL
 - ② 4" SOLID WHITE EDGE LINE
 - ③ 4" SOLID YELLOW EDGE LINE
 - ④ 4" SOLID YELLOW DOUBLE CENTERLINE
 - ⑤ 4" WHITE 30' SKIP 10' DASH
 - ⑥ 4" YELLOW 30' SKIP 10' DASH
 - ⑦ 8" SOLID WHITE LANE LINE
 - ⑧ 8" WHITE 4' SKIP 2' DASH
 - ⑨ 8" WHITE 6' SKIP 2' DASH
 - ⑩ 24" SOLID WHITE STOP BAR
 - ⑪ 12" SOLID WHITE DIAGONALS (ISLANDS)
 - ⑫ 12" SOLID WHITE DIAGONALS, 20' C-C
 - ⑬ 12" SOLID WHITE DIAGONALS, 30' C-C
 - ⑭ 12" SOLID YELLOW DIAGONALS, 30' C-C
 - ⑮ 12" SOLID WHITE DIAGONALS, 75' C-C
 - ⑯ 12" SOLID YELLOW DIAGONALS, 75' C-C

- SYMBOL LEGEND**
- [Hatched Box] WORK AREA
 - [Cross-hatched Box] TEMPORARY PAVEMENT PLACED THIS STAGE
 - [Solid Grey Box] TEMPORARY PAVEMENT PLACED PREVIOUS STAGE
 - [Diagonal Hatched Box] TEMPORARY PAVEMENT REMOVAL
 - [Arrow] TEMPORARY / EXISTING TRAFFIC FLOW
 - [Vertical Panel Symbol] VERTICAL PANEL
 - [Barricade Symbol] DRUM OR TY II BARRICADE W/ STEADY BURN BI-DIRECTIONAL LIGHT
 - [Directional Barricade Symbol] TY II DIRECTIONAL BARRICADE W/ STEADY BURN BI-DIRECTIONAL LIGHT
 - [Type III Barricade Symbol] TYPE III BARRICADE WITH FLASHING BI-DIRECTIONAL LIGHT
 - [Barrier Symbol] TEMPORARY CONCRETE BARRIER
 - [Attenuator Symbol] TEMPORARY IMPACT ATTENUATOR
 - [Ditch Flow Symbol] TEMPORARY DITCH FLOW
 - [Arrow Board Symbol] ARROW BOARD

THE SOUTH LEG OF CONTINENTAL DRIVE IS STARTED IN PRESTAGE 2 BUT MAY NOT BE COMPLETED PRIOR TO FOREST HILLS ROAD BEING COMPLETED IN THE SAME STAGE. PRESTAGE 2A WORK AT KIMBER CANNOT BEGIN UNTIL THE SOUTH LEG OF CONTINENTAL IS OPEN.



USER NAME = rgoertz	DESIGNED - RG	REVISED -
PLOT SCALE = 100.0000' / 1"	DRAWN - TRF	REVISED -
PLOT DATE = 7/26/2013	CHECKED - CMS	REVISED -
	DATE - APRIL 30, 2013	REVISED -

STATE OF ILLINOIS
 DEPARTMENT OF TRANSPORTATION

**STAGING PLAN - PRESTAGE 2A
 IL 173**

SCALE: 1" = 50'	SHEET NO. OF SHEETS	STA. 1027+00 TO STA. 1040+00
-----------------	---------------------	------------------------------

F.A.P. RTE. 303	SECTION 129R	COUNTY WINNEBAGO	TOTAL SHEETS 968	SHEET NO. 287
CONTRACT NO. 64988				
FED. ROAD DIST. NO. 2 (ILLINOIS) FED. AID PROJECT				