

FILE NAME = S:\Projects\2012 Jobs\12-95-S10206 Upchurch Loves Park 02 Ph II\Cad\CADD Sheets\2012\93510-S3-IL173.dgn
 MODEL = \$MODEL\$
 PLOT DRIVER = \$PLTDRVS\$

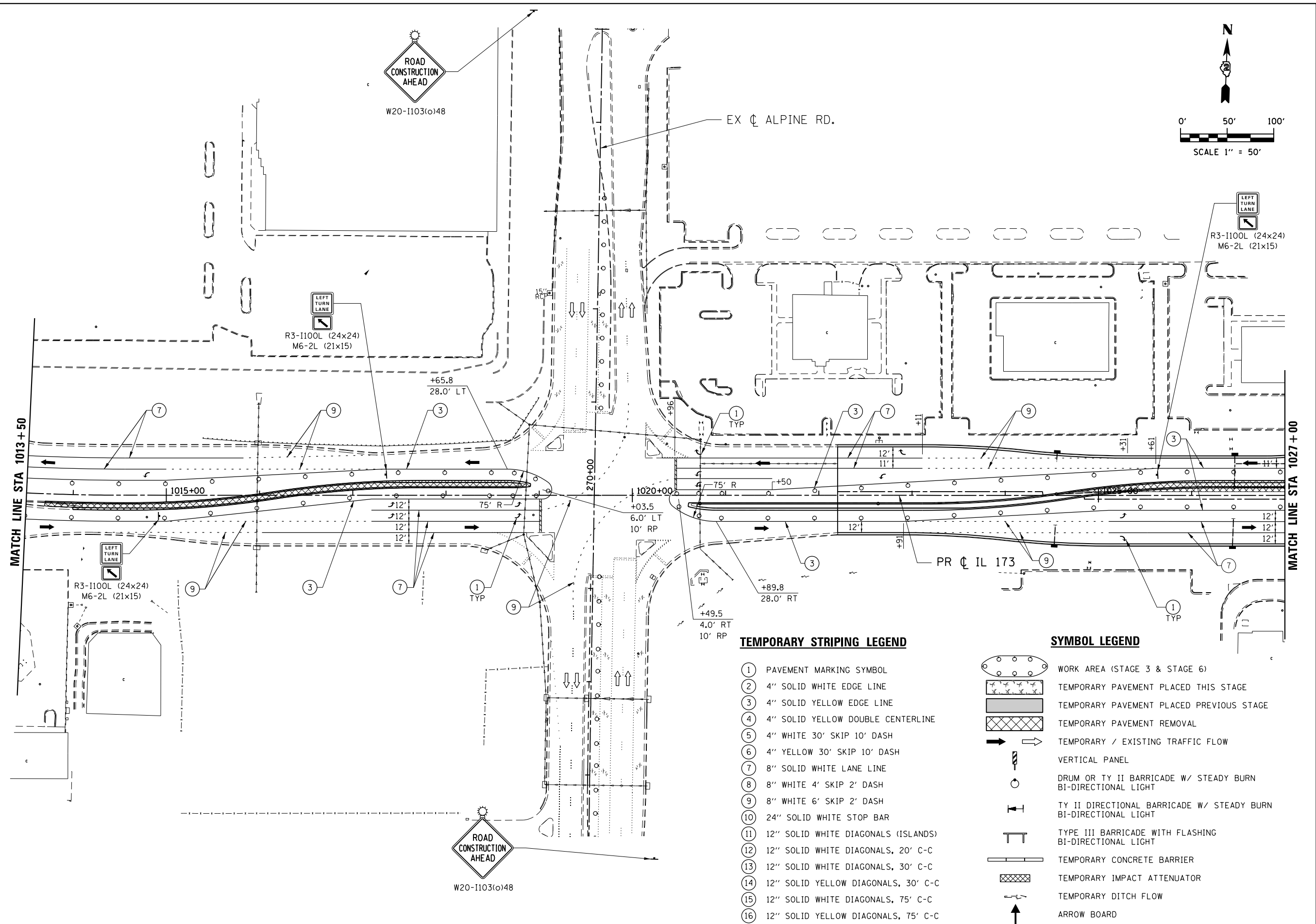


| | | |
|-----------------------------|-----------------------|-----------|
| USER NAME = rgoertz | DESIGNED - RG | REVISED - |
| | DRAWN - TRF | REVISED - |
| PLOT SCALE = 100.0000' / 1" | CHECKED - CMS | REVISED - |
| PLOT DATE = 7/26/2013 | DATE - APRIL 30, 2013 | REVISED - |

**STATE OF ILLINOIS
 DEPARTMENT OF TRANSPORTATION**

| | | | |
|--|---------------------|------------------------------|--|
| STAGING PLAN - STAGE 3 IL 173 | | | |
| SCALE: 1" = 50' | SHEET NO. OF SHEETS | STA. 1013+50 TO STA. 1027+00 | |

| | | | | |
|---|--------------|------------------|------------------|---------------|
| F.A.P. RTE. 303 | SECTION 129R | COUNTY WINNEBAGO | TOTAL SHEETS 968 | SHEET NO. 314 |
| CONTRACT NO. 64988 | | | | |
| FED. ROAD DIST. NO. 2 ILLINOIS FED. AID PROJECT | | | | |



TEMPORARY STRIPING LEGEND

- ① PAVEMENT MARKING SYMBOL
- ② 4" SOLID WHITE EDGE LINE
- ③ 4" SOLID YELLOW EDGE LINE
- ④ 4" SOLID YELLOW DOUBLE CENTERLINE
- ⑤ 4" WHITE 30' SKIP 10' DASH
- ⑥ 4" YELLOW 30' SKIP 10' DASH
- ⑦ 8" SOLID WHITE LANE LINE
- ⑧ 8" WHITE 4' SKIP 2' DASH
- ⑨ 8" WHITE 6' SKIP 2' DASH
- ⑩ 24" SOLID WHITE STOP BAR
- ⑪ 12" SOLID WHITE DIAGONALS (ISLANDS)
- ⑫ 12" SOLID WHITE DIAGONALS, 20' C-C
- ⑬ 12" SOLID WHITE DIAGONALS, 30' C-C
- ⑭ 12" SOLID YELLOW DIAGONALS, 30' C-C
- ⑮ 12" SOLID WHITE DIAGONALS, 75' C-C
- ⑯ 12" SOLID YELLOW DIAGONALS, 75' C-C

SYMBOL LEGEND

- WORK AREA (STAGE 3 & STAGE 6)
- TEMPORARY PAVEMENT PLACED THIS STAGE
- TEMPORARY PAVEMENT PLACED PREVIOUS STAGE
- TEMPORARY PAVEMENT REMOVAL
- TEMPORARY / EXISTING TRAFFIC FLOW
- VERTICAL PANEL
- DRUM OR TY II BARRICADE W/ STEADY BURN BI-DIRECTIONAL LIGHT
- TY II DIRECTIONAL BARRICADE W/ STEADY BURN BI-DIRECTIONAL LIGHT
- TYPE III BARRICADE WITH FLASHING BI-DIRECTIONAL LIGHT
- TEMPORARY CONCRETE BARRIER
- TEMPORARY IMPACT ATTENUATOR
- TEMPORARY DITCH FLOW
- ARROW BOARD

