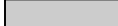

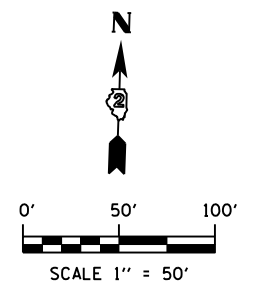
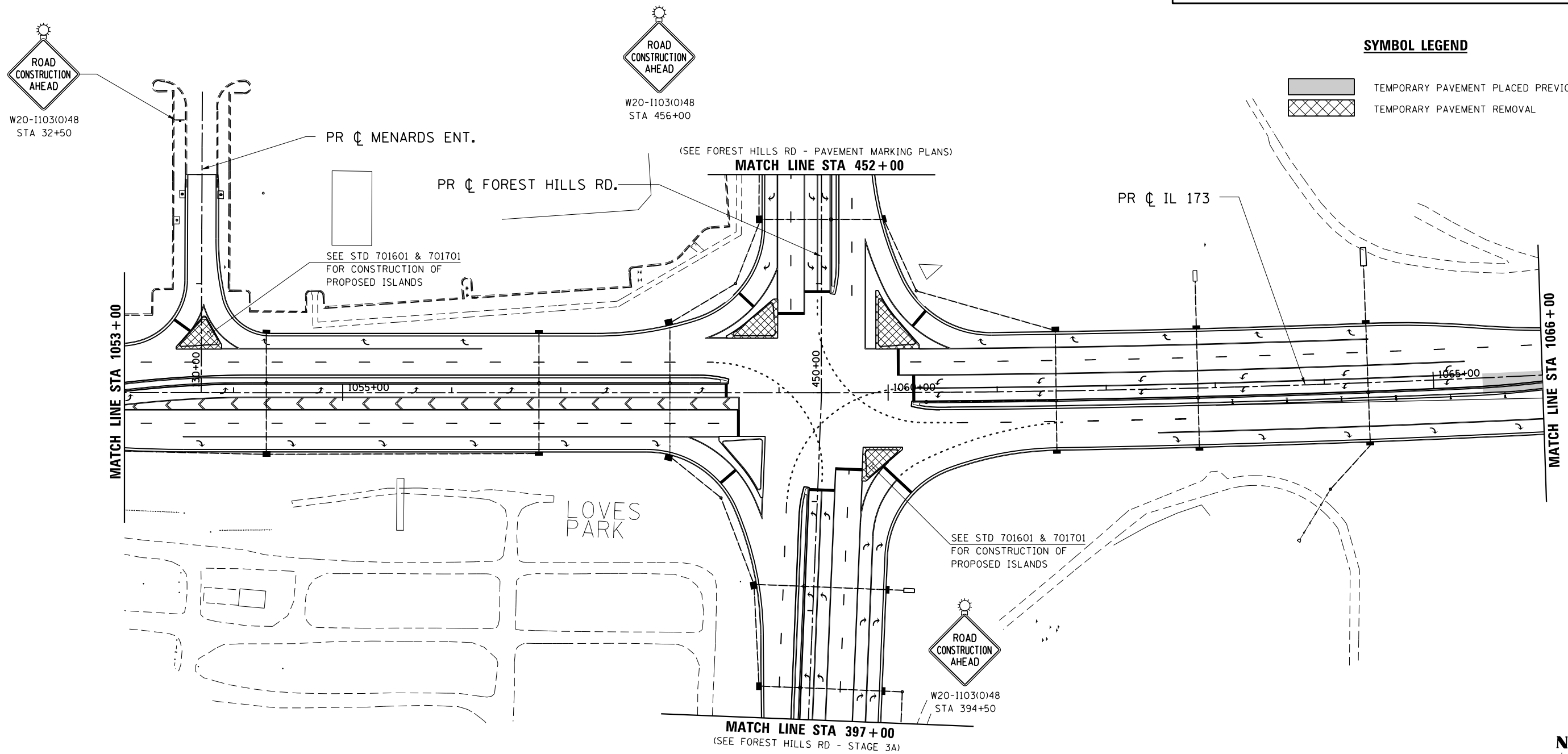


CONTRACTOR SHALL MAINTAIN ALL LANES OPEN TO TRAFFIC ON WEEKENDS.

PAVEMENT MARKINGS SHOWN ARE EITHER PERMANENT OR TEMPORARY, DEPENDANT ON TIME AND/OR WEATHER CONDITIONS, AS DIRECTED BY THE ENGINEER. STAGE 3A WILL BE COMPLETED WITH ALL PAVEMENT MARKINGS PLACED IN FINAL LOCATIONS FROM THE BEGINNING OF THE PROJECT TO APPROXIMATELY STA. 1066+00.

**SYMBOL LEGEND**

-  TEMPORARY PAVEMENT PLACED PREVIOUS STAGE
-  TEMPORARY PAVEMENT REMOVAL



FILE NAME = S:\Projects\2012 JOBS\12-95-S10206 Upchurch Loves Park 02 Ph. II\Cad\CADD Sheets\208793510.S3A-IL173.06.dgn  
 MODEL = \$MODEL\$  
 PLOT DRIVER = \$PLTDVRS\$



USER NAME = rgoertz	DESIGNED - RG	REVISED -
	DRAWN - TRF	REVISED -
PLOT SCALE = 100.0000' / in.	CHECKED - CMS	REVISED -
PLOT DATE = 7/26/2013	DATE - APRIL 30, 2013	REVISED -

**STATE OF ILLINOIS  
 DEPARTMENT OF TRANSPORTATION**

**STAGING PLAN - STAGE 3A  
 IL 173**

SCALE: 1" = 50' SHEET NO. OF SHEETS STA. 1053+00 TO STA. 1066+00

F.A.P. RTE.	SECTION	COUNTY	TOTAL SHEETS	SHEET NO.
303	129R	WINNEBAGO	968	327
CONTRACT NO. 64988				
FED. ROAD DIST. NO. 2 ILLINOIS FED. AID PROJECT				