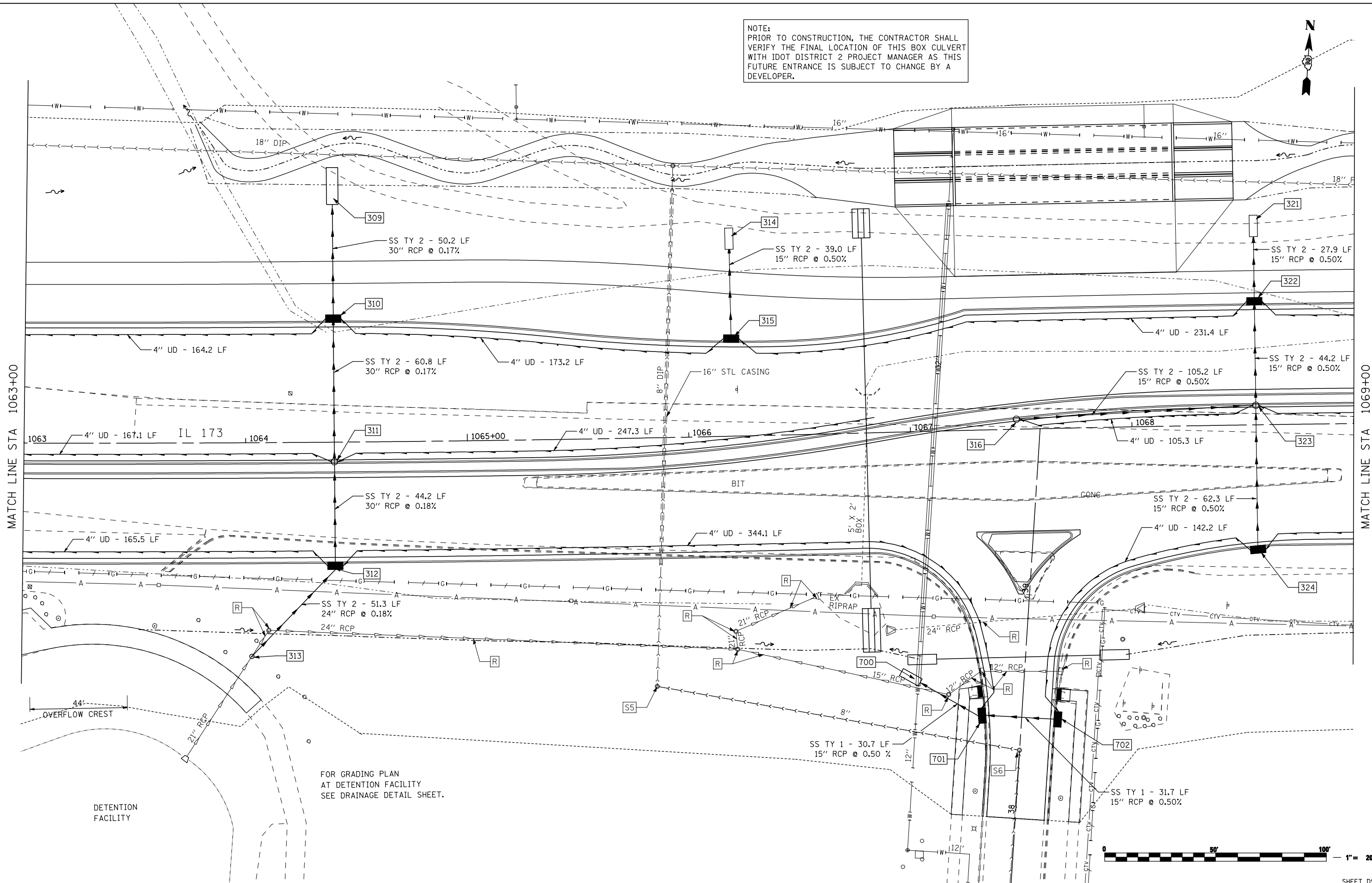


NOTE:
PRIOR TO CONSTRUCTION, THE CONTRACTOR SHALL
VERIFY THE FINAL LOCATION OF THIS BOX CULVERT
WITH IDOT DISTRICT 2 PROJECT MANAGER AS THIS
FUTURE ENTRANCE IS SUBJECT TO CHANGE BY A
DEVELOPER.



FOR GRADING PLAN
AT DETENTION FACILITY
SEE DRAINAGE DETAIL SHEET.

FILE NAME =
...\\CADD SHEETS\200793DRPLN09.dgn
THE UPCHURCH GROUP, INC.

USER NAME = Elgin 110
PLOT SCALE = 40.0000 ' / IN.
PLOT DATE = 5/6/2013 1:51:05 PM

DESIGNED - MJS
DRAWN - RMH
CHECKED - RLH
DATE - APRIL 30, 2013

REVISED -
REVISED -
REVISED -
REVISED -

**STATE OF ILLINOIS
DEPARTMENT OF TRANSPORTATION**

**DRAINAGE AND UTILITY PLANS
IL 173 FROM ALPINE ROAD TO I-90**
SCALE: 1"=20' SHEET NO. OF SHEETS STA. 1063+00 TO STA. 1069+00

F.A.P. RTE.	SECTION	COUNTY	TOTAL SHEETS	SHEET NO.
303	129R	WINNEBAGO	968	417
			CONTRACT NO. 64988	
ILLINOIS FED. AID PROJECT				

SHEET D9