

WATER MAIN PIPES

- WM-P3
169 LF OF 16" WATER MAIN
- WM-P4
5 LF OF 6" WATER MAIN
RJT PIPE
- WM-P5
58 LF OF 16" WATER MAIN
RJT PIPE
STA 1040+38 TO STA 1041+00

WATER MAIN FITTINGS

- WM-F4
16" X 6" TEE
STA 1040+72, 59' LT
- WM-F5
16" X 45° BEND
STA 1040+86, 59' LT
- WM-F6
16" X 45° BEND
STA 1040+90, 56' LT
- WM-F7
16" SLEEVE
STA 1041+00, 56' LT

WATER MAIN LINE STOPS

- WM-LS2
WATER MAIN LINE STOP, 16"
STA 1041+06, 56' LT

WATER MAIN VALVE VAULTS

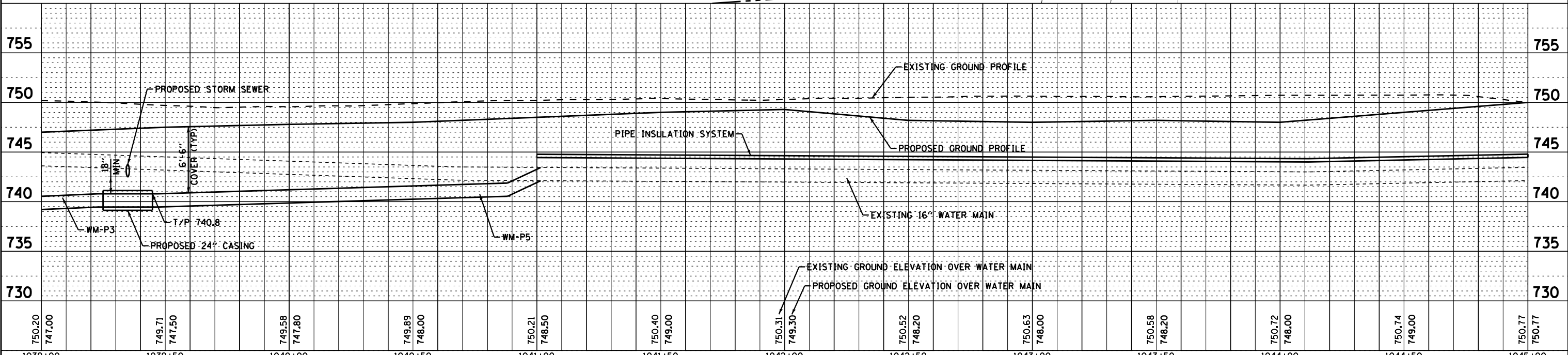
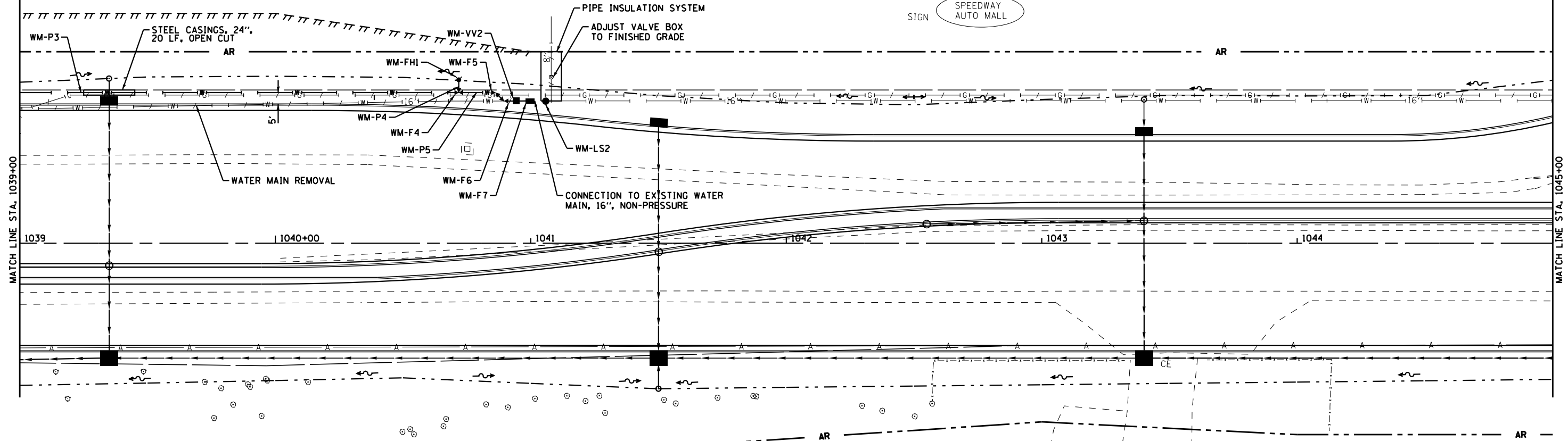
- WM-VV2
BUTTERFLY VALVE, 16"
VALVE VAULT, TYPE A, 5' DIA, TYPE 1, CL
STA 1040+94, 56' LT

FIRE HYDRANTS

- WM-FH1
W/AUXILIARY VALVE AND BOX
STA 1040+72, 64' LT

NOTE:

EXCAVATE TO 12" OVER TOP OF EXISTING WATER MAIN AND INSTALL 4" RIGID INSULATION STA 1041+00 TO STA 1045+00; STA 1041+07, 46' LT TO 75' LT (8' WIDE)



COPYRIGHT © 2012 BY BAXTER & WOODMAN, INC.
 STATE OF ILLINOIS - PROFESSIONAL DESIGN FIRM
 LICENSE NO. 184-001274, EXPIRES 4/30/2015
 PROJECT: 110789-WaterMain-PP4.sht



DESIGNED - MPK	REVISED -
DRAWN - KAR	REVISED -
CHECKED - MPK	REVISED -
DATE - APRIL 30, 2013	FILE - 110789-WaterMain-PP4.sht

**STATE OF ILLINOIS
DEPARTMENT OF TRANSPORTATION**

**NORTH PARK PUBLIC WATER DISTRICT
ROUTE 173
WATER MAIN RELOCATION**

SCALE: H: 1"=20' V: 1"=5' STA. 1039+00 TO STA. 1045+00

F.A.P. RTE. 303	SECTION 129R	COUNTY WINNEBAGO	TOTAL SHEETS 968	SHEET NO. 458
CONTRACT NO. 64988			ILLINOIS FED. AID PROJECT	