

WATER MAIN LINE STOPS WATER MAIN PIPES WATER MAIN PIPES WATER GATE VALVES WATER VALVE VAULTS WATER MAIN FITTINGS WATER MAIN FITTINGS WATER MAIN FITTINGS WATER MAIN FITTINGS WATER MAIN FITTINGS

WM-LS3
WATER MAIN LINE STOP, 16"
STA 1066+37, 139' LT

WM-P8
65' LF OF 16" WATER MAIN
RJT PIPE
STA 1066+30 TO STA 1066+89

WM-P8A
216' LF OF 16" WATER MAIN

WM-P8B
115' LF OF 12" WATER MAIN
RJT PIPE

WM-P8C
7' LF OF 10" WATER MAIN
RJT PIPE

WM-GV1
12" GATE VALVE
STA 1066+65, 146' LT

WM-GV2
10" GATE VALVE
STA 1067+35, 152' LT

WM-VV3
VALVE VAULT, TYPE A,
6' DIA, TYPE 1, CL
STA 1066+30, 140' LT

WM-F10
16" X 45° BEND
ROD CAP TO MAIN
STA 1066+50, 139' LT

WM-F11
16" X 45° BEND
STA 1066+30, 145' LT

WM-F12
16" X 45° BEND
STA 1066+35, 149' LT

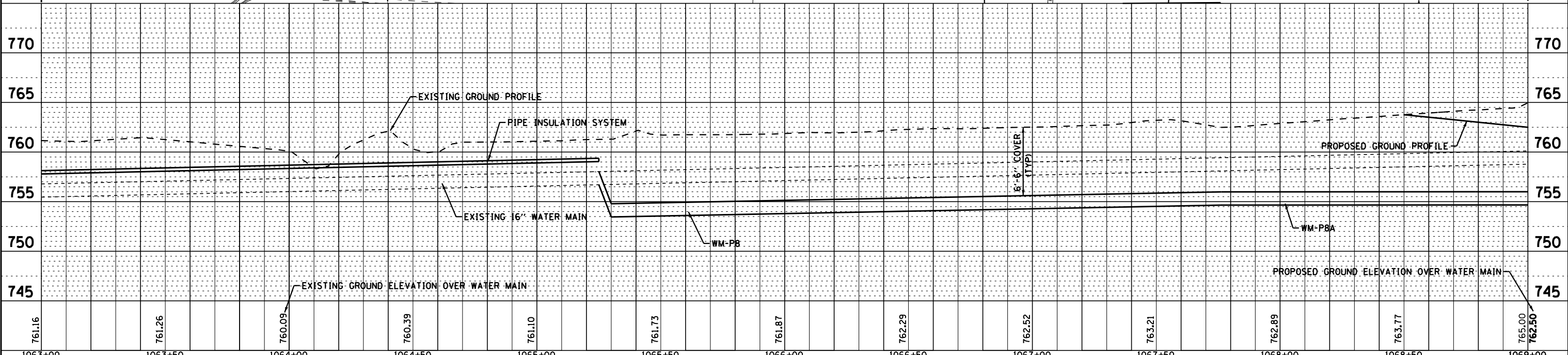
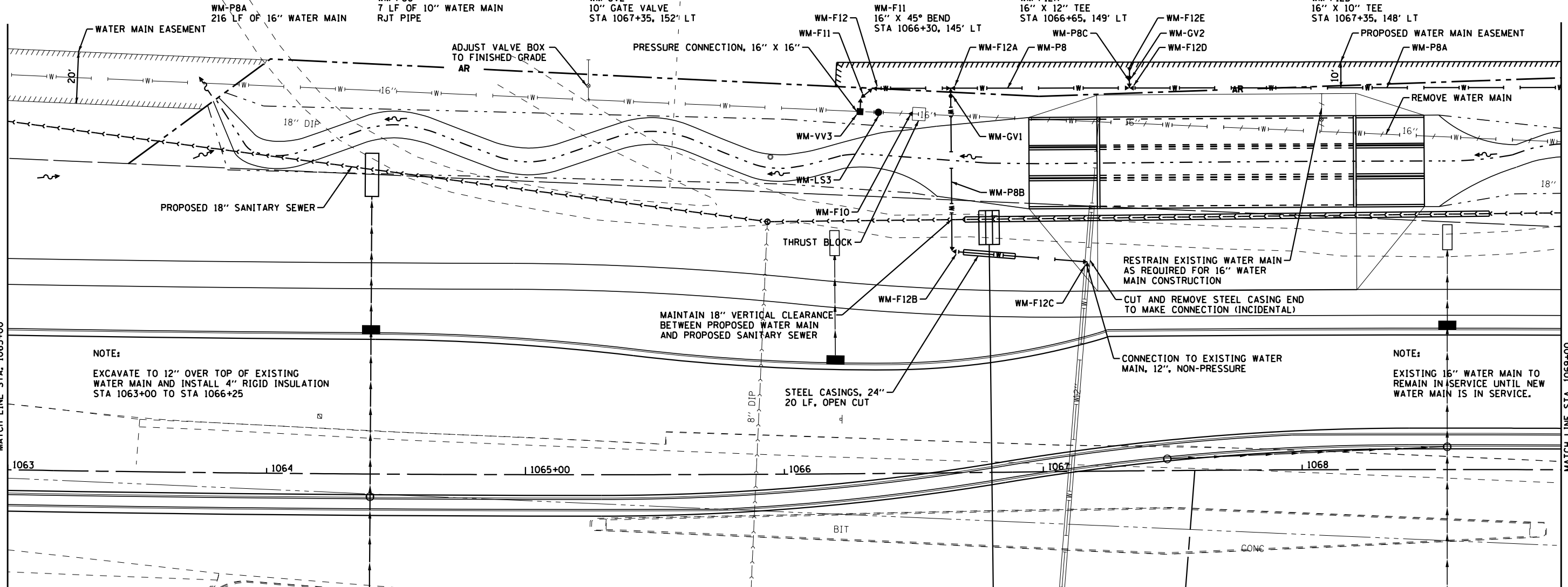
WM-F12A
16" X 12" TEE
STA 1066+65, 149' LT

WM-F12B
12" X 90° BEND
STA 1066+65, 86' LT

WM-F12C
12" X 90° BEND
STA 1067+18, 81' LT

WM-F12D
16" X 10" TEE
STA 1067+35, 148' LT

WM-F12E
10" CAP
ROD CAP TO MAIN
STA 1067+35, 155' LT



COPYRIGHT © 2012 BY BAXTER & WOODMAN, INC.
 STATE OF ILLINOIS - PROFESSIONAL DESIGN FIRM
 LICENSE NO. 044-00127 EXPIRES 4/30/2013
 PROJECT NO. 12067-003 3/26/13



DESIGNED - MPK	REVISED -
DRAWN - KAR	REVISED -
CHECKED - MPK	REVISED -
DATE - APRIL 30, 2013	FILE - \$FILES\$

STATE OF ILLINOIS
DEPARTMENT OF TRANSPORTATION

NORTH PARK PUBLIC WATER DISTRICT
ROUTE 173
WATER MAIN RELOCATION

SCALE: H: 1"=20' V: 1"=5' STA. 1063+00 TO STA. 1069+00

F.A.P. RTE. 303	SECTION 129R	COUNTY WINNEBAGO	TOTAL SHEETS 968	SHEET NO. 462
CONTRACT NO. 64988			ILLINOIS FED. AID PROJECT	