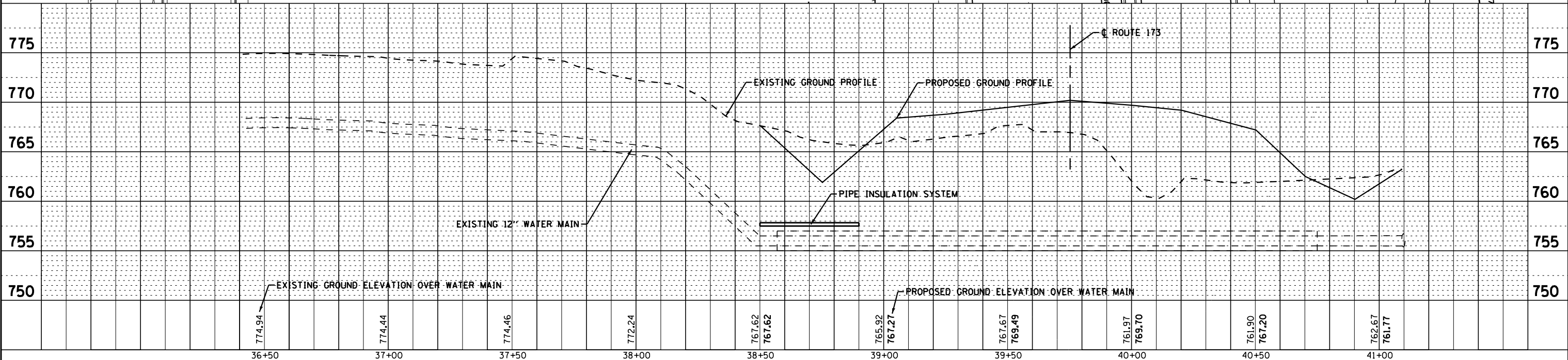


NOTE:
EXCAVATE TO 12" OVER TOP OF EXISTING WATER MAIN AND INSTALL 4" RIGID INSULATION STA 38+50 TO STA 38+90



COPYRIGHT © 2012 BY BAXTER & WOODMAN, INC.
 STATE OF ILLINOIS - PROFESSIONAL DESIGN FIRM
 LICENSE NO. 084-00127-XPRES-4/30/2013
 PROJECT NO. 12067-003 34942 001



DESIGNED - MPK	REVISED -
DRAWN - KAR	REVISED -
CHECKED - MPK	REVISED -
DATE - APRIL 30, 2013	FILE - \$FILES\$

**STATE OF ILLINOIS
DEPARTMENT OF TRANSPORTATION**

**NORTH PARK PUBLIC WATER DISTRICT
OSF ENTRANCE
WATER MAIN RELOCATION**

SCALE: H: 1"=20' V: 1"=5'
STA. 36+30 TO STA. 39+76

F.A.P. RTE. 303	SECTION 129R	COUNTY WINNEBAGO	TOTAL SHEETS 968	SHEET NO. 478
FED. ROAD DIST. NO. ILLINOIS FED. AID PROJECT			CONTRACT NO. 64988	