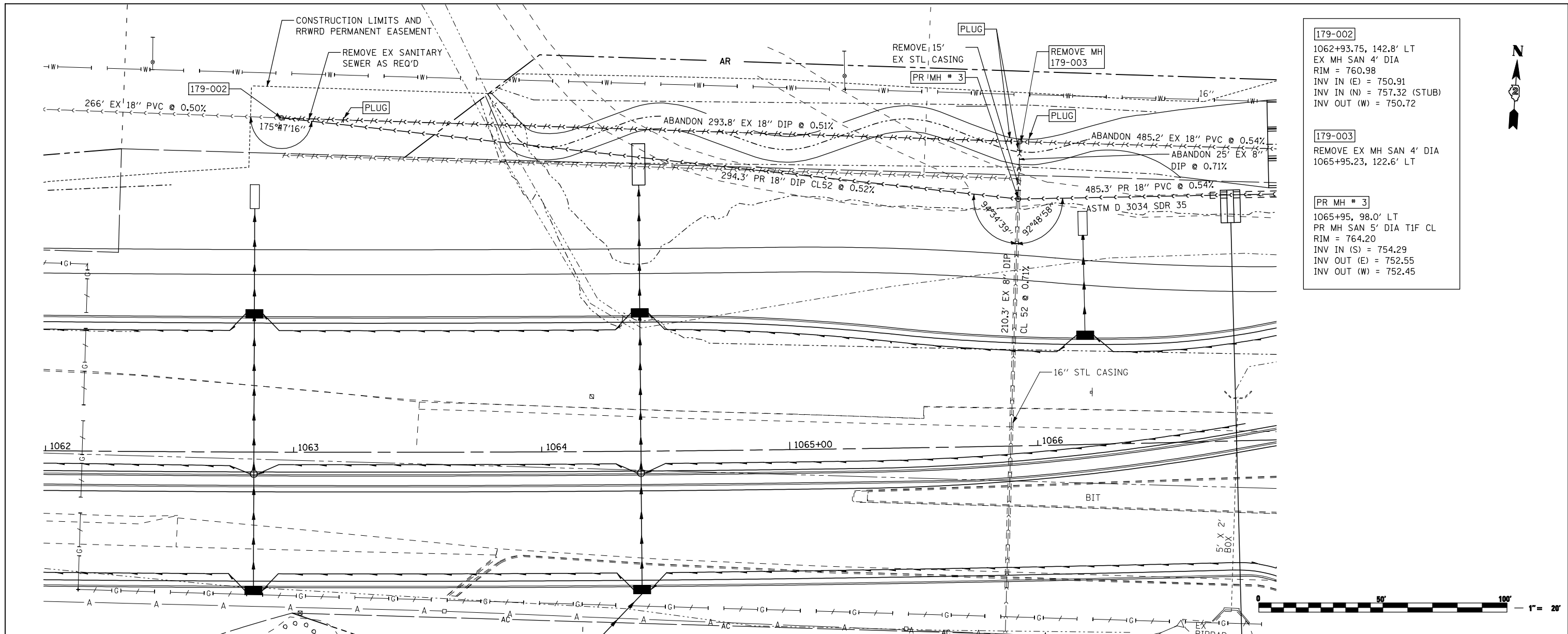


PLAN	SURVEYED	DATE
NOTE BOOK NO.	PLOTTED	BY
	NOT CHECKED	
	RT. OF WAY CHECKED	
	CAAD FILE NAME	

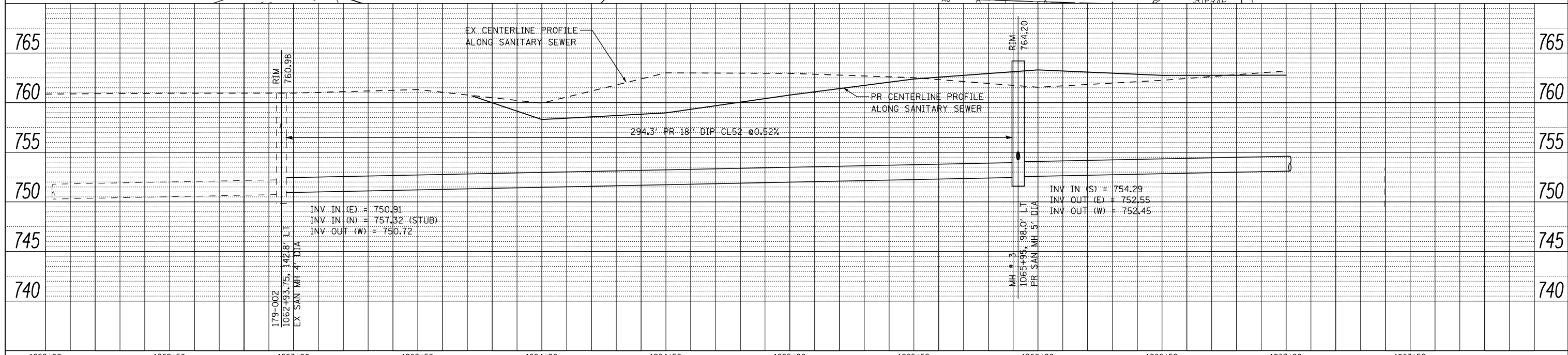
PROFILE	SURVEYED	DATE
NOTE BOOK NO.	PLOTTED	BY
	NOT CHECKED	
	STRUCTURE NOTATNS CHKD	



179-002
1062+93.75, 142.8' LT
EX MH SAN 4' DIA
RIM = 760.98
INV IN (E) = 750.91
INV IN (N) = 757.32 (STUB)
INV OUT (W) = 750.72

179-003
REMOVE EX MH SAN 4' DIA
1065+95.23, 122.6' LT

PR MH # 3
1065+95, 98.0' LT
PR MH SAN 5' DIA T1F CL
RIM = 764.20
INV IN (S) = 754.29
INV OUT (E) = 752.55
INV OUT (W) = 752.45



FILE NAME = ... \CAADD SHEETS\Z00793SANPLN01.dgn	USER NAME = Elgin 110	DESIGNED - MW	REVISED -	STATE OF ILLINOIS DEPARTMENT OF TRANSPORTATION	SANITARY SEWER RELOCATION PLANS IL 173 FROM ALPINE ROAD TO I-90	F.A.P. RTE. 303	SECTION 129R	COUNTY WINNEBAGO	TOTAL SHEETS 968	SHEET NO. 481	
PLOT SCALE = 40.0000' / IN.	CHECKED - MJS	REVISOR -	SCALE: 1"=20'			SHEET NO. OF SHEETS	STA. 1062+00 TO STA. 1067+00	CONTRACT NO. 64988		ILLINOIS FED. AID PROJECT	
PLOT DATE = 5/7/2013 11:47:30 AM	DATE - APRIL 30, 2013	REVISOR -									
THE UPCHURCH GROUP, INC.											