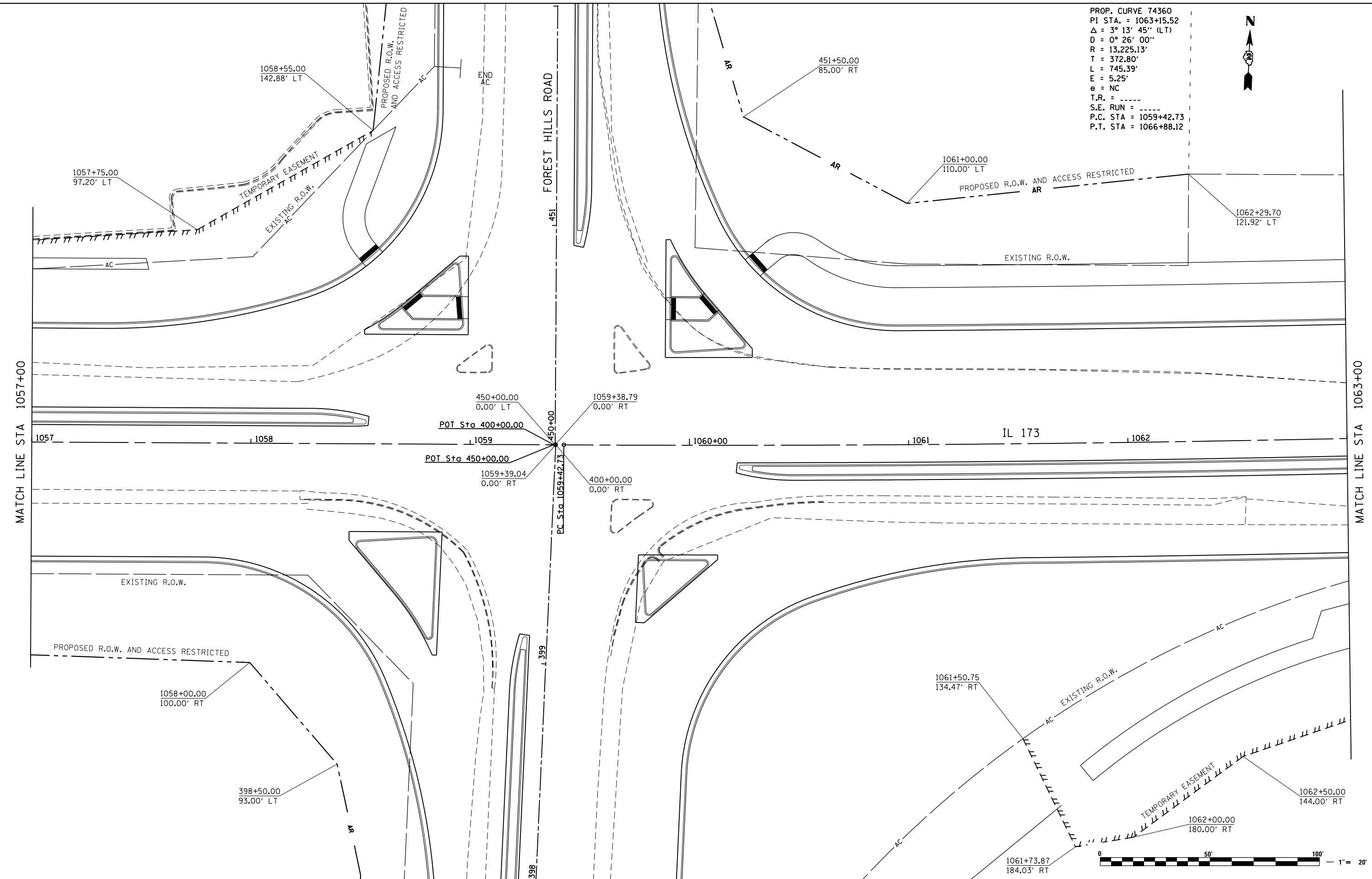


PROP. CURVE 74360  
 PI STA. = 1063+15.52  
 $\Delta = 3^{\circ} 13' 45''$  (LT)  
 $D = 0^{\circ} 26' 00''$   
 $R = 13,225.13'$   
 $T = 372.80'$   
 $L = 745.39'$   
 $E = 5.25'$   
 $e = NC$   
 T.R. = -----  
 S.E. RUN = -----  
 P.C. STA = 1059+42.73  
 P.T. STA = 1066+88.12



FILE NAME = Z00793RWE50.dgn  
 MODEL = Untitled Sheet  
 PLOT DRIVER = Vb...PDF...11x17.pltcf9



USER NAME = rgoertz	DESIGNED - KEC	REVISED -
	DRAWN - KEC	REVISED -
PLOT SCALE = 40.0000' / in.	CHECKED - MTM	REVISED -
PLOT DATE = 5/2/2013 11:02:07 AM	DATE - APRIL 30, 2013	REVISED -

**STATE OF ILLINOIS  
 DEPARTMENT OF TRANSPORTATION**

RIGHT OF WAY PLANS	
IL 173 FROM ALPINE ROAD TO I-90	
PROJECT	JOB NO.
SCALE: 1"=20'	SHEET NO. 7 OF 41 SHEETS
STA. 1057+00 TO STA. 1063+00	

F.A.P. RTE.	SECTION	COUNTY	TOTAL SHEETS	SHEET NO.
303	129R	WINNEBAGO	968	495
CONTRACT NO. 64988				
ILLINOIS FED. AID PROJECT				

