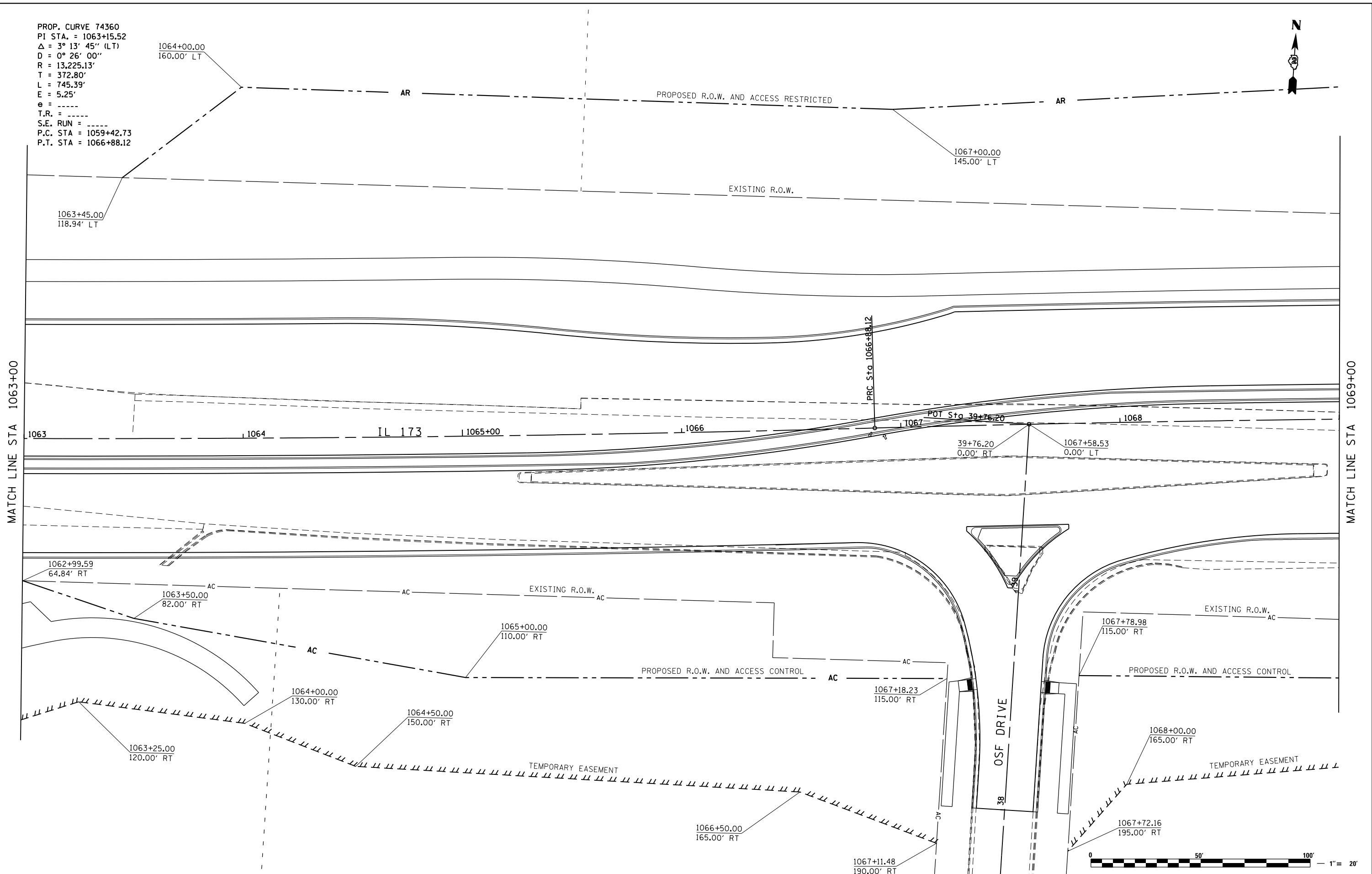


PROP. CURVE 74360
 PI STA. = 1063+15.52
 $\Delta = 3^\circ 13' 45''$ (LT)
 $D = 0^\circ 26' 00''$
 $R = 13,225.13'$
 $T = 372.80'$
 $L = 745.39'$
 $E = 5.25'$
 $e =$
 $T.R. =$
 $S.E. RUN =$
 $P.C. STA = 1059+42.73$
 $P.T. STA = 1066+88.12$



MATCH LINE STA 1063+00

MATCH LINE STA 1069+00



FILE NAME = Z00793RWES10.dgn
 MODEL = Untitled Sheet
 PLOT DRIVER = V8i_PDF_11x17.pltcf9



USER NAME = rgoertz	DESIGNED - KEC	REVISED -
PLOT SCALE = 40.0000' / in.	DRAWN - KEC	REVISED -
PLOT DATE = 5/2/2013 11:02:07 AM	CHECKED - MTM	REVISED -
	DATE - APRIL 30, 2013	REVISED -

**STATE OF ILLINOIS
 DEPARTMENT OF TRANSPORTATION**

RIGHT OF WAY PLANS	
IL 173 FROM ALPINE ROAD TO I-90	
PROJECT	JOB NO.
SCALE: 1"=20'	SHEET NO. 8 OF 41 SHEETS
STA. 1063+00 TO STA. 1069+00	

F.A.P. RTE.	SECTION	COUNTY	TOTAL SHEETS	SHEET NO.
303	129R	WINNEBAGO	968	496
CONTRACT NO. 64988				
ILLINOIS FED. AID PROJECT				