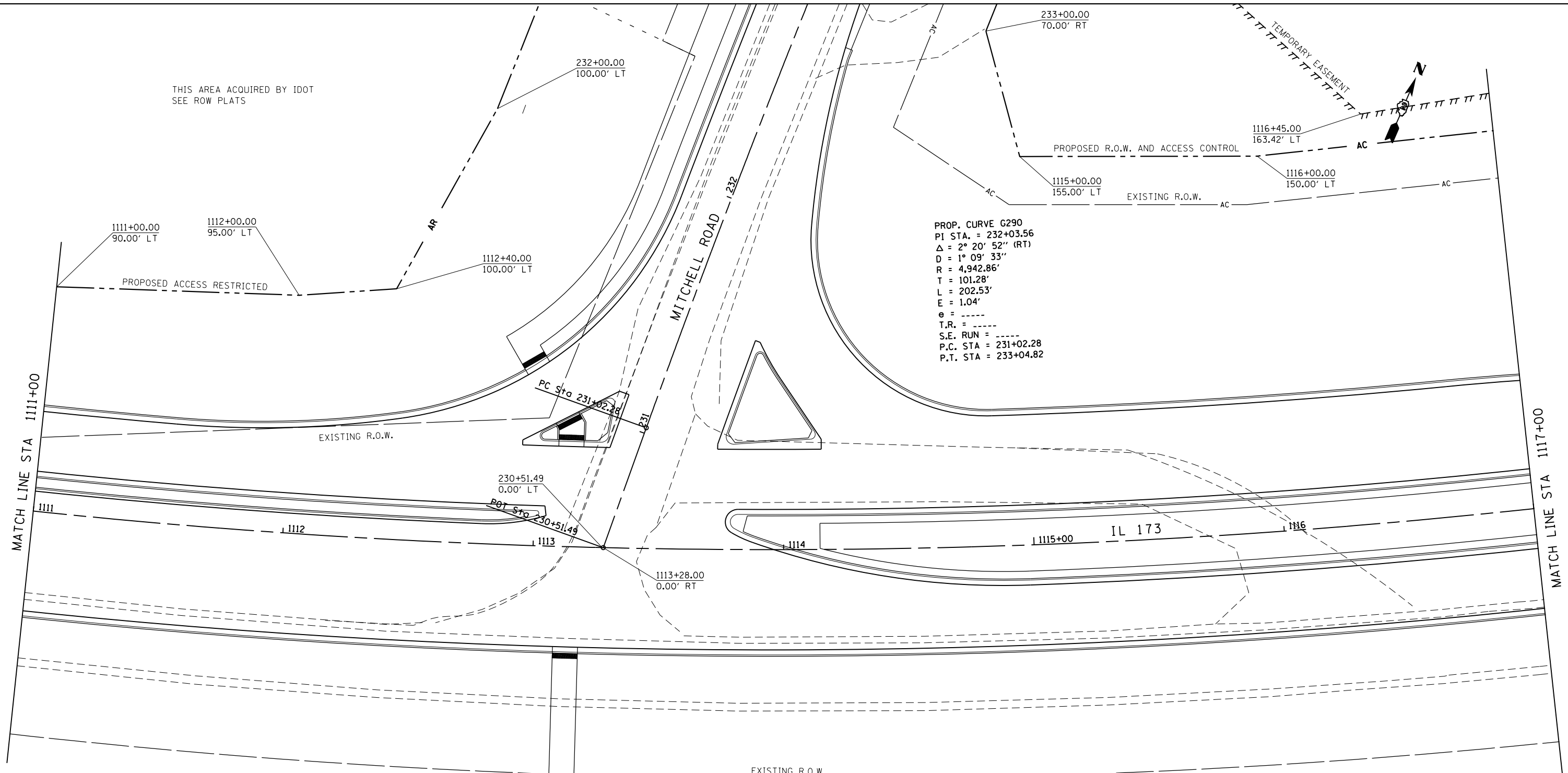


THIS AREA ACQUIRED BY IDOT  
SEE ROW PLATS



PROP. CURVE G290  
 PI STA. = 232+03.56  
 $\Delta = 2^\circ 20' 52''$  (RT)  
 $D = 1^\circ 09' 33''$   
 $R = 4,942.86'$   
 $T = 101.28'$   
 $L = 202.53'$   
 $E = 1.04'$   
 $e = \text{-----}$   
 $T.R. = \text{-----}$   
 $S.E. RUN = \text{-----}$   
 $P.C. STA = 231+02.28$   
 $P.T. STA = 233+04.82$

PROP. CURVE 74340  
 PI STA. = 1112+42.74  
 $\Delta = 34^\circ 56' 57''$  (LT)  
 $D = 2^\circ 01' 13''$   
 $R = 2,836.00'$   
 $T = 892.80'$   
 $L = 1,729.89'$   
 $E = 137.21'$   
 $e = \text{-----}$   
 $T.R. = \text{-----}$   
 $S.E. RUN = \text{-----}$   
 $P.C. STA = 1103+49.94$   
 $P.T. STA = 1120+79.83$



FILE NAME = Z00793RWES19.dgn  
 MODEL = Untitled Sheet  
 PLOT DRIVER = V8i\_PDF\_11x17.pltcf9



USER NAME = rgoertz	DESIGNED - KEC	REVISED -
PLOT SCALE = 40.0000' / in.	DRAWN - KEC	REVISED -
PLOT DATE = 5/2/2013 11:02:11 AM	CHECKED - MTM	REVISED -
	DATE - APRIL 30, 2013	REVISED -

**STATE OF ILLINOIS  
DEPARTMENT OF TRANSPORTATION**

RIGHT OF WAY PLANS	
IL 173 FROM ALPINE ROAD TO I-90	
PROJECT	JOB NO.
SCALE: 1"=20'	SHEET NO. 17 OF 41 SHEETS
STA. 1111+00 TO STA. 1117+00	

F.A.P. RTE.	SECTION	COUNTY	TOTAL SHEETS	SHEET NO.
303	129R	WINNEBAGO	968	505
CONTRACT NO. 64988				
ILLINOIS FED. AID PROJECT				