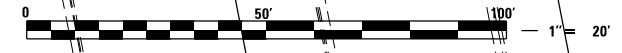
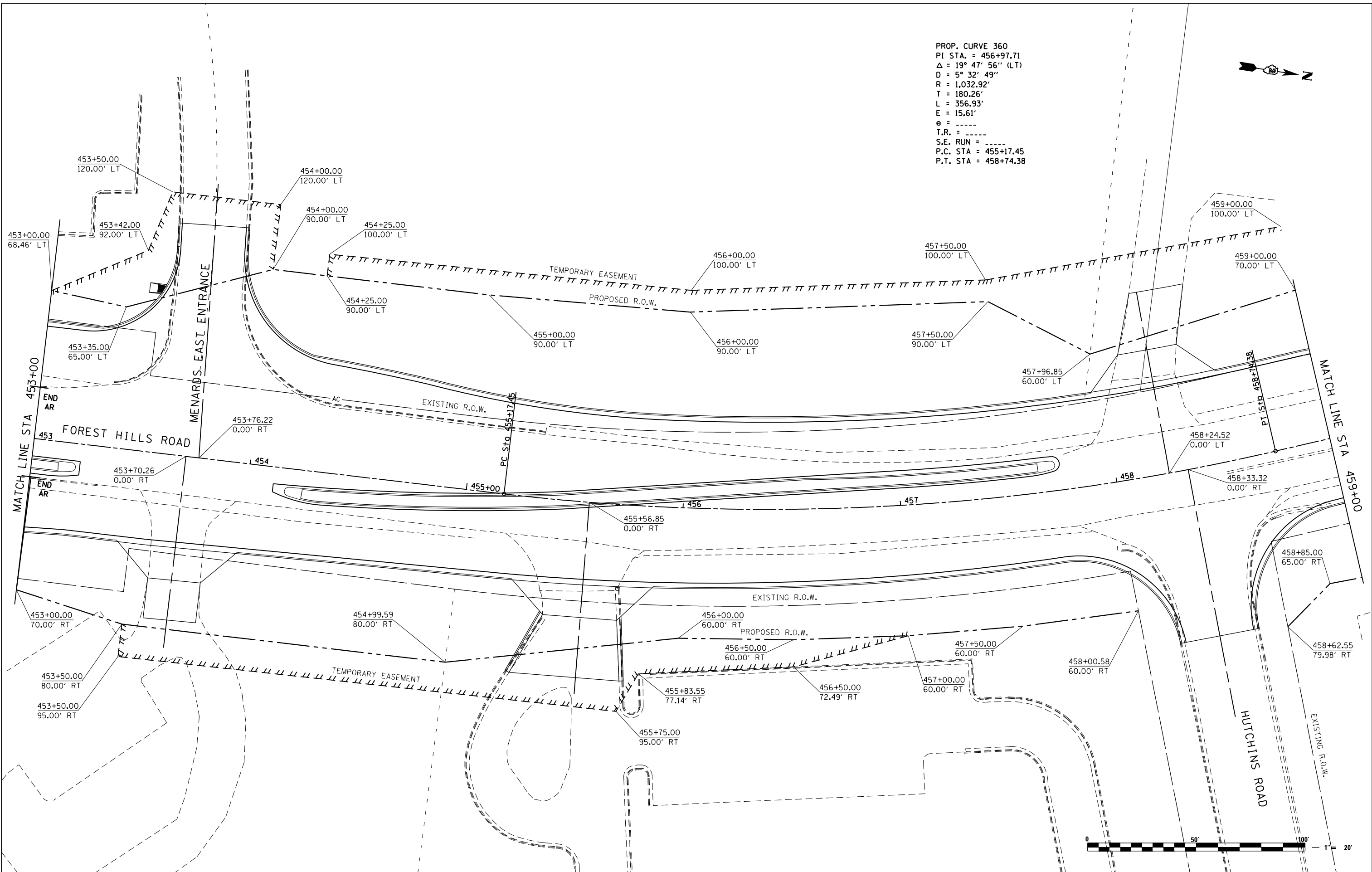


PROP. CURVE 360  
 PI STA. = 456+97.71  
 $\Delta = 19^\circ 47' 56''$  (LT)  
 $D = 5^\circ 32' 49''$   
 $R = 1,032.92'$   
 $T = 180.26'$   
 $L = 356.93'$   
 $E = 15.61'$   
 $e = \text{-----}$   
 $T.R. = \text{-----}$   
 $S.E. \text{ RUN} = \text{-----}$   
 $P.C. \text{ STA} = 455+17.45$   
 $P.T. \text{ STA} = 458+74.38$



FILE NAME = Z00793RWES35.dgn  
 MODEL = Untitled Sheet  
 PLOT DRIVER = Vb\_PDF\_11x17.pltcf9



USER NAME = rgoertz	DESIGNED - KEC	REVISED -
	DRAWN - KEC	REVISED -
PLOT SCALE = 40.0000' / in.	CHECKED - MTM	REVISED -
PLOT DATE = 5/2/2013 11:02:17 AM	DATE - APRIL 30, 2013	REVISED -

**STATE OF ILLINOIS  
 DEPARTMENT OF TRANSPORTATION**

**RIGHT OF WAY PLANS  
 FOREST HILLS ROAD**

PROJECT	JOB NO.
SHEET NO. 33 OF 41 SHEETS	STA. 453+00 TO STA. 459+00

F.A.P. RTE.	SECTION	COUNTY	TOTAL SHEETS	SHEET NO.
303	129R	WINNEBAGO	968	521
CONTRACT NO. 64988				
ILLINOIS FED. AID PROJECT				