



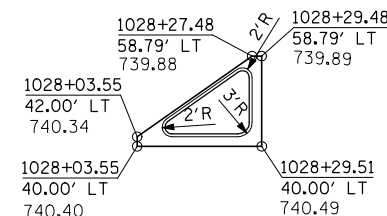
CORNER RADIUS DATA

PC = 1026+80.78, 40.00' LT
 C = 1026+80.78, 320.00' LT
 PCC = 1027+76.31, 56.80' LT
 C = 1027+49.01, 132.00' LT
 PT = 1028+29.01, 132.37' LT
 R1 = 280'
 R2 = 80'

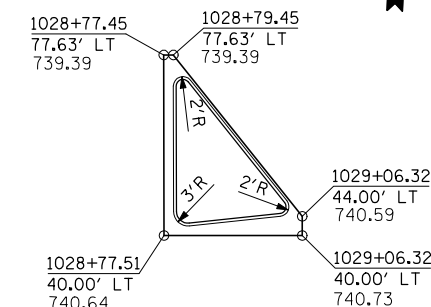
CORNER RADIUS DATA

PC = 1028+77.56, 207.59' LT
 C = 1032+17.56, 208.03' LT
 PCC = 1028+91.01, 113.32' LT
 C = 1029+72.65, 137.00' LT
 PT = 1029+72.65, 52.00' LT
 R1 = 340'
 R2 = 85'

DETAIL - NW ISLAND LAYOUT



DETAIL - NE ISLAND LAYOUT



MATCH LINE STA 1027+00

MATCH LINE STA 1033+00

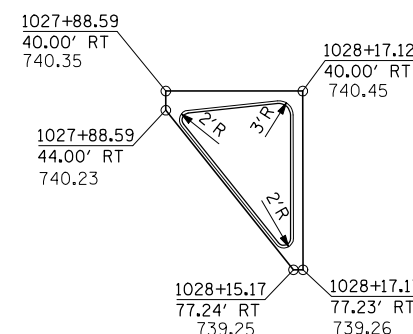
CORNER RADIUS DATA

PC = 1027+22.26, 52.00' RT
 C = 1027+22.26, 137.00' RT
 PCC = 1028+03.89, 113.31' RT
 C = 1024+77.36, 208.07' RT
 PT = 1028+17.36, 207.57' RT
 R1 = 85'
 R2 = 340'

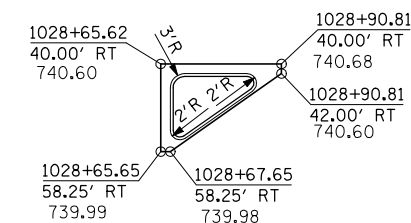
CORNER RADIUS DATA

PC = 1028+65.35, 131.68' RT
 C = 1029+45.35, 132.00' RT
 PCC = 1029+18.06, 56.80' RT
 C = 1030+13.59, 320.00' RT
 PT = 1030+13.59, 40.00' RT
 R1 = 80'
 R2 = 280'

DETAIL - SW ISLAND LAYOUT



DETAIL - SE ISLAND LAYOUT



NOTE:
 1. FOR MORE PC ISLAND AND MEDIANS INFORMATION SEE STANDARD 606301-04

CONTINENTAL DRIVE - SOUTH SIDE - CONT.



FILE NAME = ...load sheets\2007931VPPLN04.dgn	USER NAME = Elgin 110	DESIGNED - MJS	REVISED -	STATE OF ILLINOIS DEPARTMENT OF TRANSPORTATION	INTERSECTION AND VARIABLE WIDTH PAVEMENT PLANS IL 173 FROM ALPINE ROAD TO I-90			F.A.P. RTE. 303	SECTION 129R	COUNTY WINNEBAGO	TOTAL SHEETS 968	SHEET NO. 533
	THE UPCHURCH GROUP, INC.	PLOT SCALE = 40.00' / IN.	CHECKED - RMH		REVISED -	SCALE: 1"=20'	SHEET NO.	OF SHEETS	STA. 1027+00 TO STA. 1033+00	CONTRACT NO. 64988		ILLINOIS FED. AID PROJECT
	PLOT DATE = 5/1/2013 1:58:18 PM	DATE - APRIL 30, 2013	REVISED -									