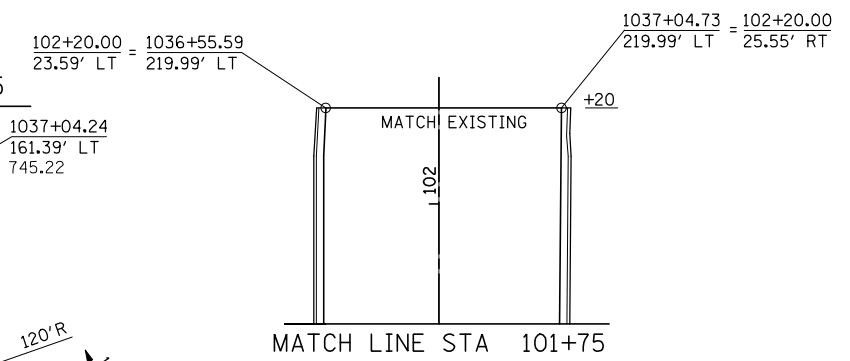


DETAIL - NE ISLAND LAYOUT

CORNER RADIUS DATA

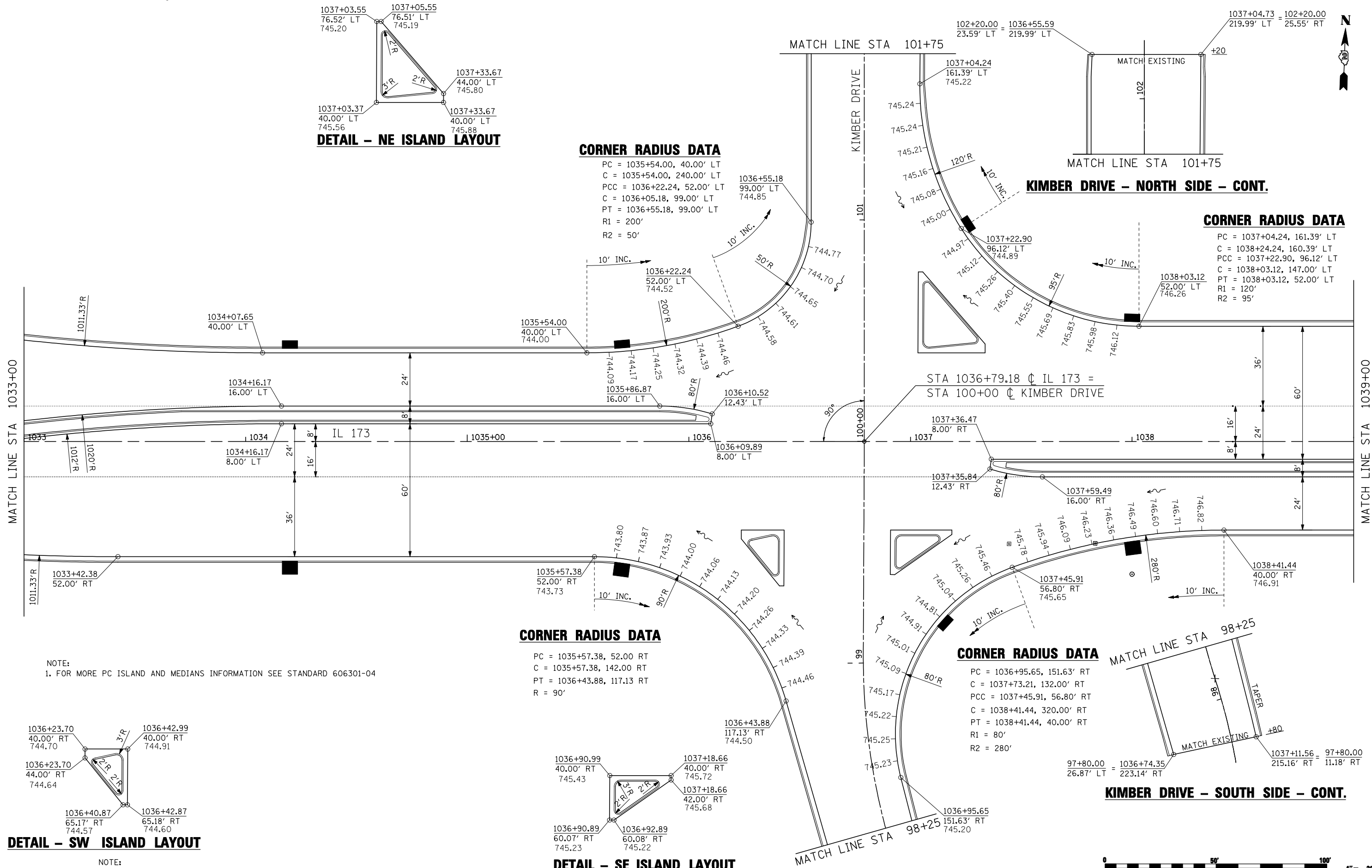
PC = 1035+54.00, 40.00' LT
 C = 1035+54.00, 240.00' LT
 PCC = 1036+22.24, 52.00' LT
 C = 1036+05.18, 99.00' LT
 PT = 1036+55.18, 99.00' LT
 R1 = 200'
 R2 = 50'



KIMBER DRIVE - NORTH SIDE - CONT.

CORNER RADIUS DATA

PC = 1037+04.24, 161.39' LT
 C = 1038+24.24, 160.39' LT
 PCC = 1037+22.90, 96.12' LT
 C = 1038+03.12, 147.00' LT
 PT = 1038+03.12, 52.00' LT
 R1 = 120'
 R2 = 95'

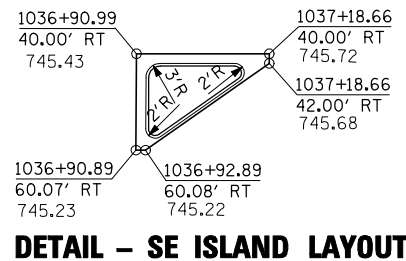


CORNER RADIUS DATA

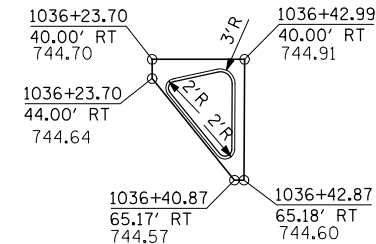
PC = 1035+57.38, 52.00 RT
 C = 1035+57.38, 142.00 RT
 PT = 1036+43.88, 117.13 RT
 R = 90'

CORNER RADIUS DATA

PC = 1036+95.65, 151.63' RT
 C = 1037+73.21, 132.00' RT
 PCC = 1037+45.91, 56.80' RT
 C = 1038+41.44, 320.00' RT
 PT = 1038+41.44, 40.00' RT
 R1 = 80'
 R2 = 280'



DETAIL - SE ISLAND LAYOUT



DETAIL - SW ISLAND LAYOUT

NOTE:
1. FOR MORE PC ISLAND AND MEDIANS INFORMATION SEE STANDARD 606301-04

NOTE:
1. FOR MORE PC ISLAND AND MEDIANS INFORMATION SEE STANDARD 606301-04



FILE NAME = ...\\oddd sheets\2007931VP\PLN05.dgn
THE UPCHURCH GROUP, INC.

USER NAME = Elgin 110	DESIGNED - MJS	REVISED -
PLOT SCALE = 40.0000' / IN.	DRAWN - LMP	REVISED -
PLOT DATE = 5/1/2013 1:58:21 PM	CHECKED - RMH	REVISED -
	DATE - APRIL 30, 2013	REVISED -

**STATE OF ILLINOIS
 DEPARTMENT OF TRANSPORTATION**

**INTERSECTION AND VARIABLE WIDTH PAVEMENT PLANS
 IL 173 FROM ALPINE ROAD TO I-90**

SCALE: 1"=20' SHEET NO. OF SHEETS STA. 1033+00 TO STA. 1039+00

F.A.P. RTE. 303	SECTION 129R	COUNTY WINNEBAGO	TOTAL SHEETS 968	SHEET NO. 534
ILLINOIS FED. AID PROJECT			CONTRACT NO. 64988	