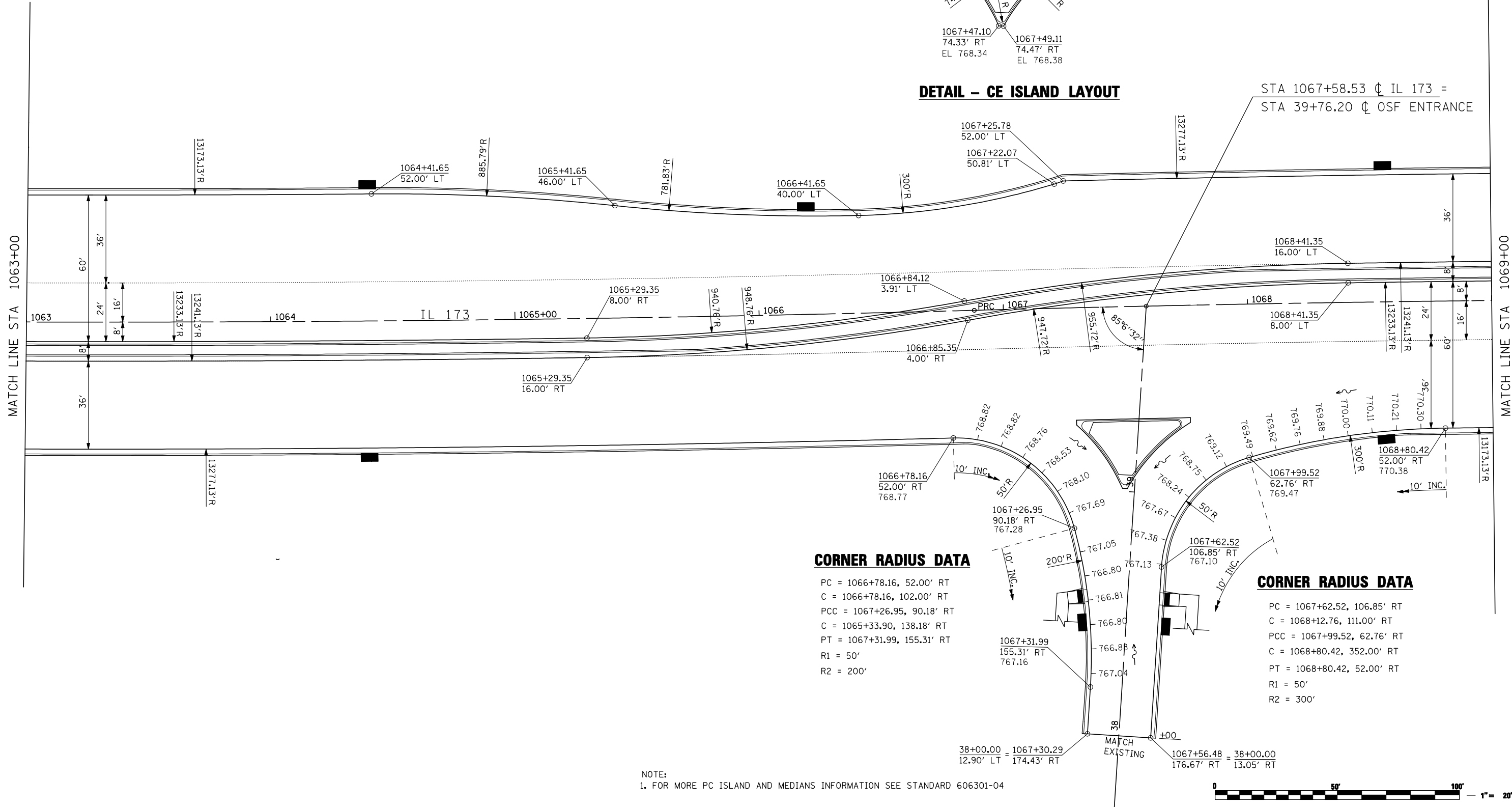


DETAIL - CE ISLAND LAYOUT

STA 1067+58.53 ϕ IL 173 =
STA 39+76.20 ϕ OSF ENTRANCE



CORNER RADIUS DATA

PC = 1066+78.16, 52.00' RT
 C = 1066+78.16, 102.00' RT
 PCC = 1067+26.95, 90.18' RT
 C = 1065+33.90, 138.18' RT
 PT = 1067+31.99, 155.31' RT
 R1 = 50'
 R2 = 200'

CORNER RADIUS DATA

PC = 1067+62.52, 106.85' RT
 C = 1068+12.76, 111.00' RT
 PCC = 1067+99.52, 62.76' RT
 C = 1068+80.42, 352.00' RT
 PT = 1068+80.42, 52.00' RT
 R1 = 50'
 R2 = 300'

NOTE:
 1. FOR MORE PC ISLAND AND MEDIANS INFORMATION SEE STANDARD 606301-04

FILE NAME = ...load sheets\2007931VPPLN10.dgn	USER NAME = Elgin 110	DESIGNED - MJS	REVISED -
		DRAWN - LMP	REVISED -
		CHECKED - RMH	REVISED -
		DATE - APRIL 30, 2013	REVISED -

**STATE OF ILLINOIS
 DEPARTMENT OF TRANSPORTATION**

INTERSECTION AND VARIABLE WIDTH PAVEMENT PLANS			
IL 173 FROM ALPINE ROAD TO I-90			
SCALE: 1"=20'	SHEET NO. OF SHEETS	STA. 1063+00 TO STA. 1069+00	

F.A.P. RTE. 303	SECTION 129R	COUNTY WINNEBAGO	TOTAL SHEETS 968	SHEET NO. 539
ILLINOIS FED. AID PROJECT				CONTRACT NO. 64988