



DETAIL - NW ISLAND LAYOUT

CORNER RADIUS DATA

PC = 1072+26.58, 52.00' LT
C = 1072+26.58, 352.00' LT
PCC = 1073+25.29, 69.26' LT
C = 1072+95.24, 154.00' LT
PT = 1073+84.20, 152.41' LT
R1 = 300'
R2 = 90'

DETAIL - NE ISLAND LAYOUT

CORNER RADIUS DATA

PC = 1074+83.80, 143.26' LT
C = 1075+78.73, 147.00' LT
PT = 1075+78.73, 52.00' LT
R = 95'

DETAIL - SE ISLAND LAYOUT

CORNER RADIUS DATA

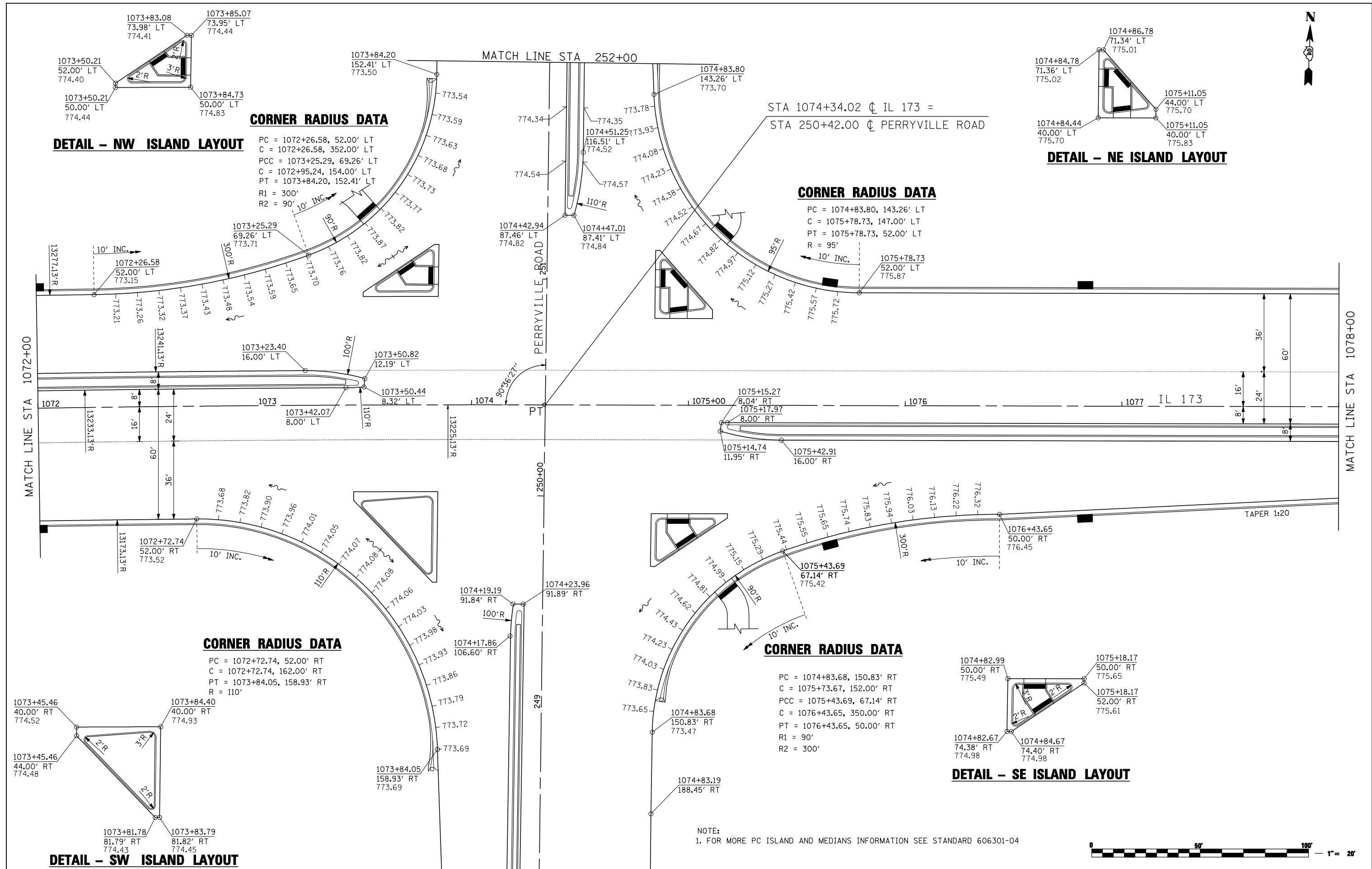
PC = 1074+83.68, 150.83' RT
C = 1075+73.67, 152.00' RT
PCC = 1075+43.69, 67.14' RT
C = 1076+43.65, 350.00' RT
PT = 1076+43.65, 50.00' RT
R1 = 90'
R2 = 300'

DETAIL - SW ISLAND LAYOUT

CORNER RADIUS DATA

PC = 1072+72.74, 52.00' RT
C = 1072+72.74, 162.00' RT
PT = 1073+84.05, 158.93' RT
R = 110'

NOTE:
1. FOR MORE PC ISLAND AND MEDIANS INFORMATION SEE STANDARD 606301-04



FILE NAME = ...load sheets\2007931VPLN12.dgn	USER NAME = Elgin 110	DESIGNED - MJS	REVISED -	STATE OF ILLINOIS DEPARTMENT OF TRANSPORTATION	INTERSECTION AND VARIABLE WIDTH PAVEMENT PLANS IL 173 FROM ALPINE ROAD TO I-90	F.A.P. RTE. = 303	SECTION = 129R	COUNTY = WINNEBAGO	TOTAL SHEETS = 968	SHEET NO. = 541
	PLOT SCALE = 40.0000' / IN.	CHECKED - RMH	REVISED -			SCALE: 1"=20'	SHEET NO. OF SHEETS	STA. 1072+00 TO STA. 1078+00	CONTRACT NO. 64988	
THE UPCHURCH GROUP, INC.	PLOT DATE = 5/1/2013 1:58:35 PM	DATE = APRIL 30, 2013	REVISED -							