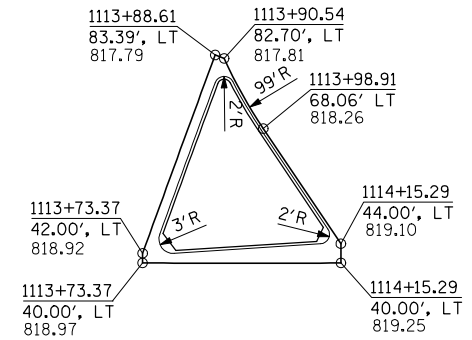


**DETAIL - NW ISLAND LAYOUT**

**CORNER RADIUS DATA**

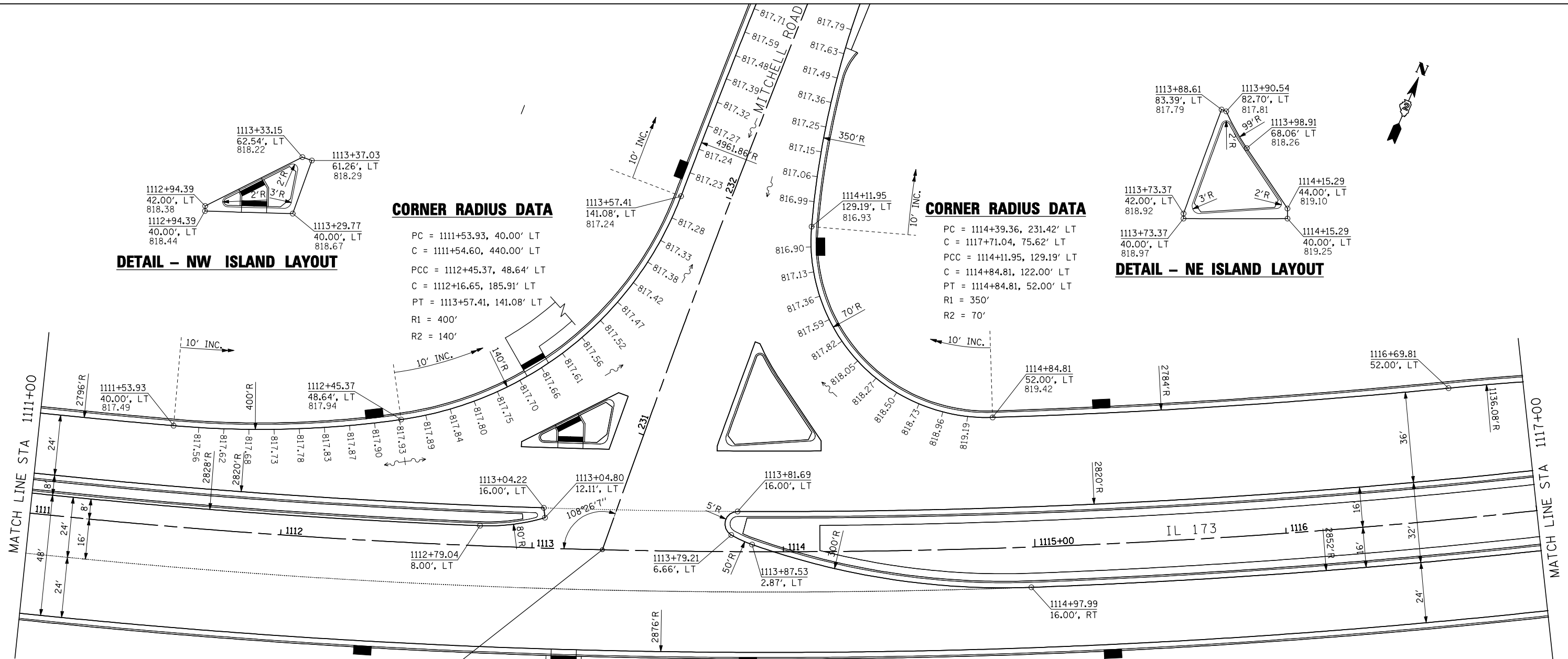
PC = 1111+53.93, 40.00' LT  
 C = 1111+54.60, 440.00' LT  
 PCC = 1112+45.37, 48.64' LT  
 C = 1112+16.65, 185.91' LT  
 PT = 1113+57.41, 141.08' LT  
 R1 = 400'  
 R2 = 140'



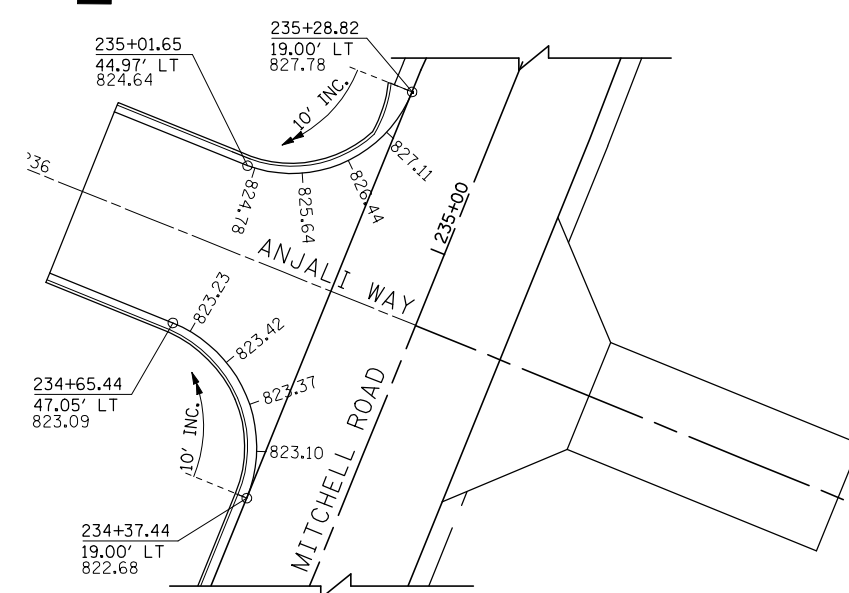
**DETAIL - NE ISLAND LAYOUT**

**CORNER RADIUS DATA**

PC = 1114+39.36, 231.42' LT  
 C = 1117+71.04, 75.62' LT  
 PCC = 1114+11.95, 129.19' LT  
 C = 1114+84.81, 122.00' LT  
 PT = 1114+84.81, 52.00' LT  
 R1 = 350'  
 R2 = 70'



STA 1113+28.00  $\perp$  IL 173 =  
 STA 230+51.49  $\perp$  MITCHELL ROAD



NOTE:  
 1. FOR MORE PC ISLAND AND MEDIANS INFORMATION SEE STANDARD 606301-04



FILE NAME = ...load sheets\2007931VPLN19.dgn <b>THE UPCHURCH GROUP, INC.</b>	USER NAME = Elgin 110	DESIGNED - MJS	REVISED -	<b>STATE OF ILLINOIS DEPARTMENT OF TRANSPORTATION</b>	<b>INTERSECTION AND VARIABLE WIDTH PAVEMENT PLANS IL 173 FROM ALPINE ROAD TO I-90</b>	F.A.P. RTE. = 303	SECTION = 129R	COUNTY = WINNEBAGO	TOTAL SHEETS = 968	SHEET NO. = 548
	PLOT SCALE = 40.0000' / IN.	CHECKED - RMH	REVISED -			SCALE: 1"=20'	SHEET NO. OF SHEETS	STA. 1111+00 TO STA. 1117+00	CONTRACT NO. 64988	
	PLOT DATE = 5/1/2013 1:58:51 PM	DATE - APRIL 30, 2013	REVISED -			ILLINOIS FED. AID PROJECT				