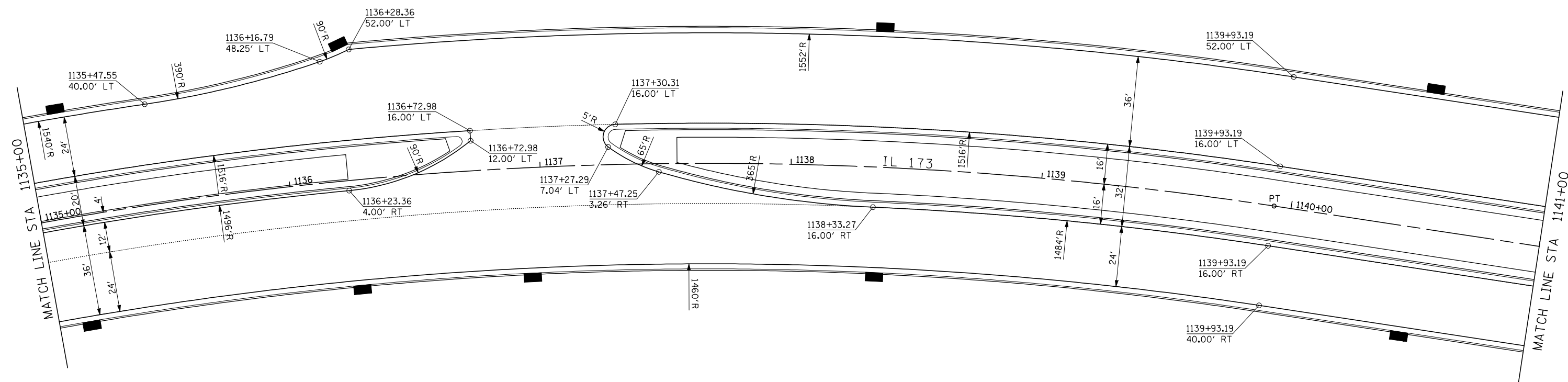




**CORNER RADIUS DATA**

PC = 1135+47.55, 40.00' LT  
 C = 1135+47.55, 430.00' LT  
 PCC = 1136+16.79, 48.25' LT  
 C = 1135+97.95, 136.00' LT  
 PT = 1136+28.36, 52.00' LT  
 R1 = 390'  
 R2 = 90'



NOTE:  
 1. FOR MORE PC ISLAND AND MEDIANS INFORMATION SEE STANDARD 606301-04



FILE NAME = ...load sheets\2007931VPLN23.dgn	USER NAME = Elgin 110	DESIGNED - MJS	REVISED -
THE UPCHURCH GROUP, INC.	PLOT SCALE = 40.0000' / IN.	DRAWN - LMP	REVISED -
	PLOT DATE = 5/1/2013 1:58:58 PM	CHECKED - RMH	REVISED -
		DATE - APRIL 30, 2013	REVISED -

**STATE OF ILLINOIS  
 DEPARTMENT OF TRANSPORTATION**

**INTERSECTION AND VARIABLE WIDTH PAVEMENT PLANS  
 IL 173 FROM ALPINE ROAD TO I-90**

SCALE: 1"=20' SHEET NO. OF SHEETS STA. 1135+00 TO STA. 1141+00

F.A.P. RTE.	SECTION	COUNTY	TOTAL SHEETS	SHEET NO.
303	129R	WINNEBAGO	968	552
			CONTRACT NO. 64988	
ILLINOIS FED. AID PROJECT				