

CORNER RADIUS DATA

PC = 388+32.58, 31.00' LT
 C = 388+32.58, 276.00' LT
 PCC = 389+09.08, 43.25' LT
 C = 388+95.03, 86.00' LT
 PT = 389+37.32, 101.39' LT
 R1 = 245'
 R2 = 45'

CORNER RADIUS DATA

PC = 390+45.98, 33.06' LT
 C = 390+44.64, 93.05' LT
 PCC = 390+02.84, 50.00' LT
 C = 391+28.24, 179.14' LT
 PT = 389+59.09, 117.57' LT
 R1 = 60'
 R2 = 180'

CORNER RADIUS DATA

PC = 389+18.30, 31.00' RT
 C = 389+18.30, 101.00' RT
 PT = 389+74.49, 59.26' RT
 R = 70'

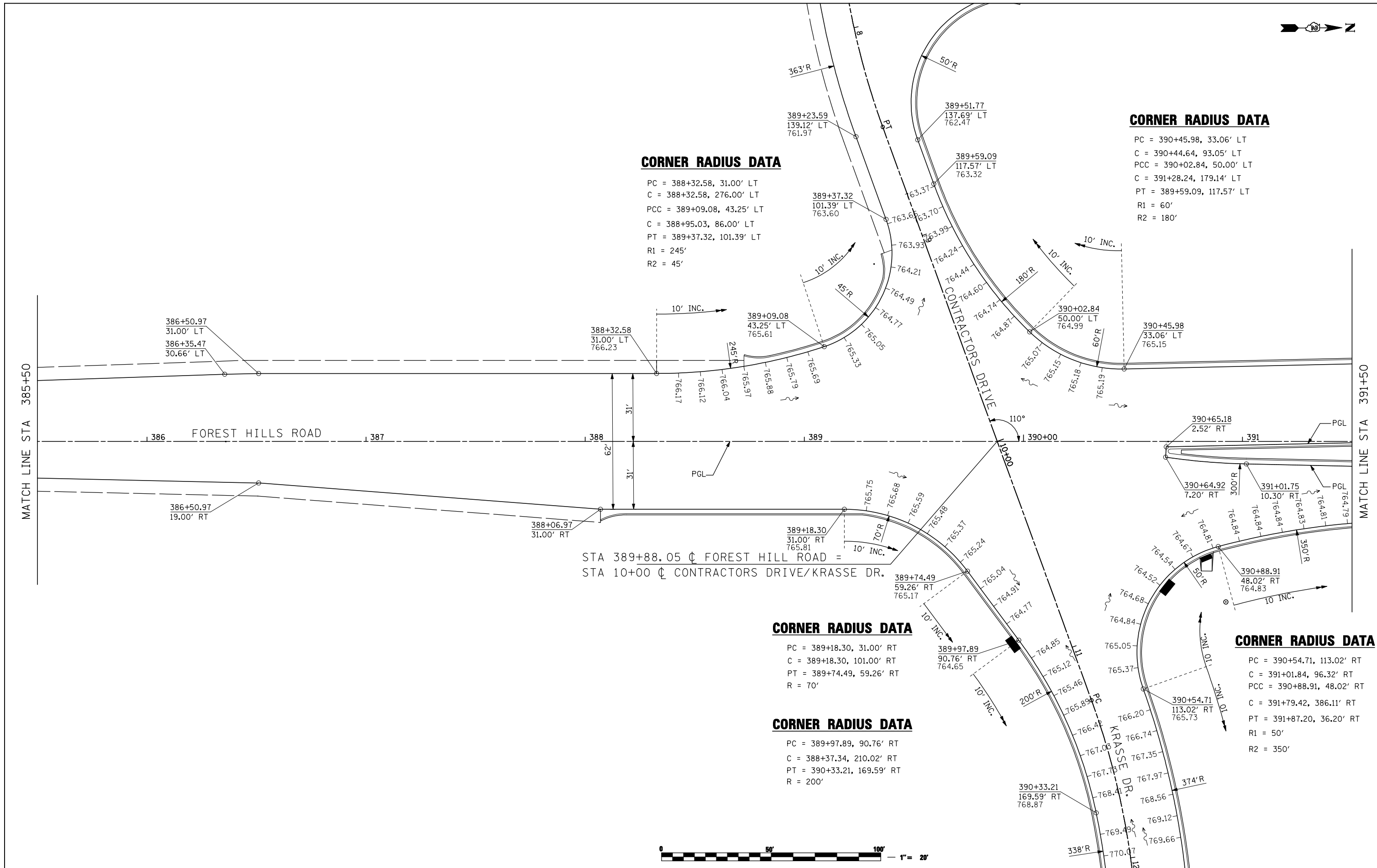
CORNER RADIUS DATA

PC = 389+97.89, 90.76' RT
 C = 388+37.34, 210.02' RT
 PT = 390+33.21, 169.59' RT
 R = 200'

CORNER RADIUS DATA

PC = 390+54.71, 113.02' RT
 C = 391+01.84, 96.32' RT
 PCC = 390+88.91, 48.02' RT
 C = 391+79.42, 386.11' RT
 PT = 391+87.20, 36.20' RT
 R1 = 50'
 R2 = 350'

STA 389+88.05 @ FOREST HILL ROAD =
 STA 10+00 @ CONTRACTORS DRIVE/KRASSE DR.



FILE NAME =	USER NAME = Elgin 110	DESIGNED - MJS	REVISED -
...load sheets\2007931VPPLN28.dgn		DRAWN - LMP	REVISED -
		CHECKED - RMH	REVISED -
		DATE - APRIL 30, 2013	REVISED -

**STATE OF ILLINOIS
 DEPARTMENT OF TRANSPORTATION**

**INTERSECTION AND VARIABLE WIDTH PAVEMENT PLANS
 FOREST HILLS ROAD**

SCALE: 1"=20' SHEET NO. OF SHEETS STA. 385+50 TO STA. 391+50

F.A.P. RTE.	SECTION	COUNTY	TOTAL SHEETS	SHEET NO.
303	129R	WINNEBAGO	968	557
			CONTRACT NO. 64988	
ILLINOIS FED. AID PROJECT				

THE UPCHURCH GROUP, INC.