



CORNER RADIUS DATA

PC = 453+16.80, 52.00' LT
 C = 453+16.80, 92.00' LT
 PT = 453+56.74, 94.26' LT
 R = 40'

CORNER RADIUS DATA

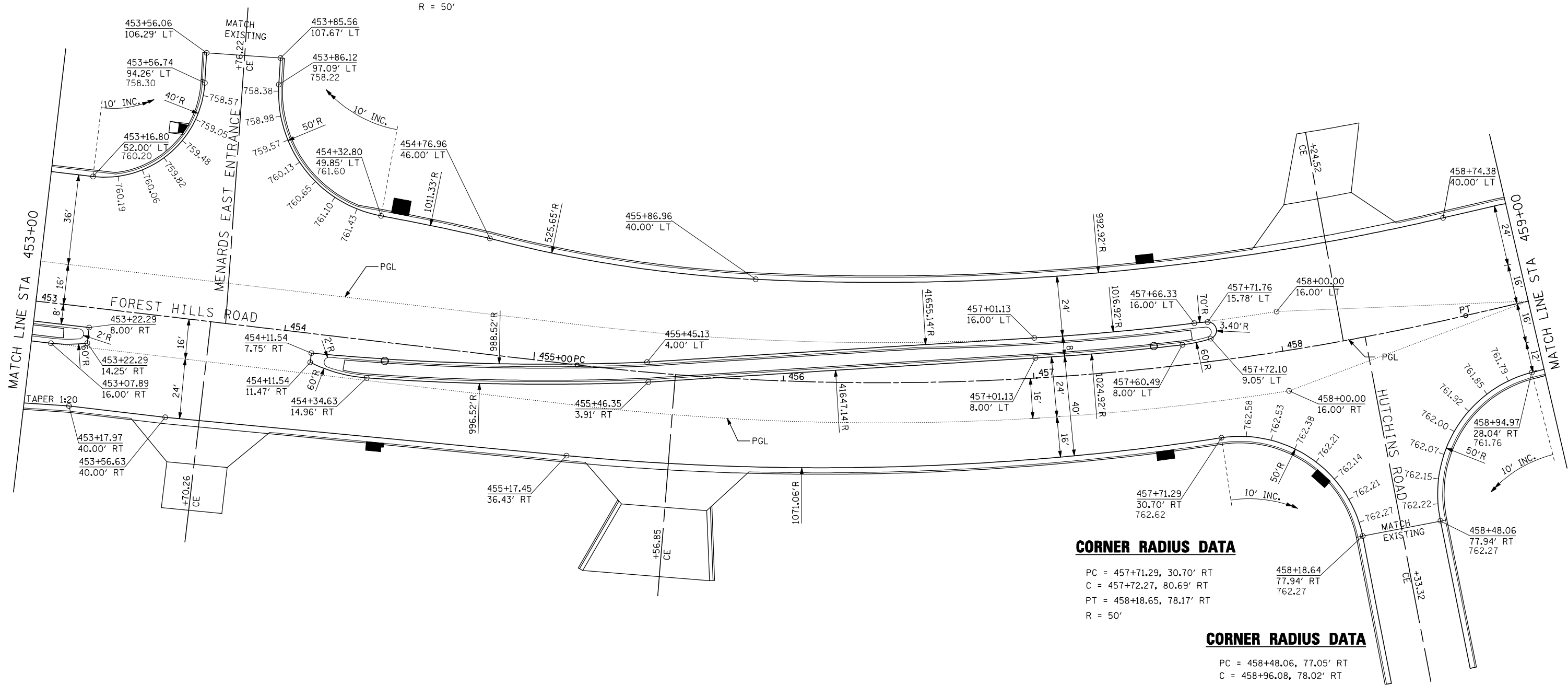
PC = 453+86.12, 97.09' LT
 C = 454+36.05, 99.75' LT
 PT = 454+32.80, 49.85' LT
 R = 50'

CORNER RADIUS DATA

PC = 457+71.29, 30.70' RT
 C = 457+72.27, 80.69' RT
 PT = 458+18.65, 78.17' RT
 R = 50'

CORNER RADIUS DATA

PC = 458+48.06, 77.05' RT
 C = 458+96.08, 78.02' RT
 PT = 458+94.97, 28.04' RT
 R = 50'



FILE NAME = ...load sheets\2007931VPLN31.dgn	USER NAME = Elgin 110	DESIGNED - MJS	REVISED -	STATE OF ILLINOIS DEPARTMENT OF TRANSPORTATION	INTERSECTION AND VARIABLE WIDTH PAVEMENT PLANS FOREST HILLS ROAD			F.A.P. RTE. 303	SECTION 129R	COUNTY WINNEBAGO	TOTAL SHEETS 968	SHEET NO. 560
	PLOT SCALE = 40.0000' / IN.	CHECKED - RMH	REVISED -					SCALE: 1"=20'	SHEET NO. OF SHEETS	STA. 453+00 TO STA. 459+00	CONTRACT NO. 64988	
THE UPCHURCH GROUP, INC.	PLOT DATE = 5/1/2013 1:59:13 PM	DATE - APRIL 30, 2013	REVISED -									