
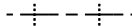
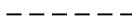
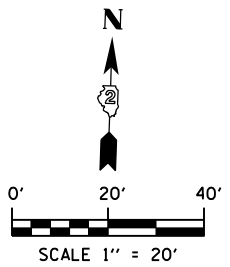


MATCH LINE STA 216+70

STA 217+66.08

LEGEND

-  CONSTRUCTION JOINT
-  SAWED LONGITUDINAL JOINT
-  SAWED TRANSVERSE JOINT



NOTES:

1. DISTANCE BETWEEN TRANSVERSE JOINTS IS 15', UNLESS OTHERWISE NOTED.
2. SEE STANDARDS 420001, 420106 AND 606001 FOR ADDITIONAL CONSTRUCTION INFORMATION.
3. PAVEMENT BLOCK OUTS FOR MANHOLES AND OTHER STRUCTURES SHALL BE CONSTRUCTED IN ACCORDANCE WITH STANDARD 420111.
4. ADDITIONAL SAWED CONSTRUCTION JOINTS MAY BE REQUIRED IN THE FIELD. EXACT JOINT LOCATIONS SHALL BE VERIFIED AND APPROVED BY THE ENGINEER.
5. TRANSVERSE JOINT SPACING DIMENSIONS ARE AT AND PERPENDICULAR TO ϕ EXCEPT AT RADIUS RETURNS.

PR ϕ BURDEN ROAD

STA 216+31.30

PR ϕ BURDEN RD.

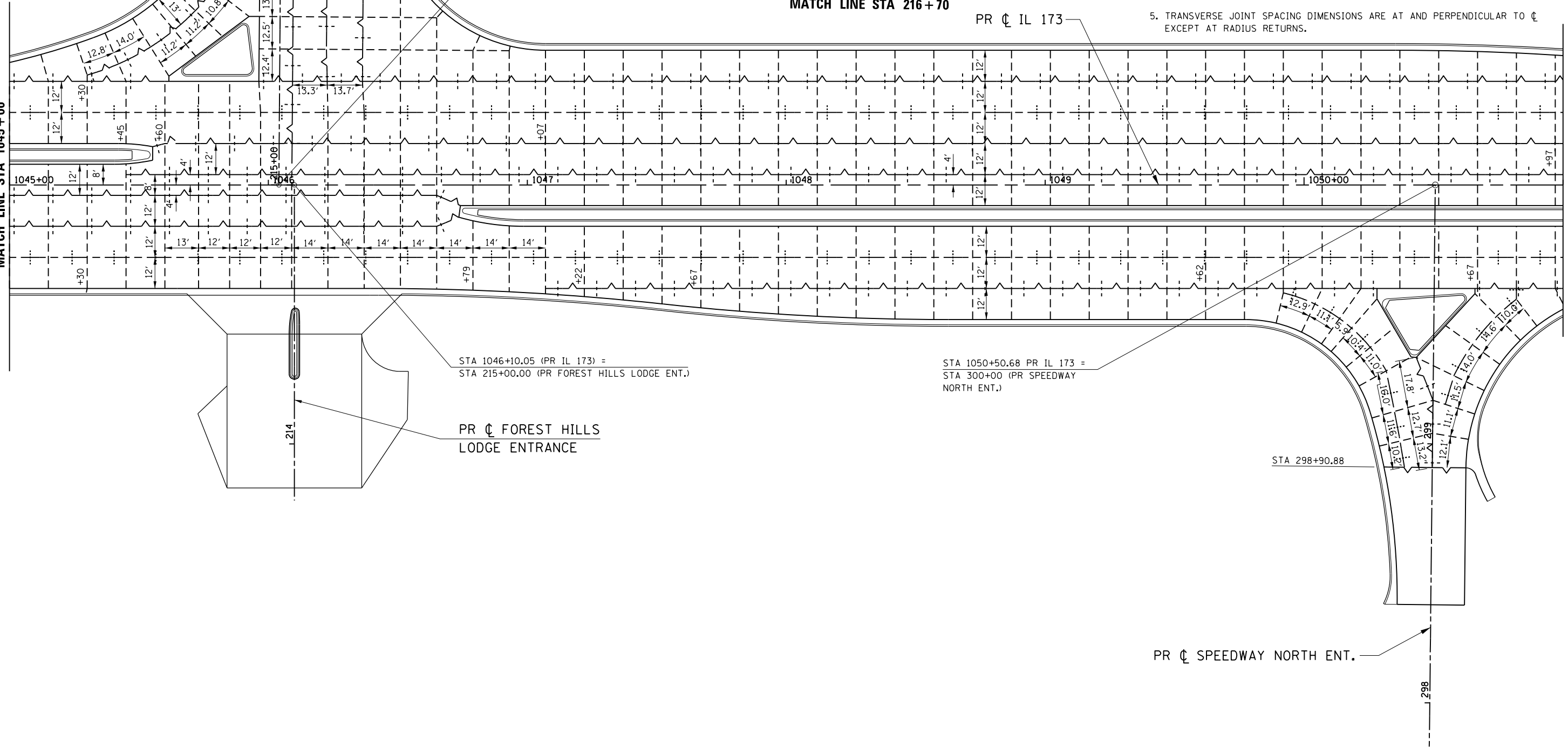
STA 1046+04.05 (PR IL 173) =
STA 215+00.00 (PR BURDEN RD.)

MATCH LINE STA 216+70

PR ϕ IL 173

MATCH LINE STA 1045+00

MATCH LINE STA 1051+00



STA 1046+10.05 (PR IL 173) =
STA 215+00.00 (PR FOREST HILLS LODGE ENT.)

PR ϕ FOREST HILLS
LODGE ENTRANCE

STA 1050+50.68 PR IL 173 =
STA 300+00 (PR SPEEDWAY
NORTH ENT.)

STA 298+90.88

PR ϕ SPEEDWAY NORTH ENT.

FILE NAME = Z00793JT-05_IL173.dgn
MODEL = Untitled Sheet
PLOT DRIVER = V8...IDOT_PDF...11x17.pltcf9



USER NAME = rgoertz	DESIGNED - RG	REVISED -
PLOT SCALE = 480.0000' / ft.	DRAWN - TRF	REVISED -
PLOT DATE = 5/3/2013	CHECKED - CMS	REVISED -
	DATE - APRIL 30, 2013	REVISED -

STATE OF ILLINOIS
DEPARTMENT OF TRANSPORTATION

PAVEMENT JOINTING PLAN
IL 173

SCALE: 1" = 20" SHEET NO. OF SHEETS STA. 1045+00 TO STA. 1051+00

F.A.P. RTE.	SECTION	COUNTY	TOTAL SHEETS	SHEET NO.
303	129R	WINNEBAGO	968	566
CONTRACT NO. 64988				
FED. ROAD DIST. NO. 2 ILLINOIS FED. AID PROJECT				