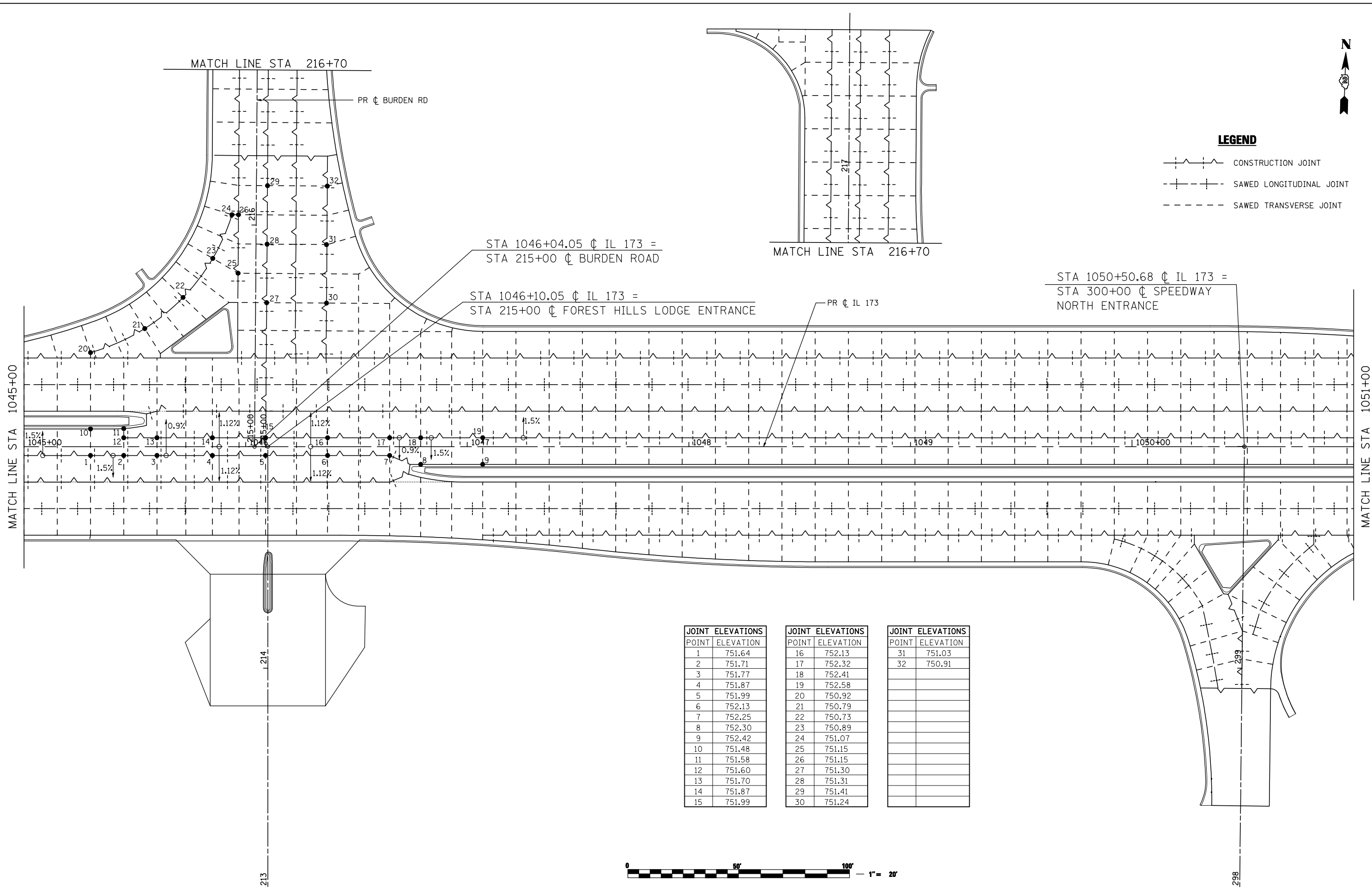




LEGEND

- CONSTRUCTION JOINT
- SAWED LONGITUDINAL JOINT
- SAWED TRANSVERSE JOINT



JOINT ELEVATIONS		JOINT ELEVATIONS		JOINT ELEVATIONS	
POINT	ELEVATION	POINT	ELEVATION	POINT	ELEVATION
1	751.64	16	752.13	31	751.03
2	751.71	17	752.32	32	750.91
3	751.77	18	752.41		
4	751.87	19	752.58		
5	751.99	20	750.92		
6	752.13	21	750.79		
7	752.25	22	750.73		
8	752.30	23	750.89		
9	752.42	24	751.07		
10	751.48	25	751.15		
11	751.58	26	751.15		
12	751.60	27	751.30		
13	751.70	28	751.31		
14	751.87	29	751.41		
15	751.99	30	751.24		



FILE NAME = ... \CADD SHEETS\Z00793PJE03.dgn	USER NAME = Elgin 110	DESIGNED - RLH	REVISED -
		DRAWN - RMH	REVISED -
		CHECKED - MJS	REVISED -
		DATE - APRIL 30, 2013	REVISED -

**STATE OF ILLINOIS
DEPARTMENT OF TRANSPORTATION**

PAVEMENT JOINT ELEVATIONS IL 173 FROM ALPINE ROAD TO I-90			
SCALE: 1"=20'	SHEET NO. OF SHEETS	STA. 1045+00 TO STA. 1051+00	

F.A.P. RTE. 303	SECTION 129R	COUNTY WINNEBAGO	TOTAL SHEETS 968	SHEET NO. 593
			CONTRACT NO. 64988	
ILLINOIS FED. AID PROJECT				