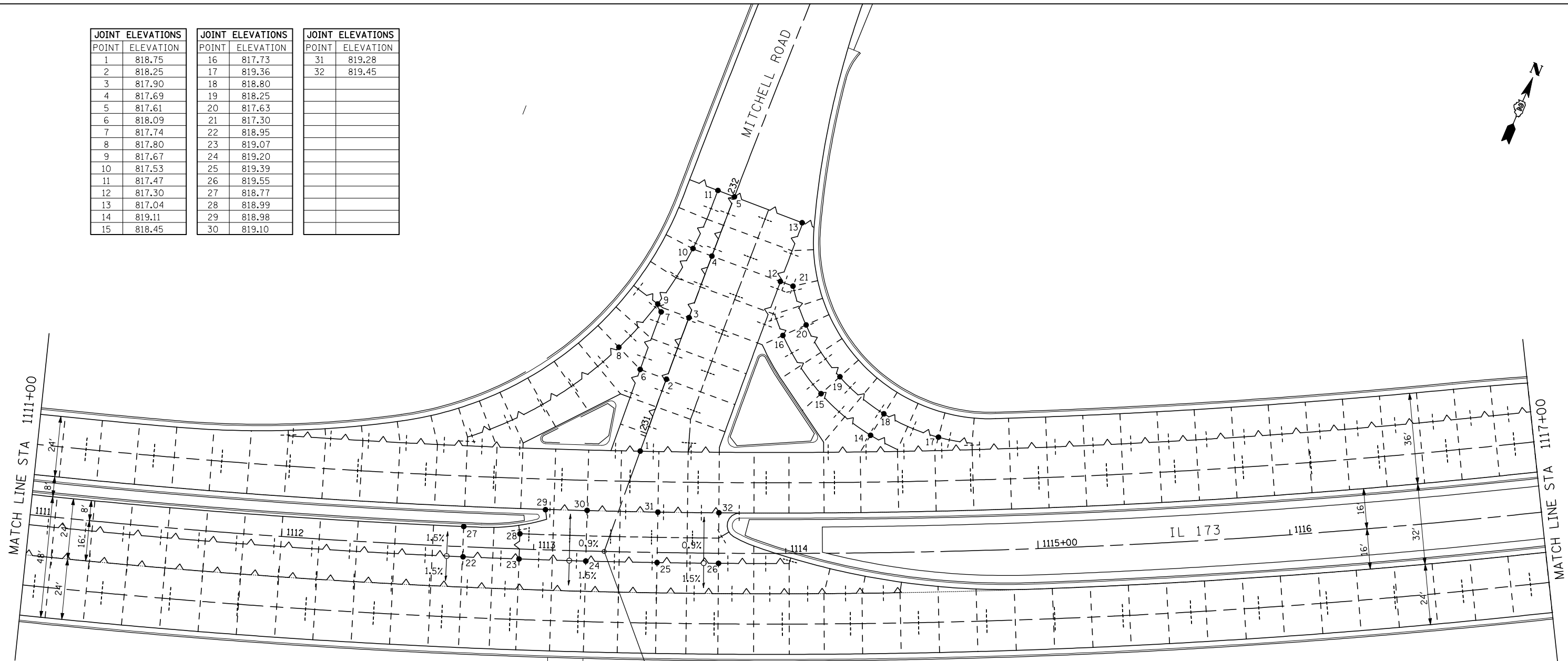


JOINT ELEVATIONS		JOINT ELEVATIONS		JOINT ELEVATIONS	
POINT	ELEVATION	POINT	ELEVATION	POINT	ELEVATION
1	818.75	16	817.73	31	819.28
2	818.25	17	819.36	32	819.45
3	817.90	18	818.80		
4	817.69	19	818.25		
5	817.61	20	817.63		
6	818.09	21	817.30		
7	817.74	22	818.95		
8	817.80	23	819.07		
9	817.67	24	819.20		
10	817.53	25	819.39		
11	817.47	26	819.55		
12	817.30	27	818.77		
13	817.04	28	818.99		
14	819.11	29	818.98		
15	818.45	30	819.10		



STA 1113+28.00 \oslash IL 173 =
 STA 230+51.49 \oslash MITCHELL ROAD

LEGEND

- CONSTRUCTION JOINT
- SAWED LONGITUDINAL JOINT
- SAWED TRANSVERSE JOINT

NOTE:
 1. FOR MORE PC ISLAND AND MEDIANS INFORMATION SEE STANDARD 606301-04



FILE NAME =
 ...CADD SHEETS\Z00793PJE06.dgn
THE UPCHURCH GROUP, INC.

USER NAME = Elgin 110	DESIGNED - RLH	REVISED -
PLOT SCALE = 40.0000' / IN.	DRAWN - RMH	REVISED -
PLOT DATE = 5/3/2013 8:44:55 AM	CHECKED - MJS	REVISED -
	DATE - APRIL 30, 2013	REVISED -

STATE OF ILLINOIS
DEPARTMENT OF TRANSPORTATION

PAVEMENT JOINT ELEVATIONS
IL 173 FROM ALPINE ROAD TO I-90
 SCALE: 1"=20' SHEET NO. OF SHEETS STA. 1111+00 TO STA. 1117+00

F.A.P. RTE.	SECTION	COUNTY	TOTAL SHEETS	SHEET NO.
303	129R	WINNEBAGO	968	596
			CONTRACT NO. 64988	
ILLINOIS FED. AID PROJECT				