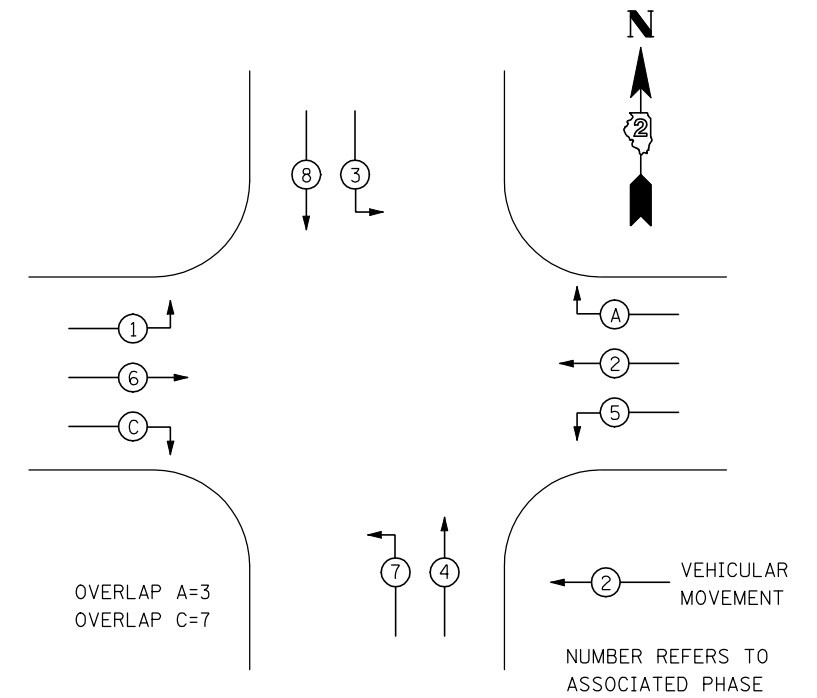


FIBER INTERCONNECT TO ALPINE RD
 SERVICE NO. 6 3/C
 FIBER INTERCONNECT TO KIMBER RD



LEGEND

- INDICATES NUMBER OF NEW CONTROLLERS. ALL CABLE IS NO. 14 EXCEPT AS INDICATED
- NEW SIGNAL HEAD WITH OR WITHOUT BACKPLATE.
- LUMINAIRES, 400 WATT
- EMERGENCY VEHICLE PREEMPTION
- VIDEO DETECTION SYSTEM



PHASE DESIGNATION DIAGRAM
 REFER TO STANDARD 857001

DETECTION ZONES		
ZONE	PHASE	DIRECTION
A	4	NB PRESENCE
B	7	NB LEFT TURN
C	A	WB RIGHT TURN
D	2	WB PRESENCE
E	5	WB LEFT TURN
F	8	SB PRESENCE
G	3	SB LEFT TURN
H	C	EB RIGHT TURN
I	6	EB PRESENCE
J	1	EB LEFT TURN



USER NAME = #USER#	DESIGNED - JAF	REVISED -
	DRAWN - JAF	REVISED -
PLOT SCALE = #SCALE#	CHECKED - THW	REVISED -
PLOT DATE = #DATE#	DATE - 4.30 2013	REVISED -

**STATE OF ILLINOIS
 DEPARTMENT OF TRANSPORTATION**

**PROPOSED CABLE DIAGRAM
 IL RTE 173 & CONTINENTAL DR.**

SCALE: SHEET NO. 1 OF 1 SHEETS STA. TO STA.

F.A. RTE.	SECTION	COUNTY	TOTAL SHEETS	SHEET NO.
303	129R	WINNEBAGO	968	651
			CONTRACT NO. 64988	
ILLINOIS FED. AID PROJECT				