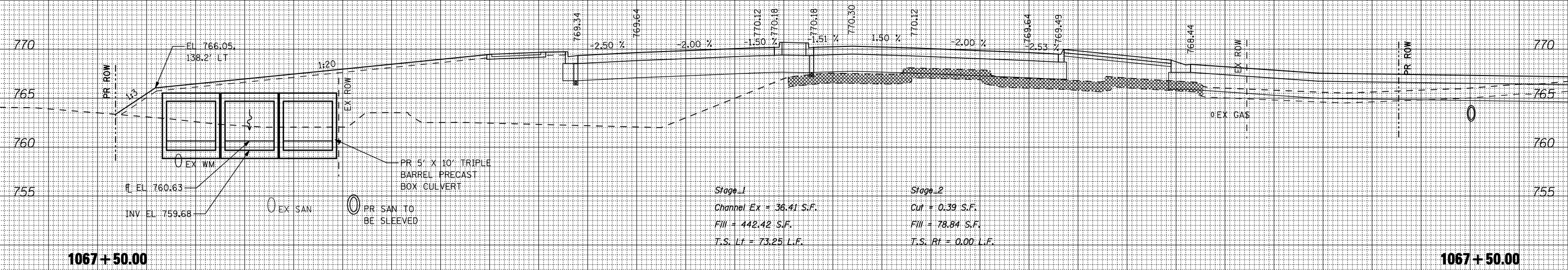


170 160 150 140 130 120 110 100 90 80 70 60 50 40 30 20 10 0 10 20 30 40 50 60 70 80 90 100 110 120 130 140 150

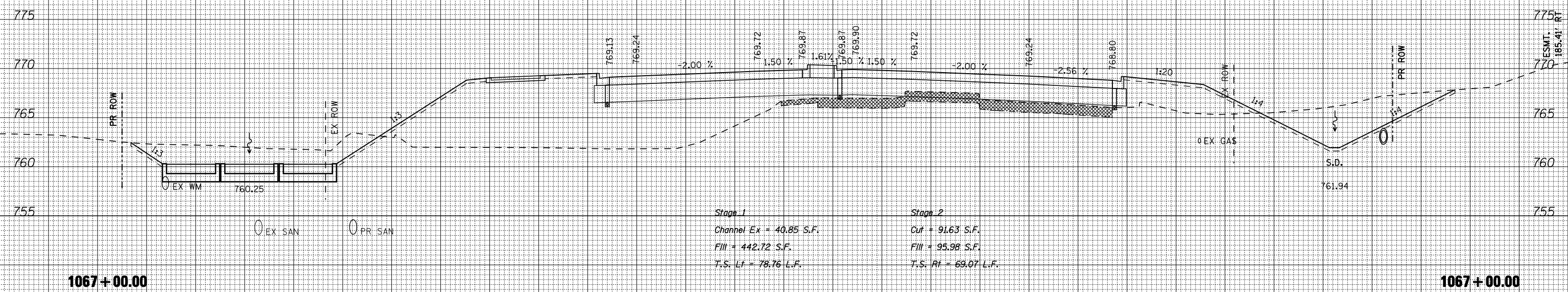
BY	DATE
FINAL SURVEY	SURVEYED
NOTE BOOK	PLOTTED
NO.	TEMPLATE
	AREAS CHECKED



Stage 1
 Channel Ex = 36.41 S.F.
 Fill = 442.42 S.F.
 T.S. Lt = 73.25 L.F.

Stage 2
 Cut = 0.39 S.F.
 Fill = 78.84 S.F.
 T.S. Rt = 0.00 L.F.

BY	DATE
ORIGINAL SURVEY	SURVEYED
NOTE BOOK	PLOTTED
NO.	TEMPLATE
	AREAS CHECKED



Stage 1
 Channel Ex = 40.85 S.F.
 Fill = 442.72 S.F.
 T.S. Lt = 78.76 L.F.

Stage 2
 Cut = 91.63 S.F.
 Fill = 95.98 S.F.
 T.S. Rt = 69.07 L.F.

170 160 150 140 130 120 110 100 90 80 70 60 50 40 30 20 10 0 10 20 30 40 50 60 70 80 90 100 110 120 130 140 150

FILE NAME = ... \CADD SHEETS\Z007933MISHT.DGN
 THE UPCHURCH GROUP, INC.

USER NAME = Elgrn 110
 DESIGNED - SJF
 DRAWN - SAE
 CHECKED - RMH
 DATE - APRIL 30, 2013

REVISED -
 REVISED -
 REVISED -
 REVISED -

STATE OF ILLINOIS
 DEPARTMENT OF TRANSPORTATION

CROSS SECTIONS IL 173

SCALE: SHEET NO. OF SHEETS STA. 1067+00.00 TO STA. 1067+50.00

F.A.P. RTE.	SECTION	COUNTY	TOTAL SHEETS	SHEET NO.
303	129R	WINNEBAGO	968	808
CONTRACT NO. 64988			ILLINOIS FED. AID PROJECT	