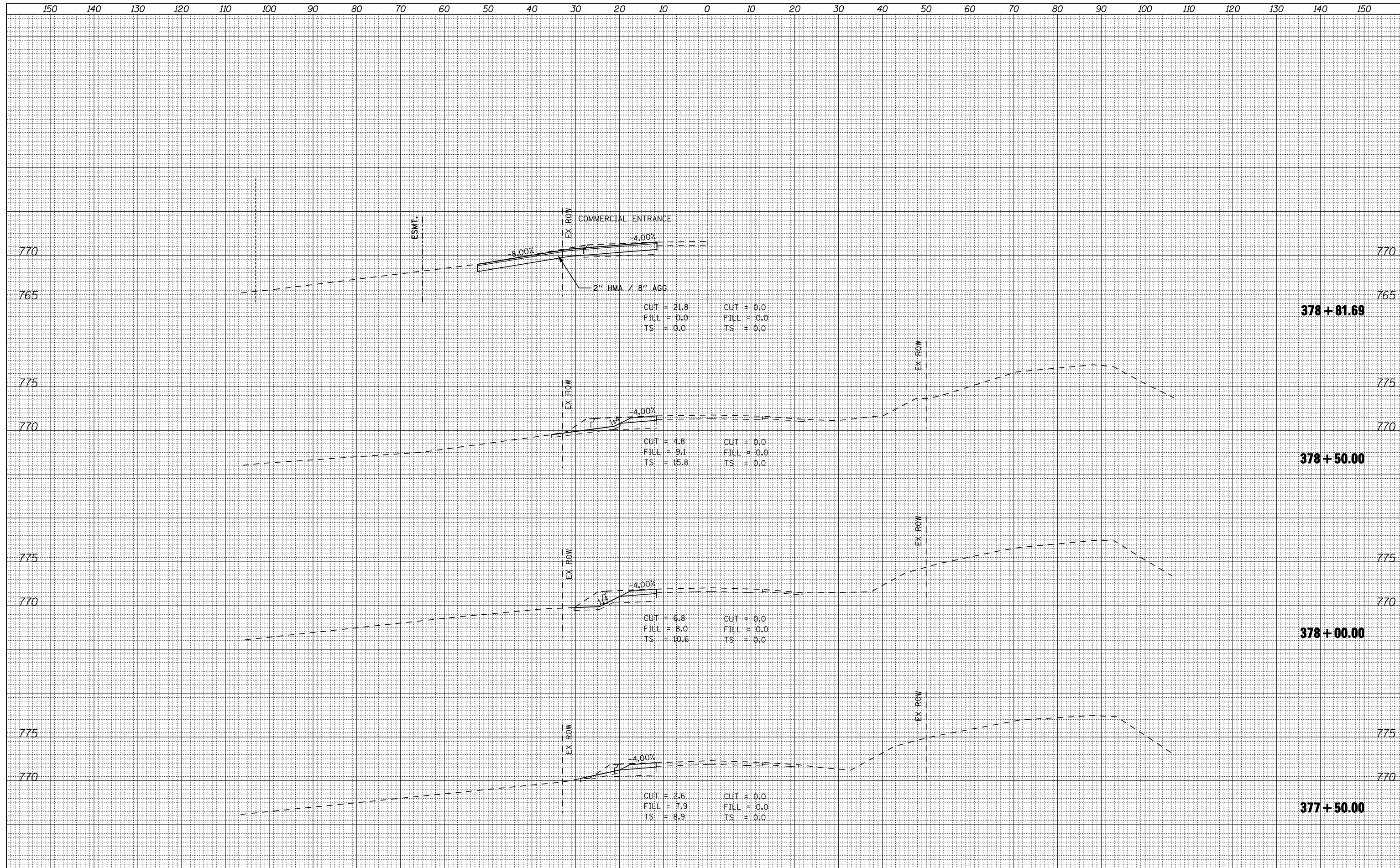


DATE	
BY	
SURVEYED	
PLOTTED	
TEMPLATE	
AREAS	
CHECKED	
NO.	

DATE	
BY	
SURVEYED	
PLOTTED	
TEMPLATE	
AREAS	
CHECKED	
NO.	



FILE NAME = ...\\cadd sheets\200793X565HT.dgn  
**THE UPCHURCH GROUP, INC.**

USER NAME = Elgin 110	DESIGNED - RLH	REVISIED -
	DRAWN - LMP	REVISIED -
	CHECKED - MJS	REVISIED -
	DATE - APRIL 30, 2013	REVISIED -

**STATE OF ILLINOIS  
 DEPARTMENT OF TRANSPORTATION**

**CROSS SECTIONS FOREST HILLS**

SCALE:      SHEET NO.    OF    SHEETS    STA. 377+50.00    TO    STA. 378+81.69

F.A.P. RTE. 303	SECTION 129R	COUNTY WINNEBAGO	TOTAL SHEETS 968	SHEET NO. 905
			CONTRACT NO. 64988	
ILLINOIS FED. AID PROJECT				