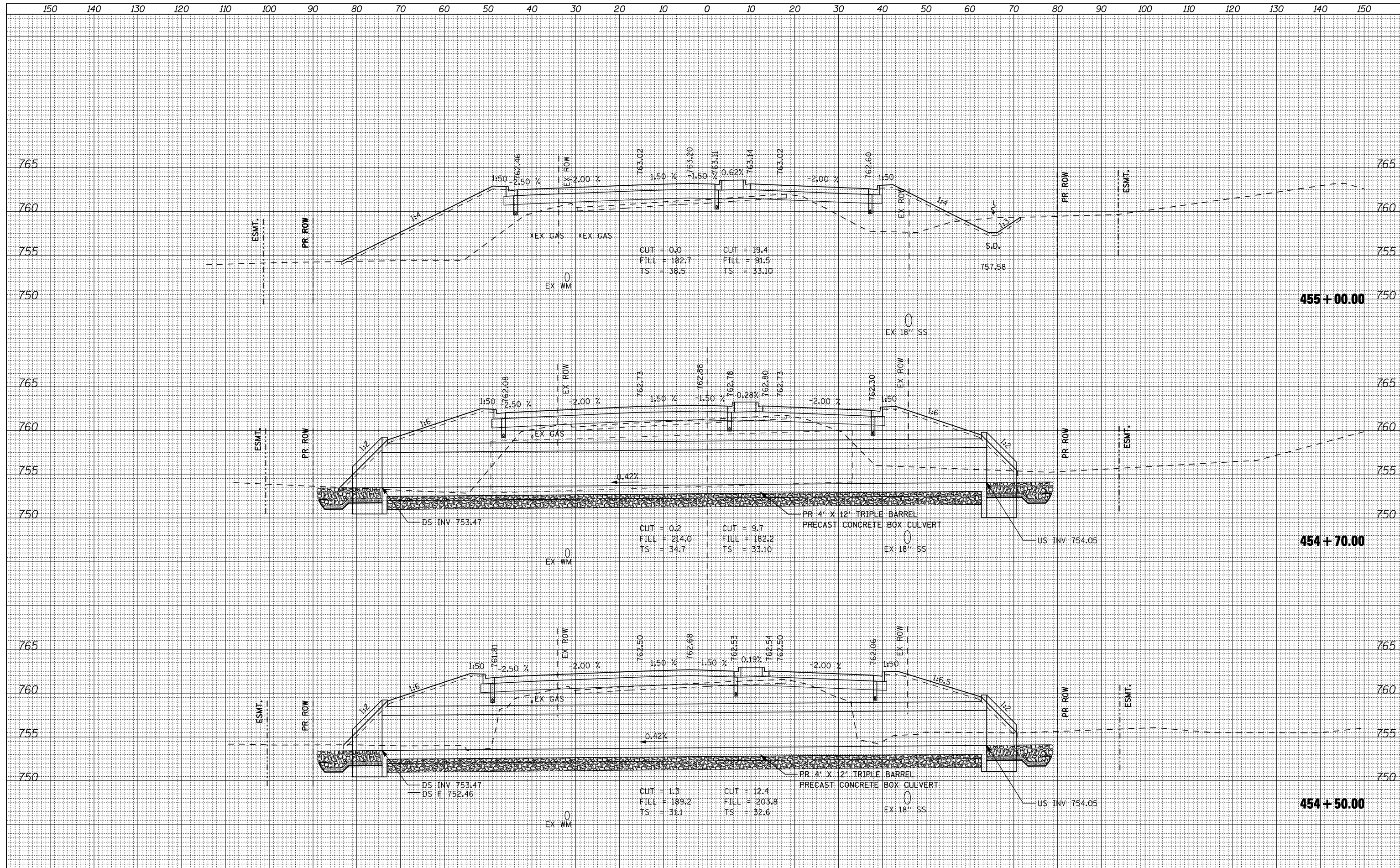


DATE	
BY	
SURVEYED	
PLOTTED	
TEMPLATE	
AREAS CHECKED	
NO.	

DATE	
BY	
SURVEYED	
PLOTTED	
TEMPLATE	
AREAS CHECKED	
NO.	



FILE NAME = ...\\cadd sheets\200793XS65HT.dgn  
**THE UPCHURCH GROUP, INC.**

USER NAME = Elgin 110	DESIGNED - RLH	REVISED -
	DRAWN - LMP	REVISED -
	CHECKED - MJS	REVISED -
	DATE - APRIL 30, 2013	REVISED -

**STATE OF ILLINOIS  
DEPARTMENT OF TRANSPORTATION**

**CROSS SECTIONS FOREST HILLS**

SCALE: SHEET NO. OF SHEETS STA. 454+50.00 TO STA. 455+00.00

F.A.P. RTE. 303	SECTION 129R	COUNTY WINNEBAGO	TOTAL SHEETS 968	SHEET NO. 922
			CONTRACT NO. 64988	
ILLINOIS FED. AID PROJECT				