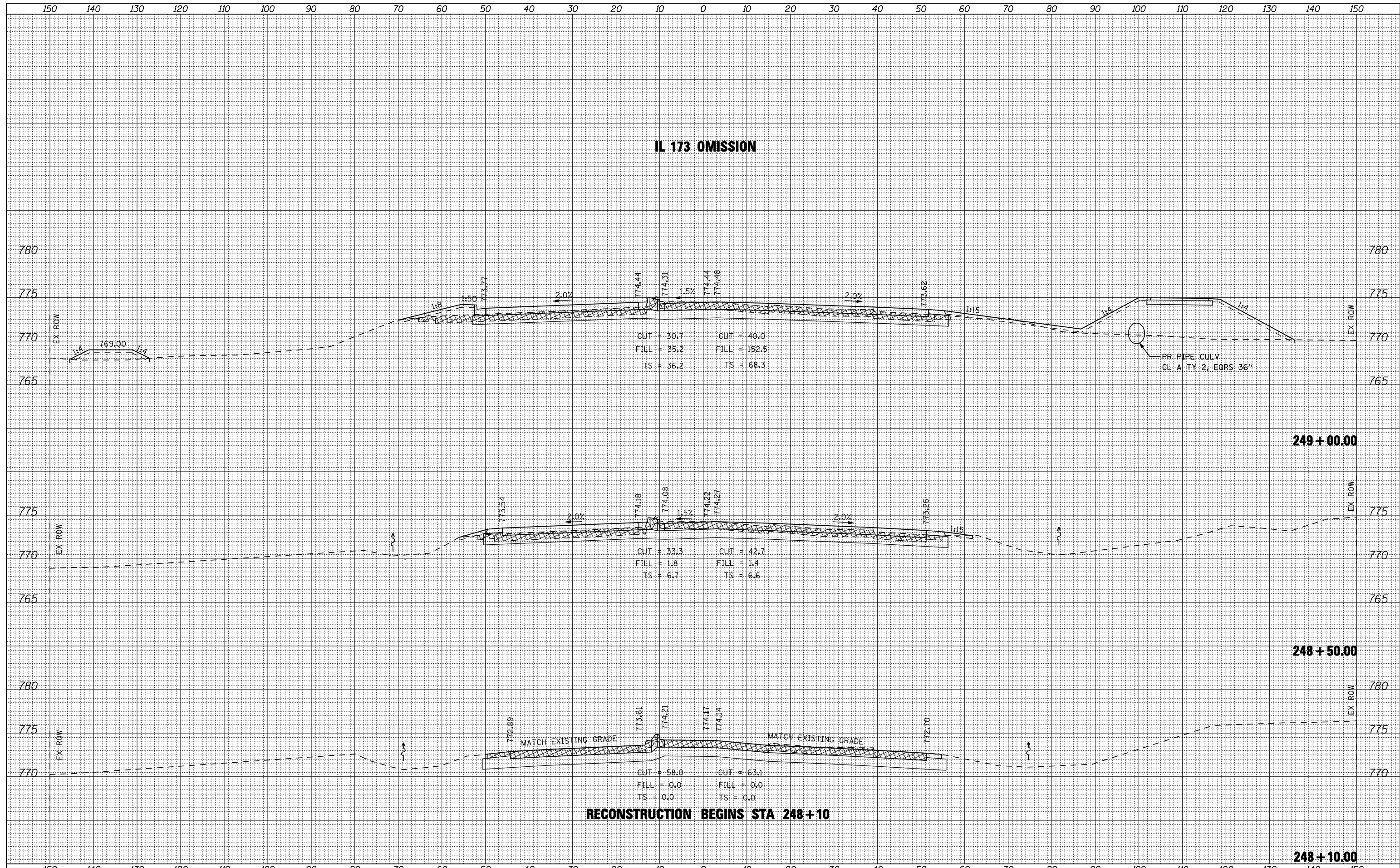


DATE	
BY	
SURVEYED	
PLOTTED	
TEMPLATE	
NOTE BOOK	
AREAS CHECKED	
NO.	

DATE	
BY	
SURVEYED	
PLOTTED	
TEMPLATE	
NOTE BOOK	
AREAS CHECKED	
NO.	



FILE NAME = ...cadd sheets\200793X585HT.dgn	USER NAME = Elgin 110	DESIGNED - RLH	REVISED -	STATE OF ILLINOIS DEPARTMENT OF TRANSPORTATION	CROSS SECTIONS PERRYVILLE ROAD	F.A.P. RTE. 303	SECTION 129R	COUNTY WINNEBAGO	TOTAL SHEETS 968	SHEET NO. 939
THE UPCHURCH GROUP, INC.	PLOT SCALE = 20.0000' / IN.	DRAWN - LMP	REVISED -			CONTRACT NO. 64988				
PLOT DATE = 5/3/2013	CHECKED - MJS	REVISIONS -	REVISED -			ILLINOIS FED. AID PROJECT				
DATE - APRIL 30, 2013	DATE -	REVISED -	REVISED -			SCALE: SHEET NO. OF SHEETS STA. 248+10.79 TO STA. 249+00.00				