

FOR INDEX OF SHEETS, SEE SHEET NO. 2
FOR LIST OF STANDARDS, SEE SHEET NO. 2

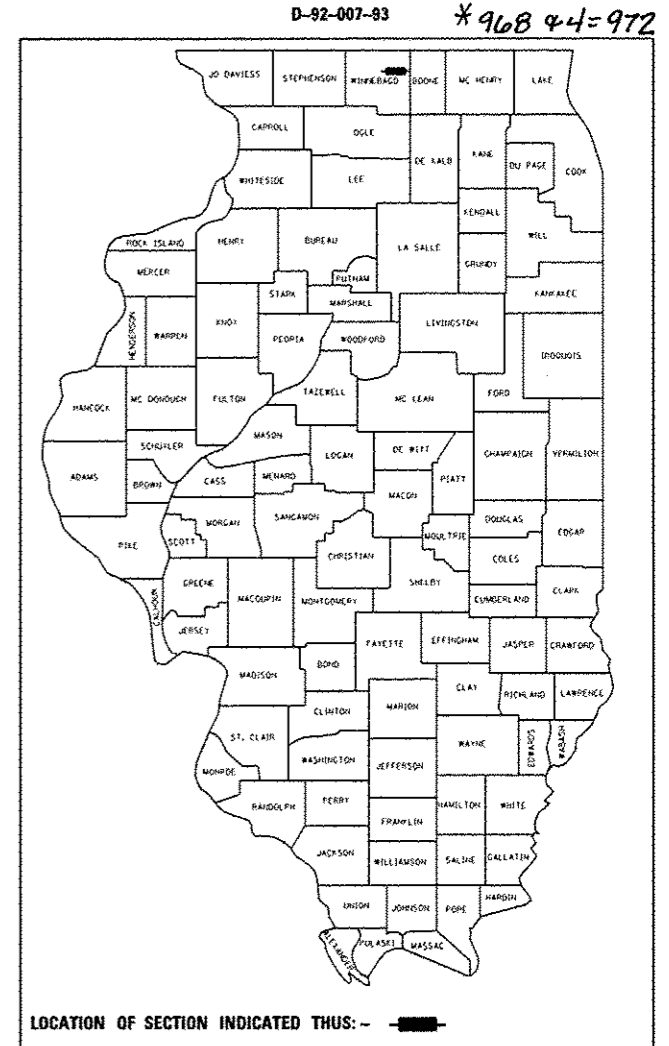
STATE OF ILLINOIS
DEPARTMENT OF TRANSPORTATION
DIVISION OF HIGHWAYS
**PROPOSED
HIGHWAY PLANS**

F.A.P. RTE.	SECTION	COUNTY	TOTAL SHEETS	SHEET NO.
303	129R	WINNEBAGO	968	1
FED. ROAD DIST. NO. 2		ILLINOIS	CONTRACT NO. 64988	

COMPANY	SEAL	COMPANY	SEAL
THE UPCHURCH GROUP, INC. <i>[Signature]</i> DATE: 05-03-2013 SIGNATURE AND SEAL APPLY TO ALL SHEETS EXCEPT AS NOTED BELOW	MARTIN J. SILVESTER 062-045266 LICENSED PROFESSIONAL ENGINEER OF ILLINOIS EXP. 11-30-2013	BAXTER WOODMAN, INC. <i>[Signature]</i> DATE: 4/22/13 SIGNATURE AND SEAL APPLY TO SHEETS WATERMAIN RELATED ONLY 454-480	GERALD D. GROH 062-043421 LICENSED PROFESSIONAL ENGINEER OF ILLINOIS EXP. 11-30-2013
FUHRMANN ENGINEERING, INC. <i>[Signature]</i> DATE: 4/12/13 SIGNATURE AND SEAL APPLY TO SHEETS 46, 111-114, 129-130, 213-222, 226, 403-408, 641-676, 949-968	GINA M. FUHRMANN 062-052801 REGISTERED PROFESSIONAL ENGINEER OF SPRINGFIELD, IL EXP. Expires 11/30/2013		
QUIGG ENGINEERING, INC. <i>[Signature]</i> DATE: 4/26/13 SIGNATURE AND SEAL APPLY TO SHEETS 102-106, 115-119, 227-362, 562-639	CLAYTON M. SHIPLEY 062-051269 LICENSED PROFESSIONAL ENGINEER OF ILLINOIS EXP. 11/30/2013	QUIGG ENGINEERING, INC. <i>[Signature]</i> DATE: 4/24/13 SIGNATURE AND SEAL APPLY TO SHEETS 49, 98, 131-145, 489-529	MICHAEL T. MATZKE 062-038471 LICENSED PROFESSIONAL ENGINEER OF ILLINOIS EXP. 11/30/2013

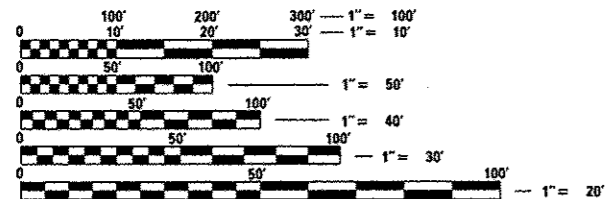
FAP 303 (IL 173)
SECTION 129R
PROJECT: NHPP-0303 (056)
RECONSTRUCTION OF IL 173 FROM ALPINE ROAD TO I-90 IN MACHESNEY PARK, IL
WINNEBAGO COUNTY
C-92-157-10

STATION EQUATION
STA 1155 + 22.68 BK =
STA 154 + 90.29 AH



DESIGN DESIGNATION
FAP ROUTE 303 (IL173) - 38550(25) PRINCIPAL ARTERIAL 6.03 (PCC-40)

THE PROJECT IS LOCATED IN THE VILLAGE OF MACHESNEY PARK AND THE CITY OF LOVES PARK



FULL SIZE PLANS HAVE BEEN PREPARED USING STANDARD ENGINEERING SCALES. REDUCED SIZED PLANS WILL NOT CONFORM TO STANDARD SCALES. IN MAKING MEASUREMENTS ON REDUCED PLANS, THE ABOVE SCALES MAY BE USED.

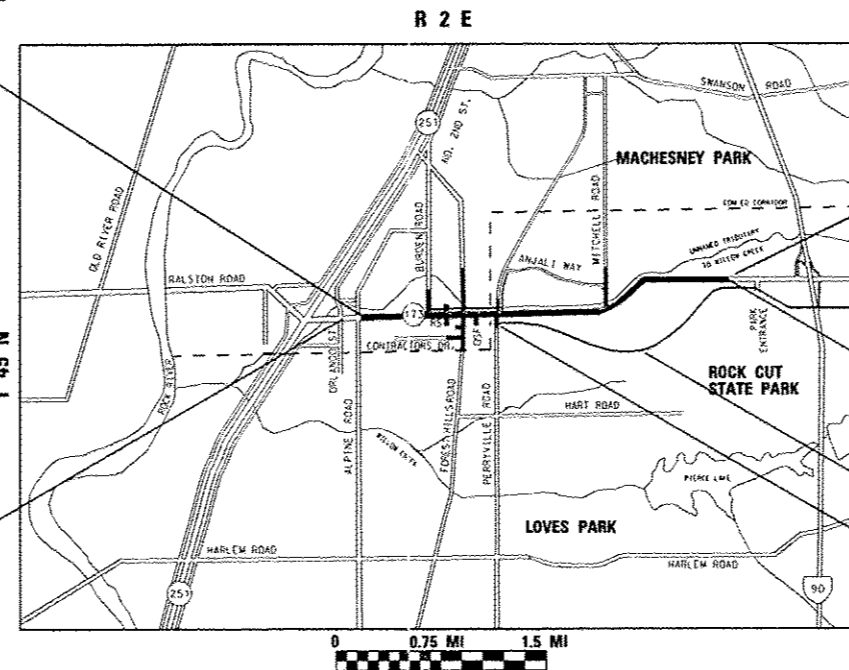
J.U.L.I.E.
JOINT UTILITY LOCATION INFORMATION FOR EXCAVATION
1-800-892-0123 OR 811

PROJECT ENGINEER MASOOD AHMED 815-284-5510
PROJECT MANAGER MATTHEW FARMER 815-284-5938
CONSULTANT CONTACT MARTIN J. SILVESTER 224-535-8081

CONTRACT NO. 64988
SECTION 14, 15, 20, 21, 22, 23 HARLEM TOWNSHIP
FAP 303 (IL 173) SECTION 129R WINNEBAGO

PROJECT BEGINS
STA 1022 + 20.19

IMPROVEMENT BEGINS
STA 1003 + 67



GROSS LENGTH = 12980 FT. = 2.46 MILE
NET LENGTH = 12980 FT. = 2.46 MILE

IMPROVEMENT ENDS
STA 156 + 00

SHARED USE PATH ENDS
STA 589 + 74.04

PROJECT ENDS
STA 1142 + 88.00 W.B.
STA 1152 + 00.00 E.B.

NEW SHARED USE PATH

SHARED USE PATH BEGINS
STA 500 + 00

100% SUBMITTAL
MAY 2, 2013

STATE OF ILLINOIS
DEPARTMENT OF TRANSPORTATION
DIVISION OF HIGHWAYS
SUBMITTED May 13 20 13
[Signature]
DEPUTY DIRECTOR OF HIGHWAYS, REGION ENGINEER
June 28 20 13
John D. Baranzolli, PE
ENGINEER OF DESIGN AND ENVIRONMENT
June 28 20 13
Amer Osman, PE
DIRECTOR OF HIGHWAYS, CHIEF ENGINEER

PRINTED BY THE AUTHORITY
OF THE STATE OF ILLINOIS

Rev.