

**NORTH CURB LINE**

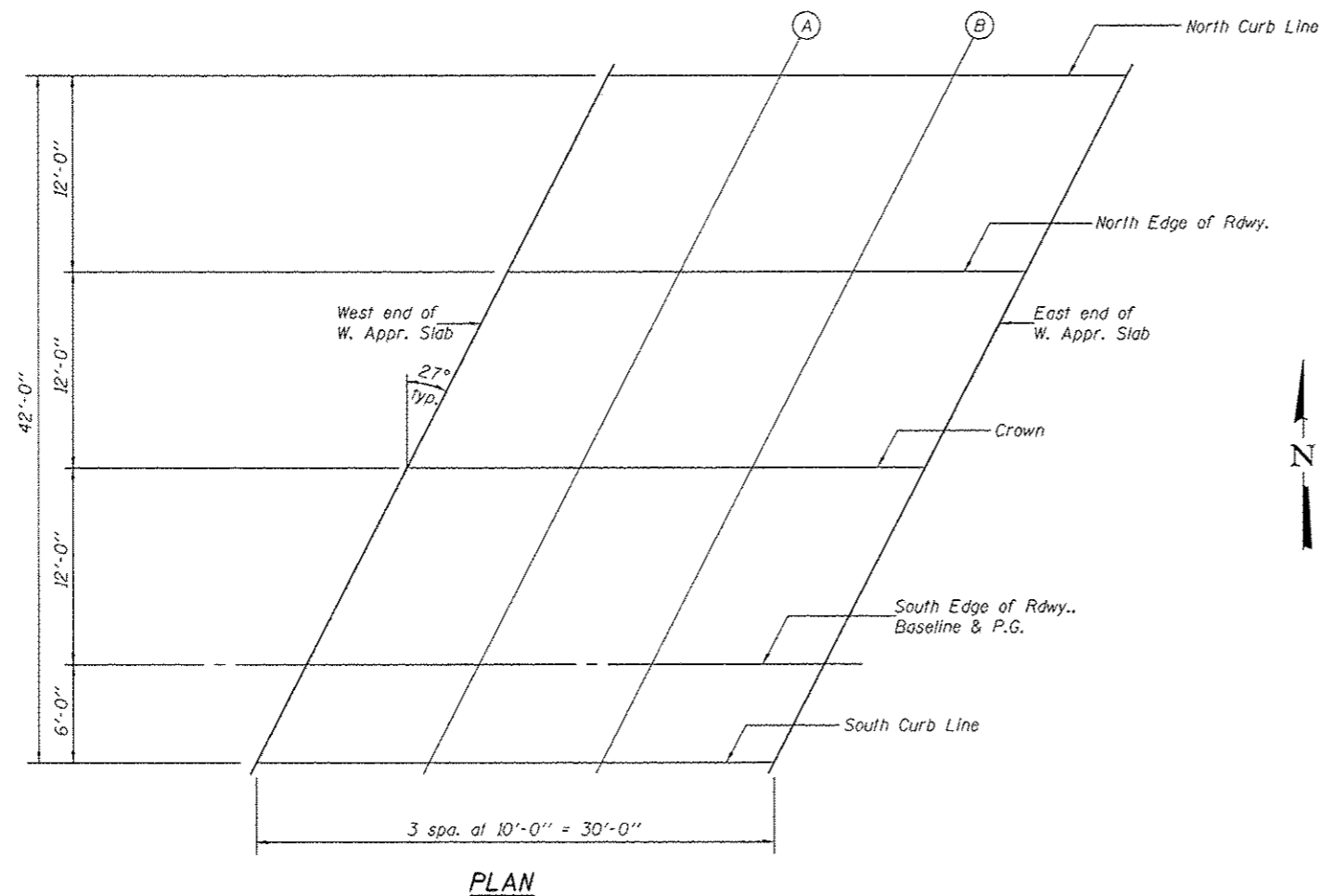
Location	Station	Offset	Theoretical Grade Elevations
West end of W. Appr. Slab	292041.58	-36.00	713.87
A	292051.58	-36.00	713.80
B	292061.58	-36.00	713.74
East end of W. Appr. Slab	292071.58	-36.00	713.67

**NORTH EDGE OF RDWY.**

Location	Station	Offset	Theoretical Grade Elevations
West end of W. Appr. Slab	292035.47	-24.00	714.15
A	292045.47	-24.00	714.09
B	292055.47	-24.00	714.02
East end of W. Appr. Slab	292065.47	-24.00	713.96

**CROWN**

Location	Station	Offset	Theoretical Grade Elevations
West end of W. Appr. Slab	292029.35	-12.00	714.38
A	292039.35	-12.00	714.32
B	292049.35	-12.00	714.25
East end of W. Appr. Slab	292059.35	-12.00	714.19



**SOUTH EDGE OF RDWY., BASELINE & P.G.**

Location	Station	Offset	Theoretical Grade Elevations
West end of W. Appr. Slab	292023.24	0.00	714.23
A	292033.24	0.00	714.17
B	292043.24	0.00	714.10
East end of W. Appr. Slab	292053.24	0.00	714.04

**SOUTH CURB LINE**

Location	Station	Offset	Theoretical Grade Elevations
West end of W. Appr. Slab	292020.18	6.00	714.13
A	292030.18	6.00	714.06
B	292040.18	6.00	714.00
East end of W. Appr. Slab	292050.18	6.00	713.93

DESIGNED - Nick R. Barnett  
 CHECKED - Al-Barrac R. Shebib  
 DRAWN - h.t. duong  
 CHECKED - NRB/GRA

EXAMINED *James F. [Signature]*  
 ACTING ENGINEER OF BRIDGE DESIGN  
 PASSED *[Signature]*  
 ACTING ENGINEER OF BRIDGES AND STRUCTURES

DATE - OCTOBER 4, 2013  
 REVISED  
 REVISED

STATE OF ILLINOIS  
 DEPARTMENT OF TRANSPORTATION

TOP OF WEST APPROACH SLAB ELEVATIONS (W.B.)  
 STRUCTURE NO. 101-0195 (E.B.) & 101-0196 (W.B.)

SHEET NO. 15 OF 55 SHEETS

F.A.P. RTE.	SECTION	COUNTY	TOTAL SHEETS	SHEET NO.
301	3BR & 3BR-1	WINNEBAGO	290	114

CONTRACT NO. 64D19  
 ILLINOIS FED. AID PROJECT