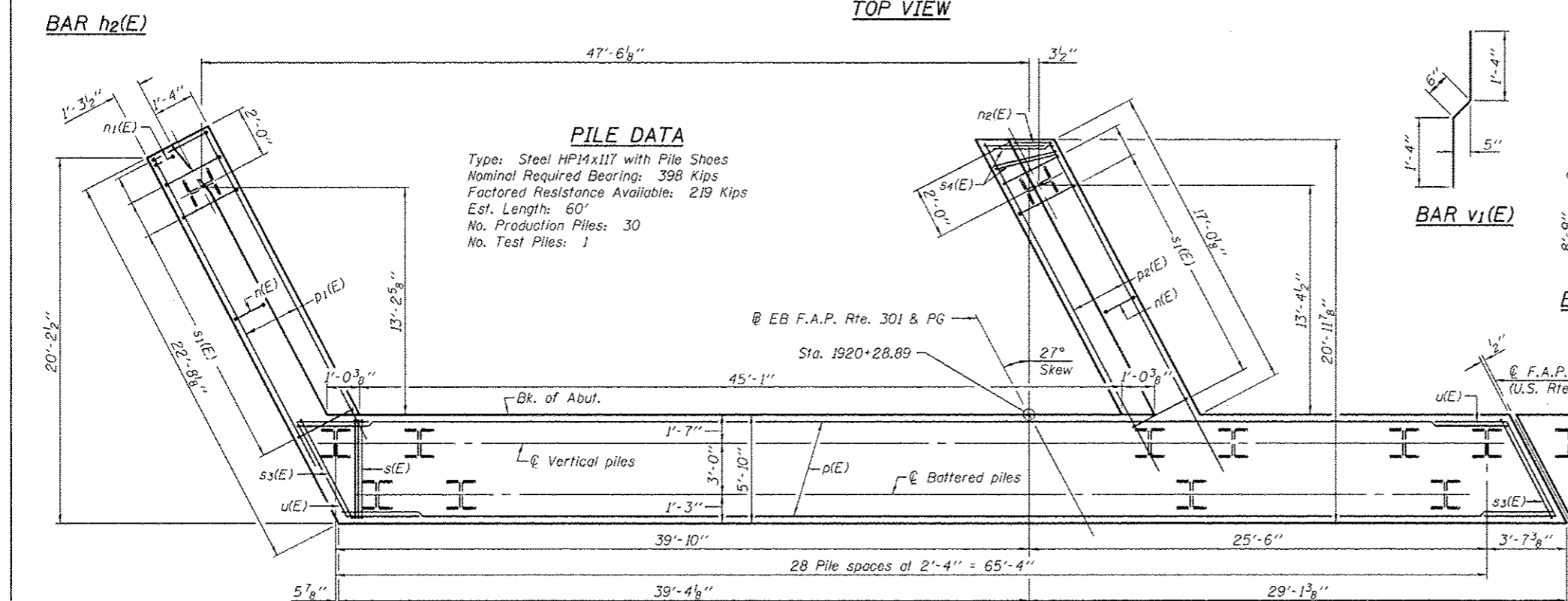
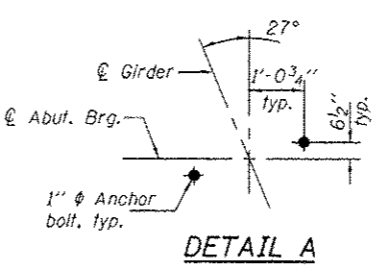


TOP VIEW

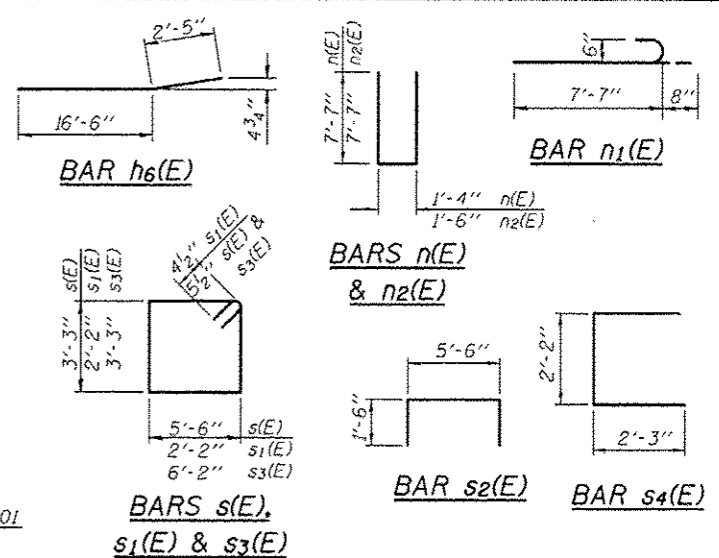


PLAN-PILE CAP

PILE DATA
 Type: Steel HP14x117 with Pile Shoes
 Nominal Required Bearing: 398 Kips
 Factored Resistance Available: 219 Kips
 Est. Length: 60'
 No. Production Piles: 30
 No. Test Piles: 1



DETAIL A



WEST ABUTMENT (E.B.)
 BILL OF MATERIAL

Bar	No.	Size	Length	Shape
h1(E)	18	#5	5'-11"	L
h2(E)	18	#5	5'-11"	L
h3(E)	14	#5	46'-10"	—
h4(E)	5	#6	46'-10"	—
h6(E)	11	#4	18'-11"	—
h7(E)	28	#4	18'-11"	—
h8(E)	5	#5	34'-1"	—
h9(E)	14	#4	18'-0"	—
h10(E)	3	#4	18'-9"	—
n(E)	35	#6	16'-6"	—
n1(E)	6	#6	8'-3"	—
n2(E)	1	#6	16'-8"	—
p(E)	24	#7	36'-7"	—
p1(E)	6	#7	20'-8"	—
p2(E)	6	#7	20'-0"	—
s(E)	84	#5	18'-5"	□
s1(E)	35	#4	9'-5"	□
s2(E)	35	#4	8'-6"	□
s3(E)	2	#5	19'-9"	□
s4(E)	4	#4	6'-8"	□
u(E)	8	#6	13'-9"	—
v(E)	48	#5	3'-10"	L
v1(E)	48	#4	3'-2"	—
v2(E)	48	#5	8'-10"	—
v3(E)	48	#5	10'-2"	—
v4(E)	3	#6	10'-10"	—
v5(E)	37	#6	11'-5"	—
v6(E)	39	#6	11'-2"	—
Structure Excavation			Cu. Yd.	165.2
Concrete Structures			Cu. Yd.	114.1
Reinforcement Bars, Epoxy Coated			Pound	10230
Furnishing Steel Piles, HP14x117			Foot	1800
Driving Piles			Foot	1800
Test Pile Steel, HP14x117			Each	1
Pile Shoes			Each	31
Concrete Encasement			Cu. Yd.	16.9
Concrete Sealer			Sq. Ft.	1005.5
Anchor Bolts, 1"			Each	12

*This pile shall be driven during Stage I Construction to avoid conflict during Stage II Construction. For location, see sheet 37 of 55. The Temp. Soil Retention System in the vicinity of this pile shall be modified to accommodate its driving.

For details of bar splicers, see sheet 49 of 55. For details of piles & concrete encasement, see sheet 47 of 55.

DESIGNED - NICHOLAS R. BARNETT	EXAMINED - <i>James F. [Signature]</i>	DATE - OCTOBER 4, 2013
CHECKED - AL-BARRAE R. SHEDID	ACTING ENGINEER OF BRIDGE DESIGN	
DRAWN - H.T. DUONG / M.B.M.	PASSED - <i>[Signature]</i>	REVISED
CHECKED - NRB/GRA	ACTING ENGINEER OF BRIDGES AND STRUCTURES	REVISED

STATE OF ILLINOIS
 DEPARTMENT OF TRANSPORTATION

WEST ABUTMENT (E.B.) - STAGE I CONSTRUCTION
 STRUCTURE NO. 101-0195 (E.B.) & 101-0196 (W.B.)

F.A.P. RTE.	SECTION	COUNTY	TOTAL SHEETS	SHEET NO.
301	3BR & 3PR-1	WINNEBAGO	290	130
				CONTRACT NO. 64D19
ILLINOIS FED. AID PROJECT				