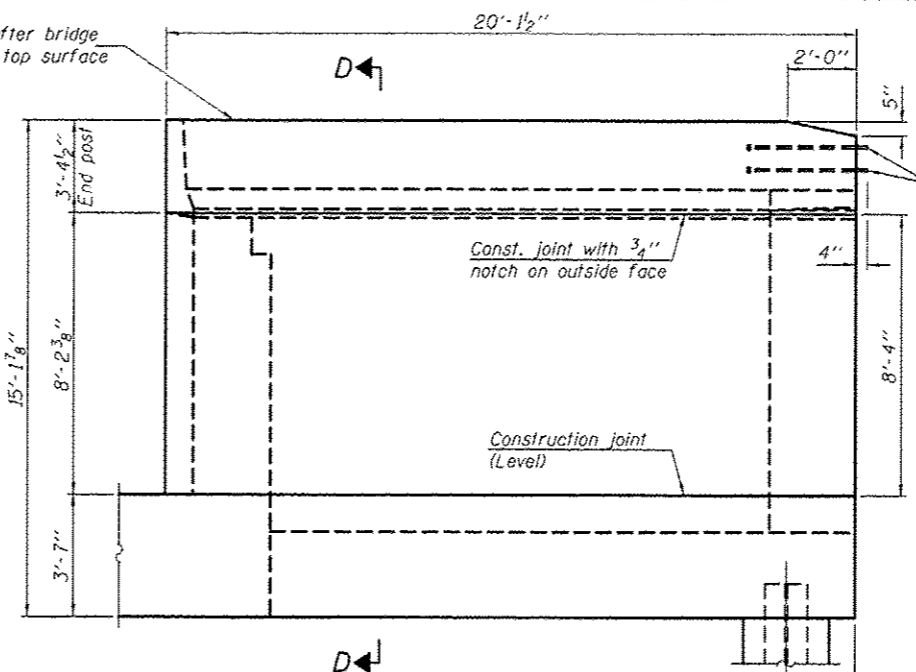
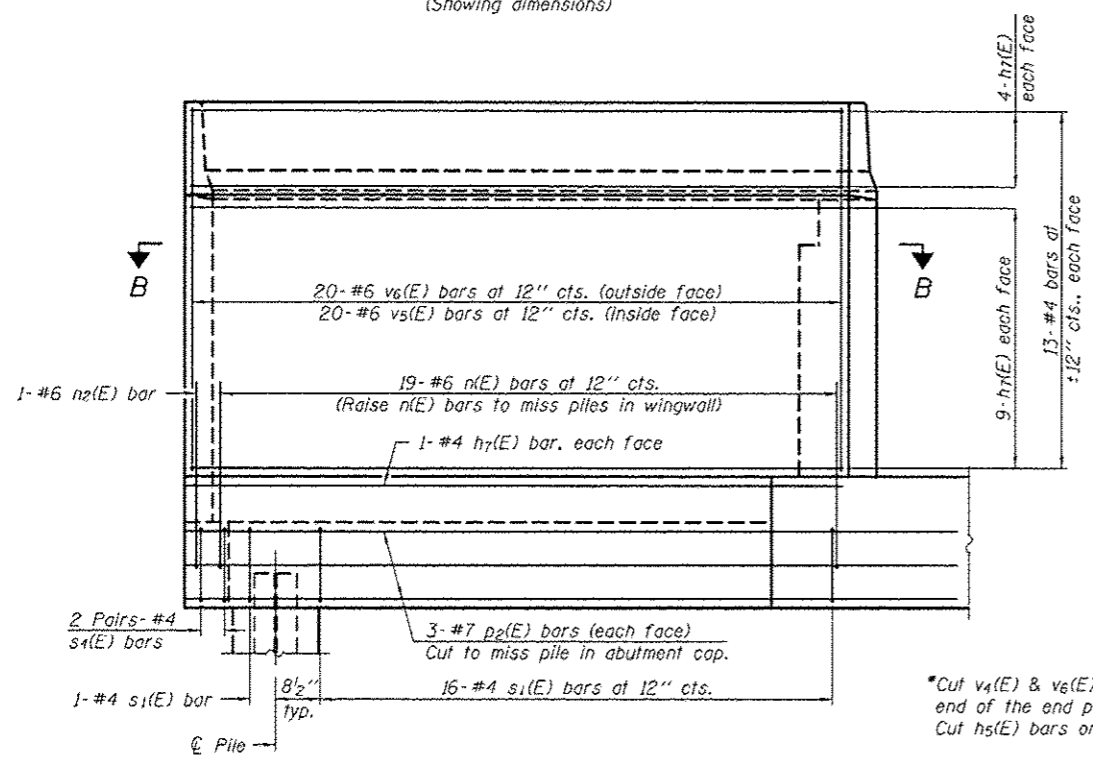
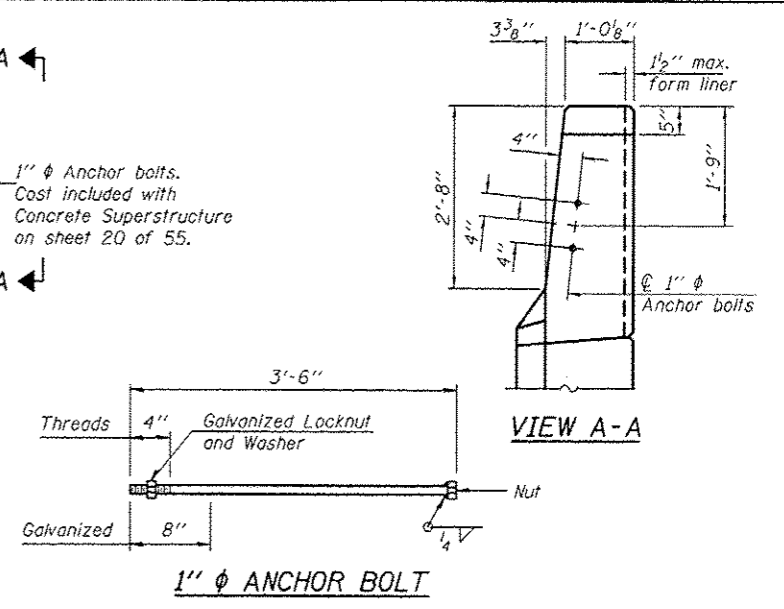


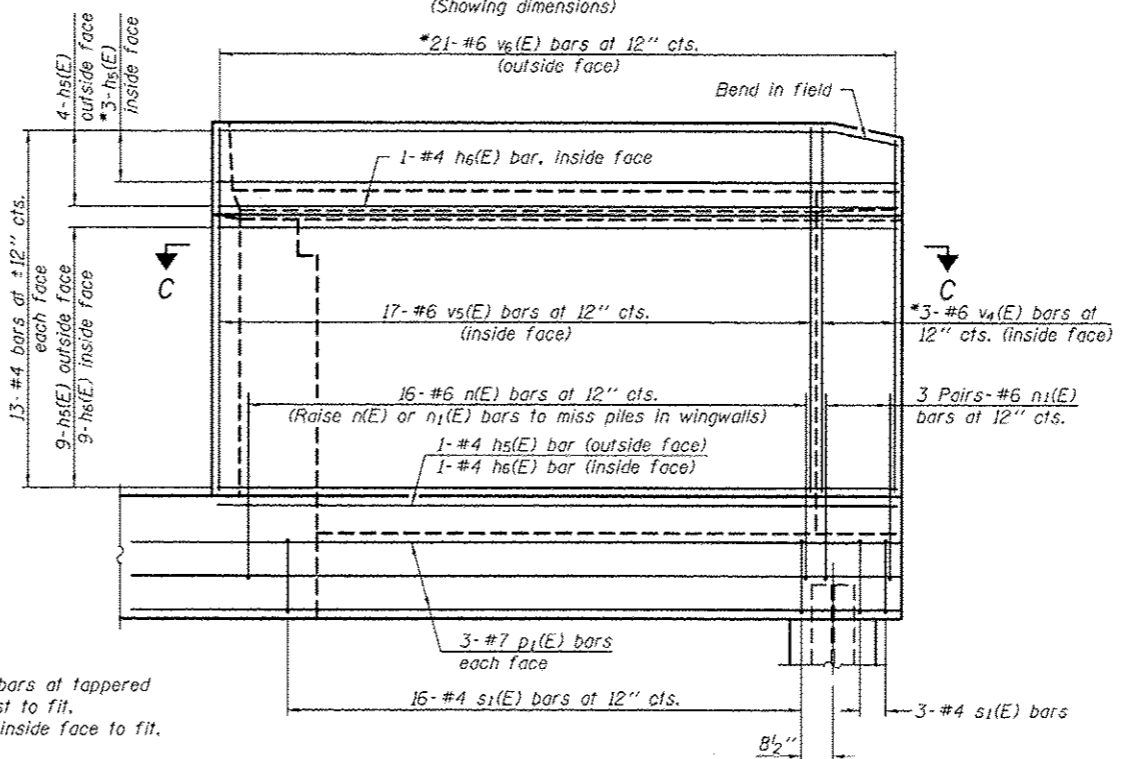
SOUTH WINGWALL ELEVATION
 (Showing dimensions)



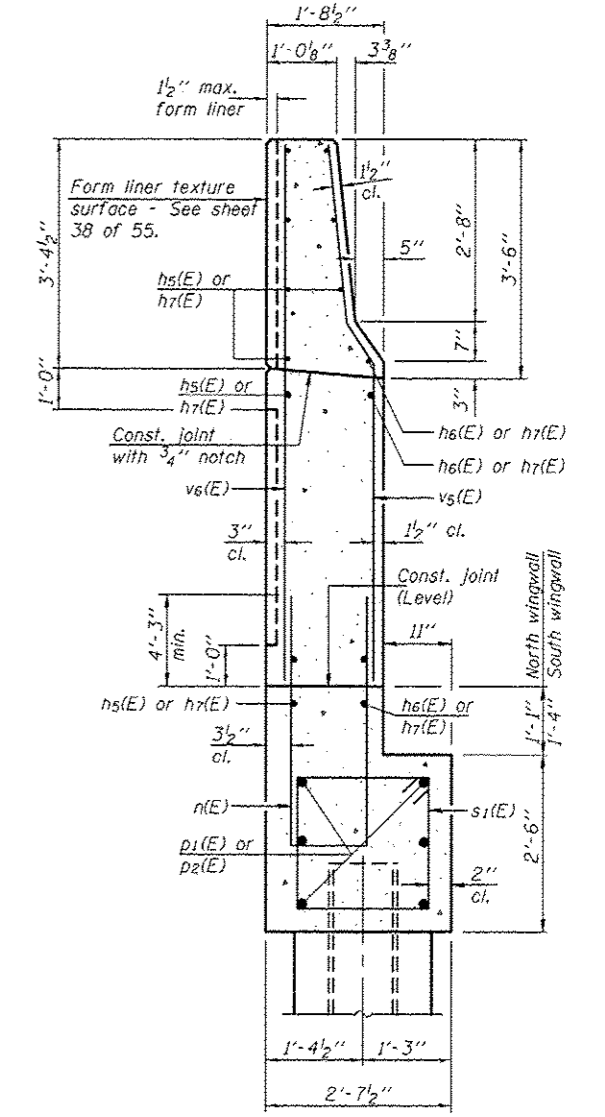
NORTH WINGWALL ELEVATION
 (Showing dimensions)



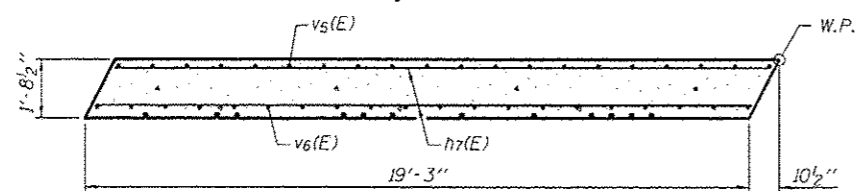
SOUTH WINGWALL ELEVATION
 (Showing reinforcement)



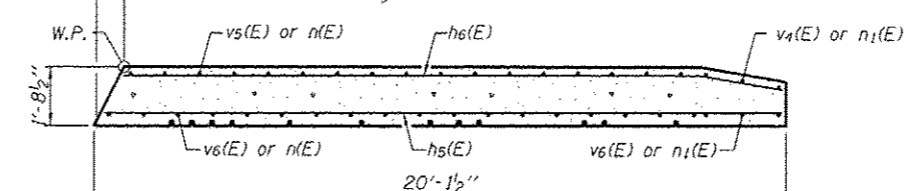
NORTH WINGWALL ELEVATION
 (Showing reinforcement)



SECTION D-D



SECTION B-B



SECTION C-C

*Cut v4(E) & v5(E) bars at tapered end of the end post to fit. Cut h5(E) bars on inside face to fit.

DESIGNED - NICHOLAS R. BARNETT	EXAMINED - <i>James F. [Signature]</i>	DATE - OCTOBER 4, 2013	STATE OF ILLINOIS DEPARTMENT OF TRANSPORTATION		WEST ABUTMENT DETAILS (W.B.) - STAGE II CONSTRUCTION STRUCTURE NO. 101-0195 (E.B.) & 101-0196 (W.B.)		F.A.P. RTE. 301	SECTION 3BR & 3BR-1	COUNTY WINNEBAGO	TOTAL SHEETS 290	SHEET NO. 138
CHECKED - AL-BARRAE R. SHEDIB	ACTING ENGINEER OF BRIDGE DESIGN	REVISED					CONTRACT NO. 64D19		ILLINOIS FED. AID PROJECT		
DRAWN - MICHAEL B. MOSSMAN	PASSED - <i>[Signature]</i>	REVISED	SHEET NO. 39 OF 55 SHEETS								
CHECKED - NRB/GRA	ACTING ENGINEER OF BRIDGES AND STRUCTURES	REVISED									